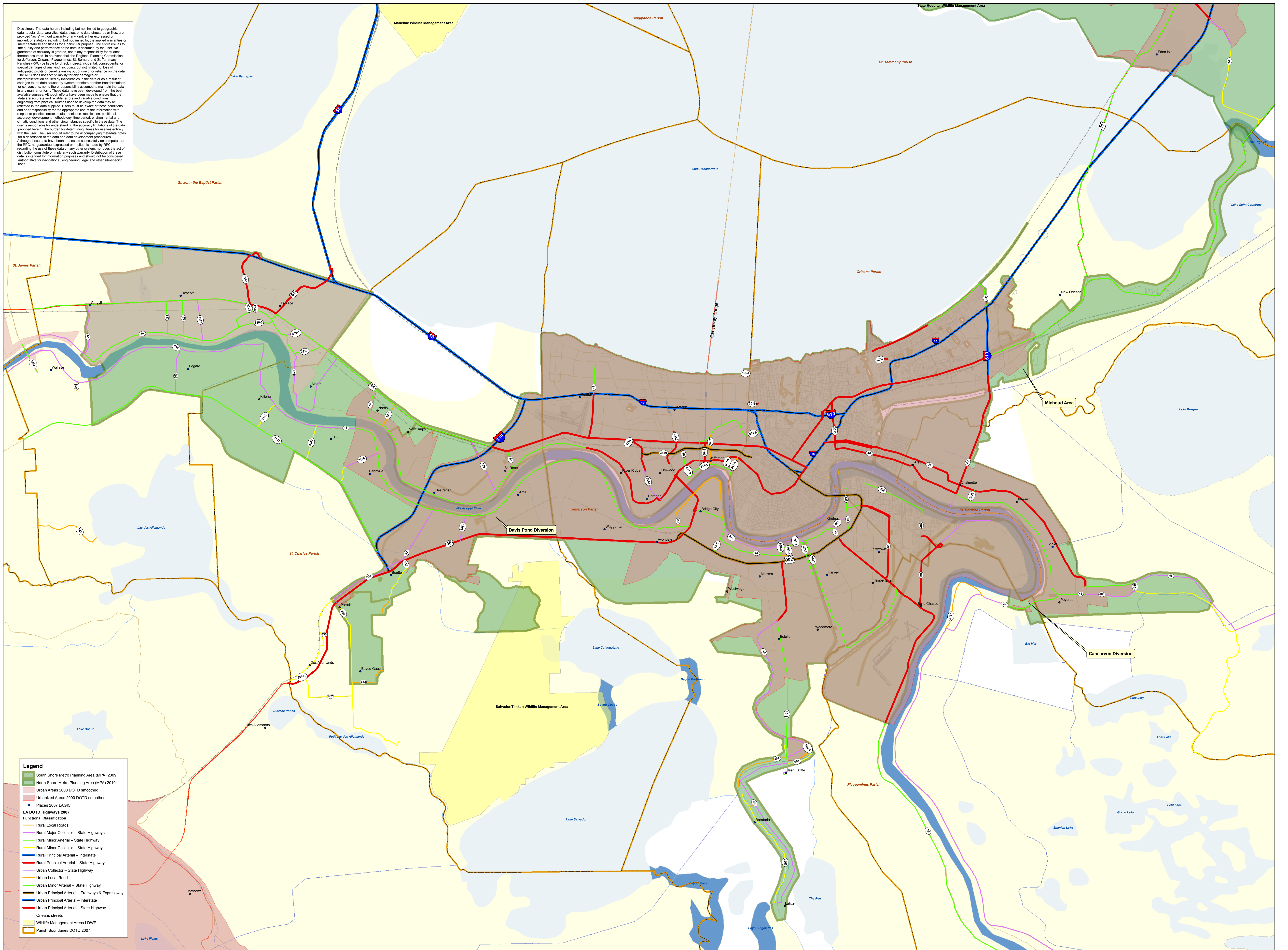


Disclaimer: The data herein, including but not limited to geographic data, tabular data, analytical data, electronic data structures or files, are provided "as is" without warranty of any kind, either expressed or implied, or statutory, including, but not limited to, the implied warranties or merchantability and fitness for a particular purpose. The entire risk as to the quality and performance of the data is assumed by the user. No guarantee of accuracy is granted, nor is any responsibility for reliance thereon assumed. In no event shall the Regional Planning Commission for Jefferson, Orleans, Plaquemines, St. Bernard and St. Tammany Parishes (RPC) be liable for direct, indirect, incidental, consequential or special damages of any kind including, but not limited to, loss of anticipated profits or benefits arising out of use of or reliance on the data. The RPC does not accept liability for any changes or misrepresentation caused by inaccuracies in the data or as a result of changes to the data caused by system transfers or other transformations or conversions, nor is there responsibility assumed to maintain the data in any manner or form. These data have been developed from the best available sources. Although efforts have been made to ensure that the data are accurate and reliable, errors and variable conditions originating from physical sources used to develop the data may be reflected in the data supplied. Users must be aware of these conditions and bear responsibility for the appropriate use of the information with respect to possible errors, scale, resolution, verification, positional accuracy, development methodology, time period, environmental and climatic conditions and other circumstances specific to these data. The user is responsible for understanding the accuracy limitations of the data provided herein. The sources for determining fitness for use lies entirely with the user. The user should refer to the accompanying metadata notes for a description of the data and data development procedures. Although these data have been processed successfully on computers at the RPC, no guarantee, expressed or implied, is made by the RPC regarding the use of these data on any other system. For those the act of using these data constitutes or imply any such warranty. Distribution of these data is intended for informational purposes and should not be considered authoritative for navigational, engineering, legal and other site-specific uses.



**Legend**

- South Shore Metro Planning Area (MPA) 2009
- North Shore Metro Planning Area (MPA) 2010
- Urban Areas 2000 DOTD smoothed
- Urbanized Areas 2000 DOTD smoothed
- Places 2007 LAGIC

**LA DOTD Highways 2007**

**Functional Classification**

- Rural Local Roads
- Rural Major Collector - State Highway
- Rural Minor Arterial - State Highway
- Rural Minor Collector - State Highway
- Rural Principal Arterial - Interstate
- Rural Principal Arterial - State Highway
- Urban Collector - State Highway
- Urban Local Road
- Urban Minor Arterial - State Highway
- Urban Principal Arterial - Freeways & Expressway
- Urban Principal Arterial - Interstate
- Urban Principal Arterial - State Highway
- Orleans streets
- Wildlife Management Areas LDWF
- Parish Boundaries DOTD 2007

N

0 0.5 1 2 Miles



# New Orleans Metropolitan Planning Area, Louisiana with Urbanized Area & Highway Functional Classification

August 2009

Louisiana Department of Transportation  
and Development

---

Regional Planning Commission for Jefferson, Orleans,  
Plaquemines, St. Bernard and St. Tammany Parishes