

**D  
R  
A  
F  
T**

# **Transportation Improvement Program St. Tammany Urbanized Areas**

**Fiscal Years 2012-16**



## **Regional Planning Commission**

10 Veterans Memorial Boulevard  
New Orleans, Louisiana 70124

504-483-8500 (phone)

504-483-8526 (fax)

email: [rpc@norpc.org](mailto:rpc@norpc.org)

Web Site: [www.norpc.org](http://www.norpc.org)

January 10, 2012

# CONTENTS

	<b>PAGE</b>
Record of Adoption .....	1
Introduction and TIP Development Process .....	2
Maps of MPO Area .....	6
Highway Projects Let in Previous Fiscal Year .....	8
TAC Members.....	9
Certification .....	15
Glossary.....	16
<b>Highway Projects</b>	
FFY-11 (10/1/10 - 9/30/11) .....	18
FFY-12 (10/1/11 - 9/30/12) .....	19
FFY-13 (10/1/12 – 9/30/13).....	27
FFY-14 (10/1/13 – 9/30/14).....	35
FFY-15 (10/1/14 – 9/30/15) .....	39
FFY-16 (10/1/15 – 9/30/16).....	41
Post FFY16 .....	42

**Record of Adoption**  
**Transportation Improvement Program**  
**St. Tammany Urbanized Areas**  
**FY12 – FY16**

<b>No.</b>	<b>Resolution No.</b>	<b>Date</b>	<b>Description of Change</b>
1		1/10/12	Draft - Presented to Commission for review.

# TRANSPORTATION IMPROVEMENT PROGRAM ST. TAMMANY PARISH

---

## FY12 – FY16

### **INTRODUCTION**

In accordance with the Safe, Accountable, Flexible, Efficient, *Transportation Equity Act, A Legacy for Users (SAFETEA-LU)*, the successor legislation of the Transportation Equity Act for the 21<sup>st</sup> Century (TEA-21), the Transportation Improvement Program is prepared biannually for St. Tammany Parish by the Regional Planning Commission in cooperation with the Louisiana Department of Transportation and Development and affected transit providers.

The Transportation Improvement Program (TIP) consists of a priority list of projects and project segments that are being advanced towards implementation over the next one to four years. In addition to the four-year element (FY 12- 16), there is a future Multi-Year Element that lists longer range improvements which are in the planning and development stage and which are expected to advance towards implementation based on funding availability.

### **RELATIONSHIP TO THE METROPOLITAN TRANSPORTATION PLAN**

Projects contained in the TIP are derived from Phase I of the Metropolitan Transportation Plan. Projects are largely oriented toward maintaining a State of good repair, consisting of roadway rehabilitation, overlay, and traffic signalization, all pursuant to the eight planning factors promulgated under the Safe, Accountable, Flexible, Efficient Transportation Equity Act. A Legacy for Users (SAFETEA-LU). Bus transit service is promulgated. Projects identified in the TIP are part of the approved Transportation Plan referenced in Title I and Title III of SAFETEA-LU. This effort represents the best effort of the region to implement the provisions of SAFETEA-LU, and toward full compliance with provisions thereto.

Projects shown in the TIP for advancement were fully discussed with the RPC Technical Advisory Committee members and the Louisiana Department of Transportation and Development prior to placement in the TIP. Only projects that were mutually agreed upon with DOTD as to overall merit and funding availability were selected for TIP and State TIP inclusion.

Projects identified for federal funding in the TIP document are part of the long range plan and refer to improvements being funded under Title I and Title III of the SAFETEA-LU.

### **US DOT KEY PRIORITY AREAS**

In addition to the eight planning factors described in SAFETEA-LU, the St. Tammany TIP reflects review and implementation of the five key priority areas promulgated by USDOT for MPO and other stakeholders to consider for project development. These include:

Safety

Livable Communities

State of Good Repair

Economic Competitiveness

Environmental Sustainability

To address these areas, the projects listed in the tabular portion of the TIP include a heading indicating “DOT Priority Area.” In this section, the primary priority area or areas are listed. This allows the reader to quickly and easily ascertain what the primary priority area that particular project addresses.

### **GEOGRAPHIC AREA OF COVERAGE: TRANSPORTATION IMPROVEMENT PLAN**

At this writing, St. Tammany Parish contains two urbanized areas with populations of under 200,000 persons, the Slidell, -East St. Tammany urbanized area and the Mandeville-Covington urbanized area. **Figures 1 and 2** show each urbanized area, as well as the planning area for the 20 year planning horizon, as described in federal law. It is important to note that the urbanized areas were, in the year 2000, approximately 2.5 miles away from being contiguous (as determined from population density criteria developed by the US Census and confirmed via by aerial photography ), and that the planning horizon boundaries are co-terminus. Given past trends and post-Hurricane Katrina development in St. Tammany (see discussion below), RPC believes these areas will be contiguous by the 2010 census.

### **AIR QUALITY STATUS**

As of March 2010, St. Tammany Parish is an air quality attainment area, as is the adjacent New Orleans urbanized area. St. Tammany Parish is undertaking several initiatives to reduce vehicle miles traveled and enhance the overall quality of life. Among these are bike trails, park and ride lots, vanpooling, and planning efforts to enhance commuter and local public transportation ridership. Additionally, St. Tammany Parish is implementing a sweeping comprehensive land use planning and coordination effort that will establish a basis for rational and sustainable development patterns throughout the parish.

### **FINANCIAL CONSTRAINT**

Both the TIP and the Metropolitan Transportation Plan have been financially constrained to reflect realistic and available levels of project funding. A review of the State’s proposed construction program was carried out jointly by RPC and LaDOTD. This effort resulted in the selection of a small number of project priorities that were in a position to go forward and for which funding reasonably could be expected to be available.

Other methods were also employed to establish financial constraint. This consisted of a review of the actual letting list of projects over the last ten years to establish a history of federal and state funding by project category. Since Interstate funding is no longer available for new construction, this category was eliminated from future funding consideration. An average estimated amount of both federal and non-federal financial resources was thereby derived and used as a benchmark in the prioritization process. The State has also earmarked for programming purposes approximately \$5,000,000 a year of Surface Transportation Program (STP) funds apportioned by the federal government for disbursement to urbanized areas with a population under 200,000 persons, or “under 200 K funds” to St. Tammany Parish. These funds plus 20% were used to assist in establishing a priority program as developed by the RPC in consultation with the parish, the public, and LaDOTD.

### **HURRICANE KATRINA**

#### **Impacts to the Parish and Region**

On or about August 29, 2005, St. Tammany Parish, as well as other parishes in the New Orleans area and counties on the Mississippi Gulf Coast was struck by Hurricane Katrina. Storm surges of over 25 feet and winds in excess of 130 miles per hour proved devastating to the region. The eastern areas

of St. Tammany Parish, particularly the City of Slidell and the community of Northshore, were devastated, having taken a direct hit from the land-falling storm. Moreover, the hurricane protection system in place on the southshore of Lake Pontchartrain, particularly in Orleans and St. Bernard Parishes, suffered catastrophic failure. The subsequent inundation of these areas forced the relocation of **hundreds of thousands** of residents, and has had far-reaching impacts across the nation. The hurricane has proven not only to be the costliest, but the scale of devastation is unprecedented in the American experience. Many of these displaced residents have resettled in other, less impacted areas of St. Tammany and have chosen to stay permanently.

### **Impacts to Fiscal Constraint**

Significant amounts of federal resources have been deployed to the region to assist in the recovery effort. Billions of dollars in recovery aid have been appropriated by Congress at the recommendation of the President. As a result, projects that have long been recognized by the community as needed but unfunded for a variety of reasons may now be undertaken with a renewed sense of urgency and purpose through the use of disaster and hazard mitigation-related sources, pending receipt and expenditure of recovery dollars as intended by Congress.

At the same time, the massive reconstruction effort brought with it shortages in construction materials and labor. Bid prices for construction projects rose in the immediate aftermath of the storm. Prices have fallen precipitously as much of the reconstruction is being finished, and an overall moribund national economy puts competing construction efforts on hold. Price increases and decreases have had an impact to fiscal constraint, and care has been taken to reassess construction costs given the best data available.

Additionally, prior to Hurricane Katrina, St. Tammany Parish had embarked upon an ambitious plan of infrastructure improvements identified in their *Infrastructure 2010 Plan*. The *Infrastructure Plan*, in turn, resulted from the *New Directions 2025 Plan*, a comprehensive planning process that was initiated with the assistance of the Regional Planning Commission, through the use of FHWA Transportation and Community and System Preservation funding. The comprehensive planning effort, through sometimes hard-fought consensus building, has achieved a degree of sustainability unprecedented in the State of Louisiana. Impact fees for new, planned development are being assessed, and revenues generated are being reinvested in infrastructure. Projects identified in the *Infrastructure Plan* are included in the TIP to illustrate parish priorities, and to advise the reader of projects that may be incorporated into the formalized TIP/STIP process at a later date.

Numerous projects are being undertaken by the Parish on the state highway system by permit from LaDOTD District 62, with local funds generated by land development impact fees. The Parish is also undertaking “advanced construction” activities in coordination with LaDOTD, wherein the parish advances the dollars necessary to undertake roadway improvements on the state highway network, to be reimbursed by LaDOTD when federal funds become available. These types of projects and the schedule for reimbursement are included in the TIP.

### **NON-MOTORIZED TRANSPORTATION**

The Regional Planning Commission is committed to encouraging the use of non-motorized modes of transportation, such as bicycling and walking. RPC encourages the inclusion of bicycle and pedestrian facilities in reconstruction, resurfacing, and capacity increase projects, to the extent deemed safe and feasible. To this end, RPC has been proactive in implementing planning and construction efforts aimed at providing a safe and enjoyable environment for non-motorized transportation activities. As a policy, RPC has and will continue to work with various stakeholders to implement these important projects.

## **PUBLIC INVOLVEMENT PLAN**

RPC recently updated the Public Involvement Plan in January 2010. As part of the plan, RPC has redoubled its efforts to solicit stakeholder involvement, making plans and documents accessible via the world wide web, and to solicit the participation of and establish a dialog with groups which have traditionally had limited involvement in regional planning activities.

Citizen participation has been encouraged throughout the formulation of the TIP and Transportation Plan. Public input has been sought in the development of the Plan through meetings with local officials business and civic leaders, transit providers, elderly and handicapped advocacy groups, minority business, and neighborhood organizations. The RPC has made use of local newspapers to inform citizens of important regional projects and to promote alternative transportation modes, including transit and vanpooling efforts.

The draft TIP can be viewed at RPC's website, [www.norpc.org](http://www.norpc.org). Copies of the Draft TIP will be placed at libraries throughout St. Tammany Parish. Prior to adoption of the TIP, a period is provided for citizen review, input and comment. The public is also afforded the opportunity to express their comments directly to the Transportation Policy Committee on the TIP document prior to official action.

Citizens, affected public agencies, private transportation providers, and other interested parties are invited to review and comment on the document. The draft edition of the TIP is scheduled for review by the Planning Commission on January 10, 2012, with final endorsement after receipt of public comments on February 14, 2012.

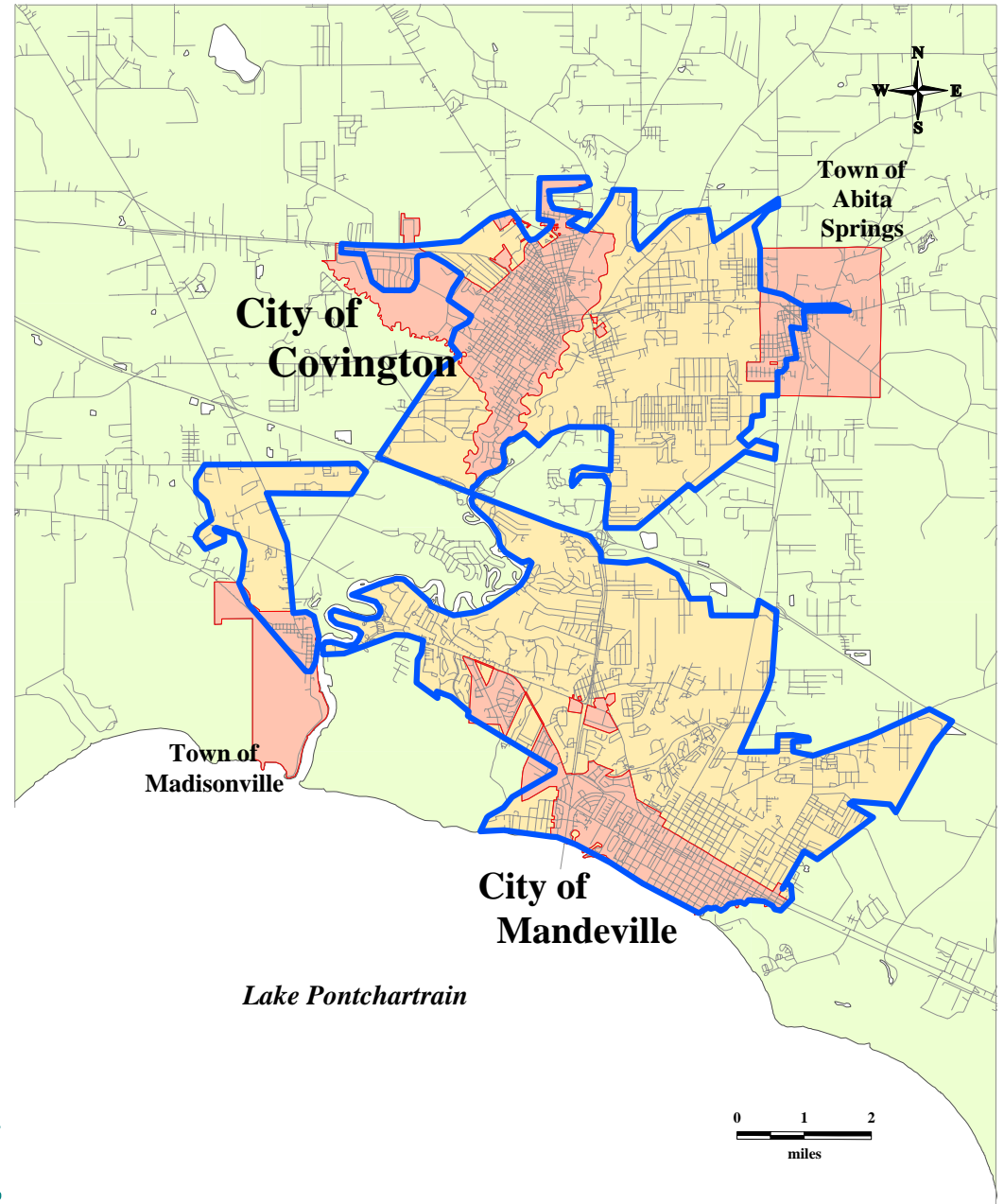
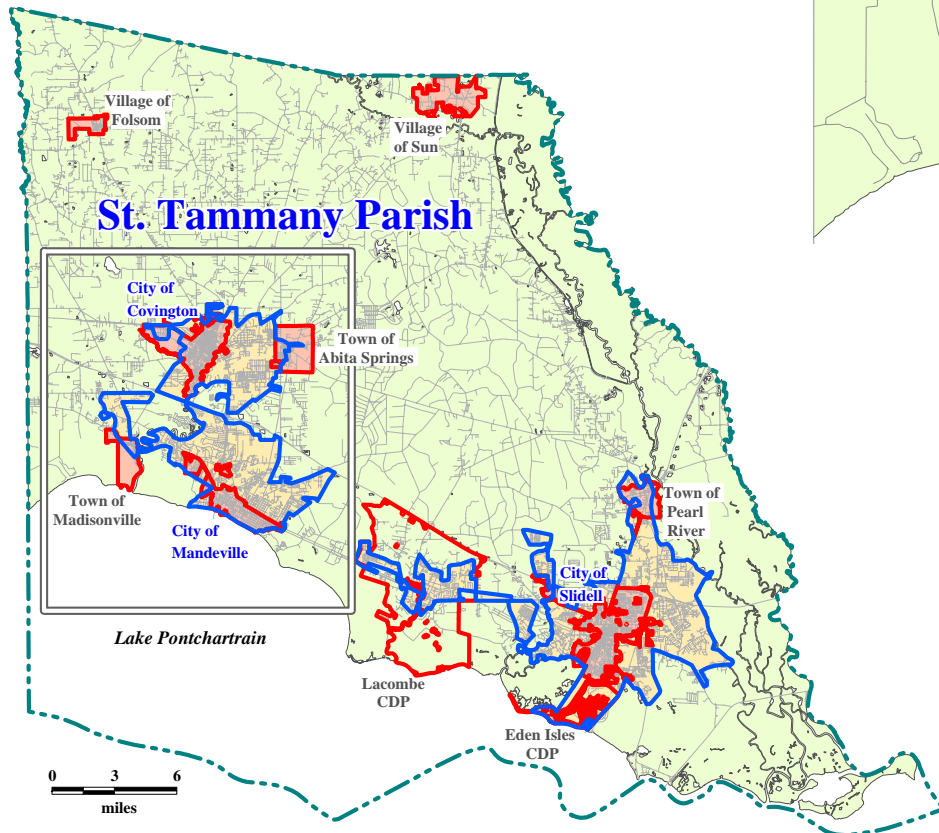
Comments and questions should be directed to the attention of:

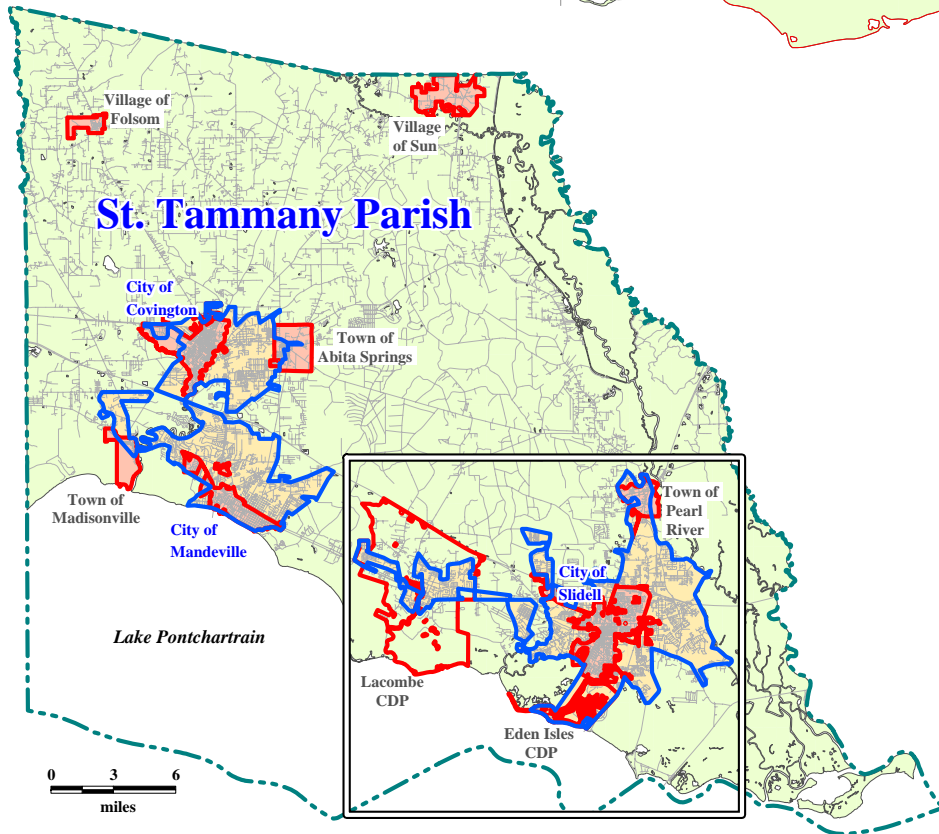
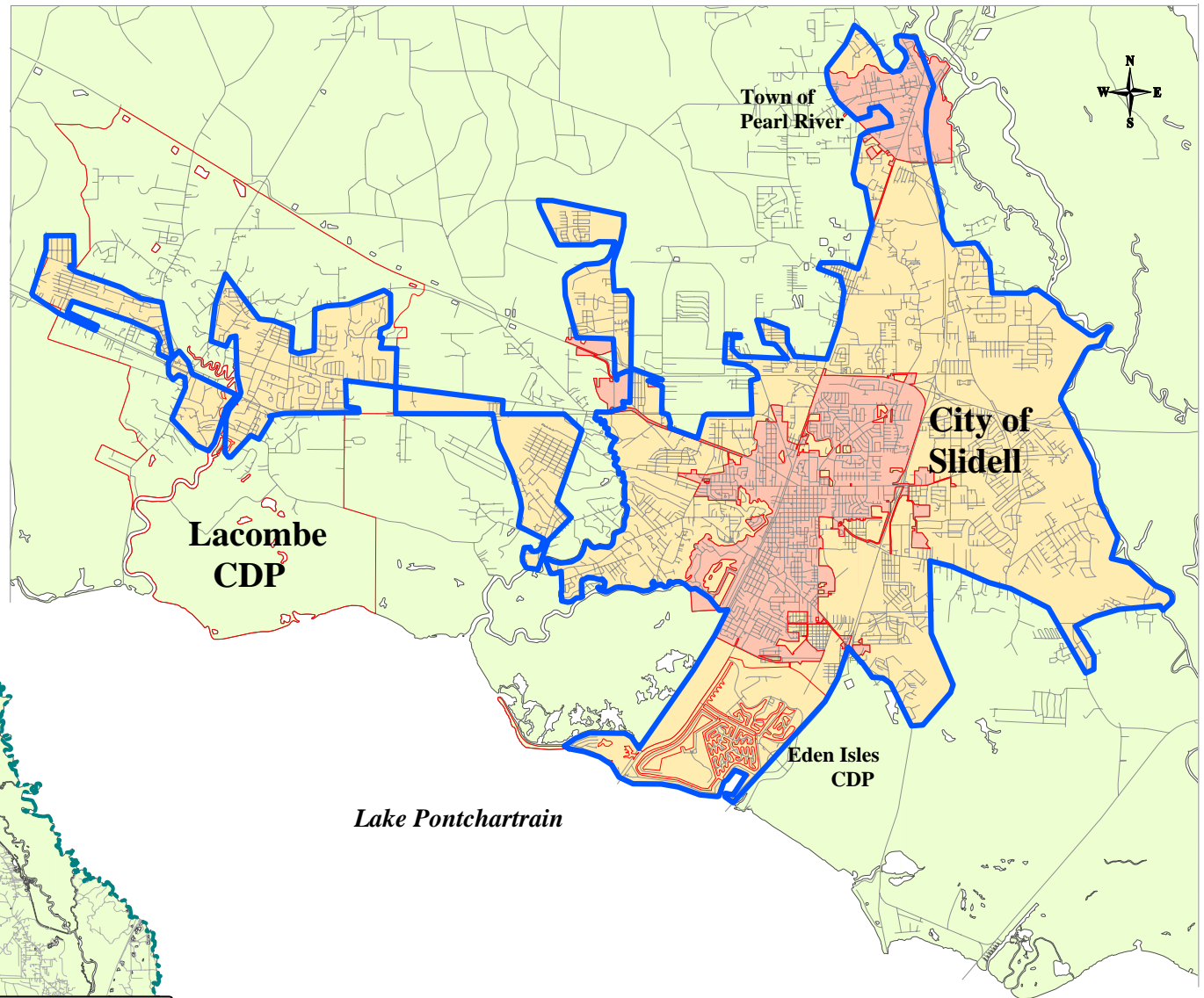
Mr. Walter Brooks  
Executive Director  
Regional Planning Commission  
10 Veterans Memorial Blvd.  
New Orleans, LA 70124  
Telephone: 504-483-8500  
Fax: 504-483-8526  
E-mail: [rpc@norpc.org](mailto:rpc@norpc.org)



# Boundary of the Covington/Mandeville Urbanized Area of St. Tammany Parish

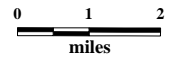
Prepared by the Regional Planning Commission for  
Jefferson, Orleans, Plaquemines, St. Bernard  
and St. Tammany Parishes





Lake Pontchartrain

# Boundary of the Slidell Urbanized Area of St. Tammany Parish



Prepared by the Regional Planning Commission for Jefferson, Orleans, Plaquemines, St. Bernard and St. Tammany Parishes



Project No.	Route & Description	Improvement Type	Funding Source	Let Date	Cost	
737-52-0007	Pearl River Signing & Marking PR	Install Signing & Pavement Markings	LRSP	Jun-10	13,926	
281-04-0027	LA 435 (LA 36 - Double Creek Bridge)	Cold Plane, Base, Drainage & Overlay	HRRR	Aug-10	2,617,240	
454-04-0070	I-12 (US 11 - LA 1091)	Noise Barrier Replacement	DEMO, St. Gen.	Aug-10	1,993,709	
742-52-0012	I-10 SW Service Rd. Extension	New 2 Lane Enhancement/Construct	ARRA, DEMO, STP<200K	Aug-10	2,989,156	
744-52-0028	Tammany Trace Lacombe Trailhead	Bldg.	STP ENH	Aug-10	255,657	
<b>Fiscal Year 2010</b>					<b>25,177,578</b>	
H.003449	454-04-0080	I-12 (Airport Rd. to I-59/I-12/I-10)	Widen 4 to 6 Lanes	St. Gen.	Oct-10	25,664,489
744-52-0038	Pineview Sidewalks Ext.	Sidewalks/Pedestrian Amenities	STP ENH	Oct-10	191,392	
H.003102	450-18-0095	I-10 at Oak Harbor	Landscaping	STP ENH	Nov-10	203,895
H.003109	450-18-0115	N.E. Frontage Road at US 190B	Right Turn Lane	NHS	Jan-11	69,892
269-08-0019	LA 40 (W. LA 437 to E. LA 437)	Microsurfacing	STP FLEX	Feb-11	293,332	
H.000503	013-12-0056	US 190 Tammany Trace Ext. to Pelican Park	Grading, Concrete Pavement	STP ENH	Apr-11	356,482
281-04-0028	LA 435 (LA 36 - Double Creek Bridge)	Overlay & Drainage	HRRR	Apr-11	2,058,839	
H.007589	744-52-0040	Kensington to John Slidell Park, Multi-Use Park	Bike Path Connector	STP ENH	Apr-11	522,179
713-52-0104	Fitzgerald Church Road	Bridge Replacement	FBROFF	Jun-11	386,489	
<b>Fiscal Year 2011</b>					<b>29,746,989</b>	

## Regional Planning Commission

Jefferson, Orleans, Plaquemines, St. Bernard and St. Tammany Parishes

### Technical Advisory Committee

#### JEFFERSON PARISH

**Mr. Jay Hebert**

Director, Planning Department  
City of Kenner  
1801 Williams Blvd.  
Bldg/ C. 3<sup>rd</sup> Floor  
Kenner, LA 70062  
Phone: 504-468-7280  
Fax: 504-468-7587  
Email: jhebert@kenner.la.us

**Mr. Kazem Alikhani, PE**

Director, Public Works  
Jefferson Parish  
1221 Elmwood Park Blvd., Suite 1002  
Jefferson, LA 70123  
Phone: 504-736-6783  
Fax:  
Email: kalikhani@jeffparish.net

**Mr. Mark Drewes**

Director, Engineering Division  
Department of Public Works  
Jefferson Parish  
1221 Elmwood Park Blvd., Suite 802  
Jefferson, LA 70123  
Phone: 504-736-6512  
Fax: 504-736-6739  
Email: mdrewes@jeffparish.net

**Mr. Ed Durabb**

Director, Planning Department  
Jefferson Parish  
1221 Elmwood Park Blvd., Suite 601  
Jefferson, LA 70123  
Phone: 504-736-6320  
Fax: 504-736-6343  
Email: edurabb@jeffparish.net

**Mr. Jose Gonzalez**

Director, Public Works Dept.  
City of Kenner  
1610 Rev. Richard Wilson Dr.  
Kenner, LA 70062  
Phone: 504-468-7515, ext. 3321  
Fax: 504-466-5479  
Email: jgonzalez@kenner.la.us

**Mr. Ryan Brown**

Director, Transit Administration  
Jefferson Parish  
21 Westbank Expressway  
Gretna, LA 70053  
Phone: 504-364-3450  
Fax: 504-364-3453  
Email: RDBrown@jeffparish.net

**Ms. Stacey VanSickle**

GCR & Associates  
2021 Lakeshore Dr., Suite 500  
New Orleans, LA 70122  
Phone: 504-304-0727  
Fax: 504-302-2525  
Email: svansickle@gcrconsulting.com

#### ORLEANS PARISH

**Mr. Louis Haywood, P.E.**

Traffic Division  
City of New Orleans  
Department of Public Works  
1300 Perdido St., Rom 6W03  
New Orleans, LA 70112  
Phone: 504-658-8040  
Fax: 504-658-8007  
Email: lhaywood@nola.gov

**Mr. Mark Jernigan**

Director, Dept. of Public Works  
City of New Orleans  
1300 Perdido St., Room 6W03  
New Orleans, LA 70112  
Phone: 504-658-8000  
Fax: 504-658-8007  
Email: mdjernigan@nola.gov

**Mr. Nguyen Phan, PE**  
Acting Director, Dept. of Public Works  
City of New Orleans  
1300 Perdido St., Room 6W03  
New Orleans, LA 70112  
Phone: 504-658-8000  
Fax: 504-658-8007  
Email: nphan@nola.gov

**Ms. Yolanda Rodriguez**  
Director  
New Orleans City Planning Commission  
1340 Perdido Street, Ninth Floor  
New Orleans, LA 70112  
Phone: 504-658-7000  
Fax: 504-658-7032  
Email: ywrodriguez@cityofno.com

**Ms. Leslie Alley**  
Deputy Director  
New Orleans City Planning Commission  
1340 Poydras Street, Ninth Floor  
New Orleans, LA 70112  
Phone: 504-658-7000  
Fax: 504-658-7032  
Email: lalley@cityofno.com

**Mr. Justin Augustine**  
Vice President  
Veolia Transportation Services, Inc.  
11219 Asphodel Dr.  
New Orleans, LA 70128  
Phone: 782-8339  
Email: justin.augustine@veoliatransportation.com

**Mr. Stefan Marks**  
Director of Planning  
Regional Transit Authority  
2817 Canal St.  
New Orleans, LA 70119  
Phone: 504-827-8307  
Fax: 504-827-8423  
Email: stefan.marks@veoliatransportation.com

#### PLAQUEMINES PARISH

**Mr. Byron Williams**  
Director, Public Service  
Parish President, Plaquemines Parish  
8056 Hwy. 23, Suite 309  
Belle Chasse, LA 70037  
Phone: 504-274-5560  
Fax: 504-274-5639  
Email: byron\_williams@plaqueminesparish.com

**Mr. Ken Dugas**  
Parish Engineer  
Plaquemines Parish  
102 Avenue G  
Belle Chasse, LA 70037  
Phone: 504-297-5343  
Fax: 504-297-5340  
Email: ken\_dugas@plaqueminesparish.com

**Mr. Robert Spears**  
GIS Manager  
Plaquemines Parish  
102 Avenue G  
Belle Chasse, LA 70037  
Phone: 504-297-5343  
Email: robert\_spears@plaqueminesparish.com

**Mr. Mike Metcalf**  
Permits, Planning and Zoning  
Plaquemines Parish  
102 Avenue G  
Belle Chasse, LA 70037  
Phone: 504-297-5344  
Email: mike\_metcalf@plaqueminesparish.com

#### ST. BERNARD PARISH

**Mr. Lonnie Campbell**  
Transit Manager  
St. Bernard Transit  
8201 West Judge Perez Drive  
Chalmette, LA 70043  
Phone: 504-277-1907  
Email: lcampbell@sbsp.net

**Ms. Mary Chimento**  
Interim Director, Dept. of Community Dev.  
8201 West Judge Perez Drive  
Chalmette, LA 70043  
Phone: 504-278-4299  
Email: mchimento@sbsp.net

**Mr. Ken Odinet**  
Director, Department of Public Works  
St. Bernard Parish  
1125 E. St. Bernard Hwy.  
Chalmette, LA 70043  
Phone: 504-278-4317  
Fax: 504-278-4480  
Email: kodinet@sbsp.net

**Mr. Louis Pomes**

Asst. Director  
Department of Public Works  
St. Bernard Parish  
1125 E. St. Bernard Hwy.  
Chalmette, LA 70043  
Phone: 504-278-4317  
Fax: 504-278-4480  
Email: lpomes@sbsp.gov

**ST. TAMMANY PARISH**

**Ms. Nahketah Bagby**

Director of Planning  
City of Covington  
317 N. Jefferson Ave.  
Covington, LA 70433  
Phone: 985-898-4725  
Fax: 985-898-4738  
Email: nbagby@covla.com

**Ms. Tara Ingram-Hunter**

Planning Director  
City of Slidell  
Post Office Box 828  
Slidell, LA 70459  
Phone: 985-646-4320  
Fax: 985-646-4356  
Email: tingram-hunter@cityofslidell.org

**Mr. David deGeneres**

Director, Public Works Department  
City of Mandeville  
1100 Mandeville High Blvd.  
Mandeville, LA 70448  
Phone: 985-624-3169  
Email: pwdirector@cityofmandeville.com

**Mr. Sidney Fontenot**

Director of Planning  
St. Tammany Parish  
Post Office Box 628  
Covington, LA 70434  
Phone: 985-898-2528  
Fax: 985-898-3003  
Email: sidf@stpgov.org

**Ms. Louissette L. Kidd**

Director  
Department of Planning & Development  
City of Mandeville  
3101 East Causeway Approach  
Mandeville, LA 70448  
Phone: 985-624-3101  
Fax: 985-626-7929  
Email: lkidd@cityofmandeville.com

**Mr. Carl Rebouche**

Director, Public Works Department  
City of Covington  
1300 W. 27<sup>th</sup> Avenue  
Covington, LA 70433  
Phone: 985-898-4710  
Fax: 985-898-4729  
Email: crebouche@covla.com

**Mr. William Oiler**

Chief Administrative Officer  
St. Tammany Parish  
Post Office Box 628  
Covington, Louisiana 70434  
Phone: 985-898-2445  
Fax: 985-875-2603  
Email: oiler@stpgov.org

**Mr. Shannon Davis**

Director, Public Works Department  
St. Tammany Parish  
Post Office Box 628  
Covington, LA 70471  
Phone: 985-898-2557  
Fax: 985-898-2549  
Email: sdavis@stpgov.org

**Mr. John Smith**

Director, Engineering Dept.  
St. Tammany Parish  
Post Office Box 628  
Covington, LA 70471  
Phone: 985-898-2552  
Fax: 985-898-5205  
Email: jesmith@stpgov.org

**Ms. Kim Salter**

Assistant CAO  
St. Tammany Parish  
Post Office Box 628  
Covington, LA 70434  
Phone: 985-898-2445  
Fax: 985-875-2603  
Email: ksalter@stpgov.org

**T. CHARLES PARISH**

**Mr. Sam Scholle**

Director, Dept. of Public Works  
St. Charles Parish  
100 River Oaks Drive  
Destrehan, LA 70047  
Phone: 985-783-5102  
Fax: 985-785-2207  
Email: [sscholle@stcharlesgov.net](mailto:sscholle@stcharlesgov.net)

**Ms. Kimberly Marousek**

Director, Dept. of Planning & Zoning  
St. Charles Parish  
Post Office Box 302  
Hahnville, LA 70057  
Phone: 985-783-5060  
Fax: 985-783-6447  
Email: [kmarousek@stcharlesgov.net](mailto:kmarousek@stcharlesgov.net)

**Mr. Tim Vial**

Chief Administrative Officer  
St. Charles Parish  
Post Office Box 302  
Hahnville, LA 70057  
Phone: 985-783-5000  
Fax: 985-783-2067  
Email: [tvial@stcharlesgov.net](mailto:tvial@stcharlesgov.net)

**ST. JOHN THE BAPTIST PARISH**

**Ms. Angelic Sutherland**

Special Asst. to the Parish President  
St. John the Baptist Parish  
1801 West Airline Highway  
Laplace, LA 70068  
Phone: 985-652-9569  
Fax: 985-359-5005  
Email: [a.sutherland@sjbparish.com](mailto:a.sutherland@sjbparish.com)

**Mr. Clifford Bailey**

Director, Public Works Dept.  
St. John Parish  
1801 West Airline Highway  
Laplace, LA 70068  
Phone: 985-652-4815  
Email: [c.bailey@sjbparish.com](mailto:c.bailey@sjbparish.com)

**Ms. Julia Remondet**

Director of Economic Development  
St. John the Baptist Parish  
1801 West Airline Highway  
Laplace, LA 70068  
Phone: 985-652-9569  
Email: [ecodev@sjbparish.com](mailto:ecodev@sjbparish.com)

**LA DEPT. OF TRANSPORTATION AND DEVELOPMENT**

**Ms. Donna Lavigne**

Public Transportation Administrator  
La. Dept. of Transportation and Development  
Post Office Box 94245  
Baton Rouge, LA 70804-9245  
Phone: 225-274-4302  
Fax: 225-274-4314  
Email: [donna.lavigne@la.gov](mailto:donna.lavigne@la.gov)

**Mr. Dan Magri, P.E.**

Traffic Safety Engineer  
La. Dept. of Transportation and Development  
Post Office Box 94245  
Baton Rouge, LA 70804-9245  
Phone: 225-379-1871  
Fax: 225-379-1807  
Email: [dan.magri@la.gov](mailto:dan.magri@la.gov)

**Mr. Mike Stack**

District Administrator, District 02  
La. Dept. of Transportation and Development  
Post Office Box 9180  
Bridge City, LA 70094  
Phone: 504-437-3100  
Fax: 504-437-3260  
Email: [Michael.Stack@la.gov](mailto:Michael.Stack@la.gov)

**Ms. Connie Standige**

District Administrator, District 62  
La. Dept. of Transportation and Development  
685 N. Morrison Road  
Hammond, LA 70401  
Phone: 985-375-0100  
Fax: 985-375-0260  
Email: [connie.standige@la.gov](mailto:connie.standige@la.gov)

**Mr. Steve Strength, PE**

Traffic Engineer, District 2  
La. Dept. of Transportation and Development  
10 Veterans Memorial Blvd.  
New Orleans, LA 70124  
Phone: 504-437-3100  
Fax: 504-437-3260  
Email: [Steve.Strength@la.gov](mailto:Steve.Strength@la.gov)

**Mr. Scott Boyle**

Traffic Engineer, District 62  
La. Dept. of Transportation and Development  
685 N. Morrison Road  
Hammond, LA 70401  
Email: [Scott.Boyle@la.gov](mailto:Scott.Boyle@la.gov)

**Ms. Dawn Sholmire**

La. Dept. of Transportation and Development  
Post Office Box 94245  
Baton Rouge, LA 70804  
Phone: 225-242-4570  
Email: dawn.sholmire@la.gov

**Mr. Dan Broussard**

La. Dept. of Transportation and Development  
Post Office Box 94245  
Baton Rouge, LA 70804  
Email: dan.broussard@la.gov

**Ms. Kimberly Mcdaniel**

Access Management Engineer  
La. Dept. of Transportation and Development  
Post Office Box 94245  
Baton Rouge, LA 70804  
Phone: 225-242-4633  
Email: kimberly.mcdaniel@la.gov

**Mr. Patrick Gallwey**

Chief Operating Officer  
New Orleans Port Authority  
Post Office Box 60046  
New Orleans, LA 70160  
Phone: 504-528-3305  
Fax: 504-528-3397  
Email: patg@portno.com

**Ms. Cathy Gautreaux**

Executive Director  
Louisiana Motor Transportation Assoc.  
4838 Bennington Ave.  
Baton Rouge, LA 70808  
Phone: 225-928-5682  
Fax: 225-928-0500  
Email: lmtacfg@bellsouth.net

**Mr. Iftikhar Ahmad**

Director of Aviation  
New Orleans Aviation Board  
Post Office Box 20007  
New Orleans, LA 70141  
Phone: 504-464-3536  
Email: iahmad@flymsy.com

**Raymond Nutall**

Deputy Director and Chief Engineer  
New Orleans Aviation Board  
Post office Box 20007  
New Orleans, LA 70141  
Phone: 504-303-7553  
Email: rnutall@flymsy.com

**Ms. Beth Inbau**

President and CEO  
National Safety Council  
South Louisiana Chapter  
4200 South I-10 Service Road, Suite 224  
Metairie, LA 70001  
Phone: 504-888-7618  
Fax: 888-7612  
Email: beth@metrosafety.org

**Mr. Carlton Dufrechou**

General Manager  
Greater New Orleans Expressway Comm.  
Post Office Box 7656  
Metairie, LA 70010  
Phone: 504-835-3118  
Fax: 504-835-2518  
Email: cdufrechou@gnoec.org

**Mr. David Miller**

Executive Director  
Crescent City Connection Division  
La. Dept. of Transportation and Development  
Post Office Box 6297  
New Orleans, LA 70174  
Phone: 504-376-8100  
Fax: 504-376-8189  
Email: david.miller@la.gov

**Mr. John Morrow**

Interim General Manager  
New Orleans Public Belt Railroad  
4822 Tchoupitoulas  
New Orleans, LA 70115  
Phone: 504-896-7410  
Fax: 504-896-7419  
Email: JohnM@nopb.com



**Mr. Jamie Setze**

Planning and Environmental Program Mgr.  
Federal Highway Administration  
5304 Flanders Dr., Ste. A  
Baton Rouge, LA 70808  
Phone: 225-757-7623  
Fax: 225-757-7601  
Email: jamie.setze@dot.gov

**Ms. Mary Stringfellow**

Federal Highway Administration  
5304 Flanders Dr., Ste. A  
Baton Rouge, LA 70808  
Phone: 225-757-7610  
Fax: 225-757-7601  
Email: mary.stringfellow@dot.gov

**Ms. Laura Wallace**

Community Planner  
Federal Transit Administration  
819 Taylor St., Rm. 8A36  
Ft. Worth, TX 76102  
Phone: 817-978-0561  
Email: laura.wallace@dot.gov

== == == == == == == == == :  
**Mr. Ryan Albright**

Program Officer for Metro Opportunities  
Greater N.O. Foundation  
1055 St. Charles Ave., Suite #100  
New Orleans, LA 70130  
Phone: 504-598-4663  
Fax: 504-598-4676  
Email: albright@gnof.org

**Ms. Rachel Diresto**

Executive Vice-President  
Center for Planning Excellence  
100 Lafayette St.  
Baton Rouge, LA 70801  
Phone: 225-389-7250  
Fax: 225-267-6306  
Email: rdiresto@cpex.org

**Ms. Marvel M. Robertson**

Field Office Director  
U.S. Department of Housing and  
Urban Development  
New Orleans Office  
500 Poydras St., 9<sup>th</sup> Floor  
New Orleans, LA 70130  
Phone: 504-671-3797  
Fax: 504-671-3751  
Email: Marvel.M.Robertson@hud.gov

**Ms. Rachel Heiligman**

Executive Director  
Transport for NOLA  
Post Office Box 19231  
New Orleans, LA 70179  
Phone: 504-521-6102  
Email: rachel@transportfornola.org

**Mr. Jason Tudor**

Associate State Director  
AARP  
2475 Canal St., Suite 270  
New Orleans, LA 70119  
Phone: 504-827-9830  
Email: jtudor@aarp.org

**Mr. Jamie Wine**

Executive Director  
Bike Easy  
Post Office Box 19371  
New Orleans, LA 70179  
Phone: 504-861-4022  
Email: jamie@bikeeasy.org

# **JOINT CERTIFICATION OF THE METROPOLITAN PLANNING PROCESS**

The Regional Planning Commission hereby certifies that the transportation planning process is addressing the major issues facing the St. Tammany urbanized areas and is being conducted in accordance with all applicable requirements of:

1. 23 U.S.C. 134, 49 U.S.C. 5303, and this subpart;
2. In nonattainment and maintenance areas, sections 174 and 176 (c) and (d) of the Clean Air Act, as amended (42 U.S.C. 7504, 7506(c) and (d)) and 40 CFR part 93;
3. Title VI of the Civil Rights Act of 1964 as amended (42 U.S.C. 2000d-1) and 49 CFR part 21;
4. 49 U.S.C. 5332, prohibiting discrimination on the basis of race, color, creed, national origin, sex, or age in employment or business opportunity;
5. Section 1101(b) of the SAFETEA-LU (Pub. L. 109-59) and 49 CFR part 26 regarding the involvement of disadvantaged business enterprises in US DOT funded projects;
6. 23 CFR part 230, regarding the implementation of an equal employment opportunity program on Federal and Federal-aid highway construction contracts;
7. The provisions of the Americans with Disabilities Act of 1990 (42 U.S.C. 12101 et seq.) and 49 CFR parts 27, 37, and 38;
8. The Older Americans Act, as amended (42 U.S.C. 6101), prohibiting discrimination on the basis of age in programs or activities receiving Federal financial assistance;
9. Section 324 of title 23 U.S.C. regarding the prohibition of discrimination based on gender; and
10. Section 504 of the Rehabilitation Act of 1973 (29 U.S.C. 794) and 49 CFR part 27 regarding discrimination against individuals with disabilities

---

Sherri LeBas, Secretary  
Louisiana Department of Transportation and Development

---

John F. Young, Jr., Chairman  
Regional Planning Commission

---

Date

---

Date

## Definitions

### State Project Number

Denotes official State Project Number which is assigned to a project for a particular phase of work such as engineering, right-of-way or construction.

### State Route

Official Federal or State Route Number.

### Project Description

To be used in conjunction with the State Route Number to define the limits of the project.

### Phase

Shows the particular project phase to be advanced:

R/W = right-of-way study

C = construction

PE = preliminary engineering

E = final design and engineering

OLY = overlay project

U = utility work

ACQ = acquisition of right-of-way

SDY = technical study

Rehab = rehabilitation

Drng = drainage work

ENV = environmental assessment.

### Estimated Cost

Total estimated cost of the project phase or work to be undertaken.

### Fund Source

The Fund Source identifies the most likely source of funds to be used to actually implement the project phase. Fund Sources shown in the Transportation Improvement Program include:

## Glossary

### **ARRA**

American Recovery and Reinvestment Act  
(Stimulus)

### **Demo**

Congressional High Priority or Demonstration  
Project

### **ER**

FHWA Emergency Relief (street restoration  
monies)

### **FBR**

Federal Bridge Replacement

### **IM**

Interstate Maintenance

### **NHS**

National Highway System

### **OLY**

Overlay

### **St. Gen.**

State general fund monies appropriated by the  
Louisiana Legislature

### **STP**

Surface Transportation Program Funds selected  
by an MPO for projects located inside its  
metropolitan area on federal aid eligible routes.

### **STP < 200K**

Federal funds the formula for large urban areas  
with population less than 200,000

### **STP ENH**

Transportation Enhancements

### **STP FLEX**

Federal funds programmed statewide through  
DOTD needs assessment process

### **STP HAZ**

Federal funds for hazard elimination and safety  
improvements.

### **TIMED**

Transportation Infrastructure Model for  
Economic Development (state gas tax funds)

**Transportation Improvement Program  
St. Tammany Urbanized Areas - Financially Constrained**

**FFY 11 (Federal Fiscal Year 10/1/10 - 9/30/11)**

**Project Category:** Operational Efficiency/Motorist Asst.      **Project Name:** I-12 Cantilever Sign Installation @ LA 21      **Length:**1.16  
**Sub-Category:** Traffic Control Devices      **Type of Improvement:** Sign Installation

Project No	MPO Area	Sponsor	State Route	Priority	Work Phase	Total Project Cost	Contingency	Federal Total	Non-Federal	Fund Source	Source Amount	Amendments
H.009032	MC	DOTD	I-12	1,3	C	\$492,000	\$541,200	\$487,080	\$54,120	IM	\$487,080	

**Project Category:** Operational Efficiency/Motorist Asst.      **Project Name:** LA 21 (Pinnacle Pkwy to Bootlegger Rd)      **Length:**0.62  
**Sub-Category:** Transp. Systems Mgmt.      **Type of Improvement:** Raised Median to Prevent Left Turns

Project No	MPO Area	Sponsor	State Route	Priority	Work Phase	Total Project Cost	Contingency	Federal Total	Non-Federal	Fund Source	Source Amount	Amendments
H.009265	MC	DOTD	LA 21	1	C	\$450,000	\$495,000		\$495,000	STCASH	\$495,000	

**Transportation Improvement Program  
St. Tammany Urbanized Areas - Financially Constrained**

**FFY 12 (Federal Fiscal Year 10/1/11 - 9/30/12)**

**Project Category:** Preservation      **Project Name:** LA 21 (LA 1084 to LA 1083)      **Length:**2.37  
**Sub-Category:** Non-Interstate      **Type of Improvement:** Overlay

Project No	MPO Area	Sponsor	State Route	Priority	Work Phase	Total Project Cost	Contingency	Federal Total	Non-Federal	Fund Source	Source Amount	Amendments
H. 001004	MC	DOTD	LA 21	3	C	\$858,000	\$943,800	\$755,040	\$188,760	STPFLEX	\$755,040	

**Project Category:** Safety      **Project Name:** US 11/ Left Turn Lane @ LA 3081/ LA 41      **Length:**0.24  
**Sub-Category:**      **Type of Improvement:** Left Turn Lane/ OPS Improvement

Project No	MPO Area	Sponsor	State Route	Priority	Work Phase	Total Project Cost	Contingency	Federal Total	Non-Federal	Fund Source	Source Amount	Amendments
H. 009108	SL	DOTD	US 11	1,3	C	\$250,000	\$275,000	\$247,500	\$27,500	SATRANS	\$247,500	

**Transportation Improvement Program  
St. Tammany Urbanized Areas - Financially Constrained**

**FFY 12 (Federal Fiscal Year 10/1/11 - 9/30/12)**

**Project Category:** Urban Systems/CMAQ      **Project Name:** US 190 (I-12 to LA 22)      **Length:**2.74

**Sub-Category:**      **Type of Improvement:** Overlay/ Add Aux. Lanes

Project No	MPO Area	Sponsor	State Route	Priority	Work Phase	Total Project Cost	Contingency	Federal Total	Non-Federal	Fund Source	Source Amount	Amendments
H.000492	MC	Parish	US 190	1,3	C	\$5,250,000	\$5,775,000	\$4,620,000	\$1,155,000	STP<200K	\$4,620,000	

**Project Category:** Capacity      **Project Name:** US 190 (LA 22 to Lonesome Rd)      **Length:**3.41

**Sub-Category:**      **Type of Improvement:** Widen to 4 lane divided

Project No	MPO Area	Sponsor	State Route	Priority	Work Phase	Total Project Cost	Contingency	Federal Total	Non-Federal	Fund Source	Source Amount	Amendments
H.000498	MC	Parish	US 190	1,2	C	\$11,300,000	\$12,430,000	\$9,944,000	\$2,486,000	STP<200K(US)	\$7,500,000	
										STP<200K(CA)	\$3,800,000	

**Transportation Improvement Program  
St. Tammany Urbanized Areas - Financially Constrained**

**FFY 12 (Federal Fiscal Year 10/1/11 - 9/30/12)**

**Project Category:** Urban Systems/CMAQ      **Project Name:** LA 22 (Dalwill Blvd to US 190)      **Length:**0.18

**Sub-Category:**      **Type of Improvement:** Minor Widen and Drainage Improvements

Project No	MPO Area	Sponsor	State Route	Priority	Work Phase	Total Project Cost	Contingency	Federal Total	Non-Federal	Fund Source	Source Amount	Amendments
H.000506	MC	Parish	LA 22	1,2,3	C	\$2,500,000	\$2,750,000	\$2,200,000	\$550,000	STP<200K	\$2,200,000	

**Project Category:** Preservation      **Project Name:** US 190 Bridges near Slidell      **Length:**0.45

**Sub-Category:** Bridge (on-system)      **Type of Improvement:** Bridge Replacement

Project No	MPO Area	Sponsor	State Route	Priority	Work Phase	Total Project Cost	Contingency	Federal Total	Non-Federal	Fund Source	Source Amount	Amendments
H.000511	SL	DOTD	US 190	3	C	\$3,169,000	\$3,485,900	\$3,137,310	\$348,590	FBR-ON	\$3,137,310	

**Transportation Improvement Program  
St. Tammany Urbanized Areas - Financially Constrained**

**FFY 12 (Federal Fiscal Year 10/1/11 - 9/30/12)**

**Project Category:** Operational Efficiency/Motorist Asst.      **Project Name:** Roundabout at LA 434 and US 190      **Length:**0.18  
**Sub-Category:** Transp. Systems Mgmt.      **Type of Improvement:** Roundabout

Project No	MPO Area	Sponsor	State Route	Priority	Work Phase	Total Project Cost	Contingency	Federal Total	Non-Federal	Fund Source	Source Amount	Amendments
H.000540	SL	DOTD	LA 434	1,2	C	\$750,000	\$825,000	\$742,500	\$82,500	STPFLEX	\$742,500	

**Project Category:** Preservation      **Project Name:** I-10 (Fr. Branch - W. Pearl River)      **Length:**2.71  
**Sub-Category:** Interstate      **Type of Improvement:** Rubbleize and Overlay

Project No	MPO Area	Sponsor	State Route	Priority	Work Phase	Total Project Cost	Contingency	Federal Total	Non-Federal	Fund Source	Source Amount	Amendments
H.003107	SL	DOTD	I-10	3	C	\$16,210,000	\$17,831,000	\$14,264,800	\$3,566,200	IM	\$14,264,800	

**Transportation Improvement Program  
St. Tammany Urbanized Areas - Financially Constrained**

**FFY 12 (Federal Fiscal Year 10/1/11 - 9/30/12)**

**Project Category:** Preservation      **Project Name:** I-59 (I-12 to Miss S/L)      **Length:** 11.82  
**Sub-Category:** Interstate      **Type of Improvement:** Patching and Joint Seal

Project No	MPO Area	Sponsor	State Route	Priority	Work Phase	Total Project Cost	Contingency	Federal Total	Non-Federal	Fund Source	Source Amount	Amendments
H.003398	SL	DOTD	I-59	3	C	\$7,500,000	\$8,250,000	\$7,425,000	\$825,000	IM Disc	\$2,222,000	
										IM	\$5,278,000	

**Project Category:** Operational Efficiency/Motorist Asst.      **Project Name:** I-59 Pearl River Rest Area      **Length:**  
**Sub-Category:** Rest Areas      **Type of Improvement:** Parking. Lighting. Pavilions

Project No	MPO Area	Sponsor	State Route	Priority	Work Phase	Total Project Cost	Contingency	Federal Total	Non-Federal	Fund Source	Source Amount	Amendments
H.003641	SL	DOTD	I-59	2	C	\$6,000,000	\$6,600,000	\$5,940,000	\$660,000	IM	\$5,940,000	



**Transportation Improvement Program  
St. Tammany Urbanized Areas - Financially Constrained**

**FFY 12 (Federal Fiscal Year 10/1/11 - 9/30/12)**

**Project Category:** Urban Systems/CMAQ      **Project Name:** **Boston Street Signals**      **Length:**0.28

**Sub-Category:**      **Type of Improvement:** Signalization

Project No	MPO Area	Sponsor	State Route	Priority	Work Phase	Total Project Cost	Contingency	Federal Total	Non-Federal	Fund Source	Source Amount	Amendments
H.009114	MC	City of Cov.	US 190X	2,3	C	\$800,000	\$880,000	\$704,000	\$176,000	STP<200K	\$704,000	

**Project Category:** Safety      **Project Name:** **I-12 EB Exit Ramp Extension at US 190**      **Length:**0.47

**Sub-Category:**      **Type of Improvement:** Exit Ramp Extension

Project No	MPO Area	Sponsor	State Route	Priority	Work Phase	Total Project Cost	Contingency	Federal Total	Non-Federal	Fund Source	Source Amount	Amendments
H.009125	MC	DOTD	I-12	1	C	\$750,000	\$825,000	\$742,500	\$82,500	HSIP	\$742,500	



**Transportation Improvement Program  
St. Tammany Urbanized Areas - Financially Constrained**

**FFY 13 (Federal Fiscal Year 10/1/12 - 9/30/13)**

**Project Category:** Operational Efficiency/Motorist Asst.      **Project Name:** **US 190 (Bogue Falaya Bridge to LA 437)**      **Length:**

**Sub-Category:**      **Type of Improvement:** **Right Turn Lane**

Project No	MPO Area	Sponsor	State Route	Priority	Work Phase	Total Project Cost	Contingency	Federal Total	Non-Federal	Fund Source	Source Amount	Amendments
	MC	Parish	US 190	1,2	C	\$1,200,000	\$1,320,000	\$1,056,000	\$264,000	STP<200K	\$1,056,000	

**Project Category:** Preservation      **Project Name:** **LA 41 (LA 435 to LA 21)**      **Length:**7.51

**Sub-Category:** Non-Interstate      **Type of Improvement:** **Cold Plane and Overlay**

Project No	MPO Area	Sponsor	State Route	Priority	Work Phase	Total Project Cost	Contingency	Federal Total	Non-Federal	Fund Source	Source Amount	Amendments
H.001331	SL	DOTD	LA 41	3	C	\$3,379,000	\$3,716,900	\$2,973,520	\$743,380	STPFLEX	\$2,629,000	
										STPENH	\$750,000	



**Transportation Improvement Program  
St. Tammany Urbanized Areas - Financially Constrained**

**FFY 13 (Federal Fiscal Year 10/1/12 - 9/30/13)**

**Project Category:** Safety **Project Name:** Roundabout at Barkers Corner **Length:** 0.19

**Sub-Category:** **Type of Improvement:** Traffic Flow Improvement

Project No	MPO Area	Sponsor	State Route	Priority	Work Phase	Total Project Cost	Contingency	Federal Total	Non-Federal	Fund Source	Source Amount	Amendments
H.002447	MC	DOTD	LA 40	1,2	C	\$1,500,000	\$1,650,000	\$1,650,000	\$-00	HSIP	\$1,650,000	

**Project Category:** DEMO **Project Name:** US 11 (Lake Pontchartrain to Spartan Dr.) **Length:**

**Sub-Category:** Urban Systems/CMAQ **Type of Improvement:** Widen 2 Lane/ 4 lane Divided

Project No	MPO Area	Sponsor	State Route	Priority	Work Phase	Total Project Cost	Contingency	Federal Total	Non-Federal	Fund Source	Source Amount	Amendments
H.004983	SL	Parish	US 11	1,2,3	C	\$20,000,000	\$22,000,000	\$17,600,000	\$4,400,000	DEMO	\$4,738,000	
										STP<200K	\$12,000,000	
										NFI	\$3,262,000	



**Transportation Improvement Program  
St. Tammany Urbanized Areas - Financially Constrained**

**FFY 13 (Federal Fiscal Year 10/1/12 - 9/30/13)**

**Project Category:** Corridor

**Project Name:** I-12 (US 11 to Northshore Blvd)

**Length:**

**Sub-Category:**

**Type of Improvement:** Widen to 6 Lanes

Project No	MPO Area	Sponsor	State Route	Priority	Work Phase	Total Project Cost	Contingency	Federal Total	Non-Federal	Fund Source	Source Amount	Amendments
H.009185	SL	Parish	I-12	1,2	C	\$55,200,000	\$60,720,000	\$200,000	\$60,520,000	NHS	\$200,000	
										St. Surplus	\$55,200,000	

**Project Category:** DEMO

**Project Name:** Pile Restoration- Transformer Platforms

**Length:**

**Sub-Category:**

**Type of Improvement:** Encapsulate 76 Piles on 19 Transformers

Project No	MPO Area	Sponsor	State Route	Priority	Work Phase	Total Project Cost	Contingency	Federal Total	Non-Federal	Fund Source	Source Amount	Amendments
H.009322		DOTD	-	3	C	\$760,000	\$836,000	\$668,800	\$167,200	DEMO	\$668,800	



**Transportation Improvement Program  
St. Tammany Urbanized Areas - Financially Constrained**

**FFY 13 (Federal Fiscal Year 10/1/12 - 9/30/13)**

**Project Category:** Operational Efficiency/Motorist Asst.      **Project Name:** LA 1085 @ LA 1077      **Length:**1.02  
**Sub-Category:** Access Mgmt.      **Type of Improvement:** Construct Roundabout

Project No	MPO Area	Sponsor	State Route	Priority	Work Phase	Total Project Cost	Contingency	Federal Total	Non-Federal	Fund Source	Source Amount	Amendments
H.009341	MC	Parish	LA 1085	1,2,3	C	\$2,350,000	\$2,585,000	\$2,068,000	\$517,000	AM	\$1,570,000	
										STP<200K	\$500,000.00	

**Project Category:** Safety      **Project Name:** US 190 Guardrail Installation      **Length:**1  
**Sub-Category:**      **Type of Improvement:** Guard Rail Installation

Project No	MPO Area	Sponsor	State Route	Priority	Work Phase	Total Project Cost	Contingency	Federal Total	Non-Federal	Fund Source	Source Amount	Amendments
H.009431	MC	DOTD	US 190	1	C	\$500,000	\$550,000	\$495,000	\$55,000	SATRANS	\$495,000	

**Transportation Improvement Program  
St. Tammany Urbanized Areas - Financially Constrained**

**FFY 13 (Federal Fiscal Year 10/1/12 - 9/30/13)**

**Project Category:** Safety **Project Name:** Parishwide Signage Upgrade **Length:**  
**Sub-Category:** Local Rd. Safety **Type of Improvement:** Signage

Project No	MPO Area	Sponsor	State Route	Priority	Work Phase	Total Project Cost	Contingency	Federal Total	Non-Federal	Fund Source	Source Amount	Amendments
H.009460		DOTD	-	1	C	\$14,000	\$15,400	\$13,860	\$1,540	SATRANS	\$13,860	

**Project Category:** Urban Systems/CMAQ **Project Name:** US 190 @ Northshore Blvd **Length:**  
**Sub-Category:** Transp. Systems Mgmt. **Type of Improvement:** Intersection Improvements

Project No	MPO Area	Sponsor	State Route	Priority	Work Phase	Total Project Cost	Contingency	Federal Total	Non-Federal	Fund Source	Source Amount	Amendments
	SL	Parish	US 190	1,2	C	\$2,441,000	\$2,685,100	\$2,148,080	\$537,020	DEMO	\$220,000	
										STP<200K	\$1,900,000.00	

**Transportation Improvement Program  
St. Tammany Urbanized Areas - Financially Constrained**

**FFY 14 (Federal Fiscal Year 10/1/13 - 9/30/14)**

**Project Category:** Preservation      **Project Name:** Salt Bayou Bridge      **Length:**0.01  
**Sub-Category:** Bridge (on-system)      **Type of Improvement:** Bridge Replacement

Project No	MPO Area	Sponsor	State Route	Priority	Work Phase	Total Project Cost	Contingency	Federal Total	Non-Federal	Fund Source	Source Amount	Amendments
H.000689	SL	DOTD	LA 433	3	C	\$3,847,000	\$4,231,700	\$3,385,360	\$846,340	FBR-ON	\$3,385,360	

**Project Category:** Preservation      **Project Name:** LA21 (LA 40 to LA 16)      **Length:**3.03  
**Sub-Category:** Non-Interstate      **Type of Improvement:** Overlay

Project No	MPO Area	Sponsor	State Route	Priority	Work Phase	Total Project Cost	Contingency	Federal Total	Non-Federal	Fund Source	Source Amount	Amendments
H.001006	SL	DOTD	LA 21	3	C	\$1,062,000	\$1,168,200	\$934,560	\$233,640	NHS	\$934,560	





**Transportation Improvement Program  
St. Tammany Urbanized Areas - Financially Constrained**

**FFY 14 (Federal Fiscal Year 10/1/13 - 9/30/14)**

**Project Category:** Preservation      **Project Name:** I-10/ I-12 Slab Repair      **Length:**46.02  
**Sub-Category:** Interstate      **Type of Improvement:** Rdwy Maintenance/Rehab/ Repair

Project No	MPO Area	Sponsor	State Route	Priority	Work Phase	Total Project Cost	Contingency	Federal Total	Non-Federal	Fund Source	Source Amount	Amendments
H.009596	SL/MC	DOTD	I-12	3	C	\$1,500,000	\$1,650,000	\$1,485,000	\$165,000	IM	\$1,485,000	

**Project Category:** Preservation      **Project Name:** LA 1083 (LA 440- LA 21)      **Length:**5.43  
**Sub-Category:** NF      **Type of Improvement:** Overlay/ Drainage

Project No	MPO Area	Sponsor	State Route	Priority	Work Phase	Total Project Cost	Contingency	Federal Total	Non-Federal	Fund Source	Source Amount	Amendments
H.008372	SL	DOTD	LA 1083	3	C	\$4,148,000	\$4,562,800	\$3,650,240	\$912,560	NFA	\$3,650,240	

**Transportation Improvement Program  
St. Tammany Urbanized Areas - Financially Constrained**

**FFY 15 (Federal Fiscal Year 10/1/14 - 9/30/15)**

**Project Category:** Urban Systems/CMAQ      **Project Name:** **Summit Blvd. (US 190 to LA 433)**      **Length:**  
**Sub-Category:**      **Type of Improvement:** **New Four Lane Roadway**

Project No	MPO Area	Sponsor	State Route	Priority	Work Phase	Total Project Cost	Contingency	Federal Total	Non-Federal	Fund Source	Source Amount	Amendments
H.009309	SL	City of Slidell -		2,4	C	\$3,623,000	\$3,985,300	\$3,188,240	\$797,060	STP<200K	\$3,188,240	

**Project Category:** Preservation      **Project Name:** **LA 437 (US 190B to LA 25)**      **Length:**1.88  
**Sub-Category:** Non-Interstate      **Type of Improvement:** **Maintenance/ Rehab/ Restoration**

Project No	MPO Area	Sponsor	State Route	Priority	Work Phase	Total Project Cost	Contingency	Federal Total	Non-Federal	Fund Source	Source Amount	Amendments
H.009551	MC	DOTD	LA 437	3	C	\$884,000	\$972,400	\$777,920	\$194,480	STPFLEX	\$777,920	

**Transportation Improvement Program  
St. Tammany Urbanized Areas - Financially Constrained**

**FFY 15 (Federal Fiscal Year 10/1/14 - 9/30/15)**

**Project Category:** Preservation      **Project Name:** I-10 (W. Pearl River- Pearl River Br.)      **Length:**3.58

**Sub-Category:** Interstate      **Type of Improvement:** Maintenance/ Rehab/ Restoration

Project No	MPO Area	Sponsor	State Route	Priority	Work Phase	Total Project Cost	Contingency	Federal Total	Non-Federal	Fund Source	Source Amount	Amendments
H.009597	SL	DOTD	I-10	3	C	\$3,000,000	\$3,300,000	\$2,970,000	\$330,000	IM	\$2,970,000	

**Project Category:** Preservation      **Project Name:** I-12 (Tangi P/L to US 190)      **Length:**10.13

**Sub-Category:** Interstate      **Type of Improvement:** Maintenance/ Rehab/ Restoration

Project No	MPO Area	Sponsor	State Route	Priority	Work Phase	Total Project Cost	Contingency	Federal Total	Non-Federal	Fund Source	Source Amount	Amendments
H.009600	MC	DOTD	I-12	3	C	\$10,000,000	\$11,000,000	\$9,900,000	\$1,100,000	IM	\$9,900,000	

**Transportation Improvement Program  
St. Tammany Urbanized Areas - Financially Constrained**

**FFY 16 (Federal Fiscal Year 10/1/15 - 9/30/16)**

**Project Category:** Preservation      **Project Name:** **US 90 (Pearl River Bridges)**      **Length:**2.78

**Sub-Category:** Bridge (on-system)      **Type of Improvement:** Maintenance/ Rehab/ Restoration

Project No	MPO Area	Sponsor	State Route	Priority	Work Phase	Total Project Cost	Contingency	Federal Total	Non-Federal	Fund Source	Source Amount	Amendments
H.000284	SL	DOTD	US 90	3	C	\$18,057,000	\$19,862,700	\$15,890,160	\$3,972,540	FBR-ON	\$15,890,160	

**Project Category:** Preservation      **Project Name:** **LA 40 at the Tchefuncte River**      **Length:**0.19

**Sub-Category:** Bridge (on-system)      **Type of Improvement:** New Bridge

Project No	MPO Area	Sponsor	State Route	Priority	Work Phase	Total Project Cost	Contingency	Federal Total	Non-Federal	Fund Source	Source Amount	Amendments
H. 002446	MC	DOTD	LA 40	3	C	\$3,310,000	\$3,641,000	\$2,912,800	\$728,200	FBR-ON	\$2,912,800	

**Transportation Improvement Program  
St. Tammany Urbanized Areas - Financially Constrained**

**Post FFY16**

**Project Category:** Preservation      **Project Name:** East Pearl River Bridge Replacement      **Length:**0.37  
**Sub-Category:** Bridge (on-system)      **Type of Improvement:** Bridge Replacement

Project No	MPO Area	Sponsor	State Route	Priority	Work Phase	Total Project Cost	Contingency	Federal Total	Non-Federal	Fund Source	Source Amount	Amendments
H.000286	SL	DOTD	US 90	3	C	\$15,090,000	\$16,599,000	\$13,279,200	\$3,319,800	FBR-ON	\$13,279,200	

**Project Category:** Corridor      **Project Name:** US 190 (LA 433 to US 11)      **Length:**3.35  
**Sub-Category:**      **Type of Improvement:** Widen to 4 lane divided

Project No	MPO Area	Sponsor	State Route	Priority	Work Phase	Total Project Cost	Contingency	Federal Total	Non-Federal	Fund Source	Source Amount	Amendments
H.000494	SL	Parish	US 190	1,2,3	C	\$45,000,000	\$49,500,000	\$39,600,000	\$9,900,000	STP	\$39,600,000	

**Transportation Improvement Program  
St. Tammany Urbanized Areas - Financially Constrained**

**Post FFY16**

**Project Category:** Corridor **Project Name:** **US 190 (Bayou Castine to SELA Hospital)** **Length:** 1.4

**Sub-Category:** **Type of Improvement:** Widen to 4 lane divided

Project No	MPO Area	Sponsor	State Route	Priority	Work Phase	Total Project Cost	Contingency	Federal Total	Non-Federal	Fund Source	Source Amount	Amendments
H.000497	MC	Parish	US 190	1,2,3	C	\$14,200,000	\$15,620,000	\$12,496,000	\$3,124,000	STP	\$12,496,000	

**Project Category:** Preservation **Project Name:** **US 11 (US 190 to I-12)** **Length:**

**Sub-Category:** Bridge (on-system) **Type of Improvement:** Widen to 4 lane divided

Project No	MPO Area	Sponsor	State Route	Priority	Work Phase	Total Project Cost	Contingency	Federal Total	Non-Federal	Fund Source	Source Amount	Amendments
H.000688	SL	DOTD	US 11	3	C	\$25,000,000	\$27,500,000	\$22,000,000	\$5,500,000	FBR-ON STP<200K St. Surplus	\$22,000,000	

**Transportation Improvement Program  
St. Tammany Urbanized Areas - Financially Constrained**

**Post FFY16**

**Project Category:** Capacity

**Project Name:** US 190 (US 190B to LA 25)

**Length:** 2.13

**Sub-Category:**

**Type of Improvement:** Widen to 4 lane divided

Project No	MPO Area	Sponsor	State Route	Priority	Work Phase	Total Project Cost	Contingency	Federal Total	Non-Federal	Fund Source	Source Amount	Amendments
H.001344	MC	Parish	US 190	1,2,3	C	\$30,000,000	\$33,000,000	\$26,400,000	\$6,600,000	STP	\$26,400,000	

**Project Category:** Capacity

**Project Name:** LA 22 (Tchefuncte Riv. To W. Causeway)

**Length:**

**Sub-Category:**

**Type of Improvement:** Widen to 4 lane divided

Project No	MPO Area	Sponsor	State Route	Priority	Work Phase	Total Project Cost	Contingency	Federal Total	Non-Federal	Fund Source	Source Amount	Amendments
H.002391	MC	Parish	LA 22	1,2,3	C	\$30,000,000	\$33,000,000	\$26,400,000	\$6,600,000	STP	\$26,400,000	



**Transportation Improvement Program  
St. Tammany Urbanized Areas - Financially Constrained**

**Post FFY16**

**Project Category:** Other/Misc.      **Project Name:** LA 433 (US 11 to US 190)      **Length:** 5.08

**Sub-Category:**      **Type of Improvement:** 2 Lane Reconstruction

Project No	MPO Area	Sponsor	State Route	Priority	Work Phase	Total Project Cost	Contingency	Federal Total	Non-Federal	Fund Source	Source Amount	Amendments
H.004937	SL	Parish	LA 433	3	C	\$15,000,000	\$16,500,000	\$13,200,000	\$3,300,000	STP	\$13,200,000	

**Project Category:** TIMED      **Project Name:** LA 3241 (I-12 to LA 36)      **Length:**

**Sub-Category:**      **Type of Improvement:** New 4 lane divided

Project No	MPO Area	Sponsor	State Route	Priority	Work Phase	Total Project Cost	Contingency	Federal Total	Non-Federal	Fund Source	Source Amount	Amendments
H.004957	MC	DOTD	LA 3241	1,2,4	C	\$60,000,000	\$66,000,000		\$66,000,000	TIMED	\$-00	

**Transportation Improvement Program  
St. Tammany Urbanized Areas - Financially Constrained**

**Post FFY16**

**Project Category:** Preservation      **Project Name:** LA 1077 @ Black Bayou (Madisonville)      **Length:**0.27  
**Sub-Category:** Bridge (on-system)      **Type of Improvement:** New Bridge

Project No	MPO Area	Sponsor	State Route	Priority	Work Phase	Total Project Cost	Contingency	Federal Total	Non-Federal	Fund Source	Source Amount	Amendments
H.008358	MC	DOTD	LA 1077	3	C	\$1,466,000	\$1,612,600	\$1,290,080	\$322,520	FBR-ON	\$1,290,080	