

**Fiscal Years 2006 - 2031**



**Metropolitan Transportation Plan  
St. Tammany Urbanized Areas**

**November 14, 2006**

# Metropolitan Transportation Plan

*East St. Tammany/Slidell  
Mandeville/Covington  
Urbanized Areas  
Fiscal Years 2006 - 2031*

---

*Prepared by:*

**Regional Planning Commission**  
Jefferson, Orleans, Plaquemines, St. Bernard  
and St. Tammany Parishes  
1340 Poydras Street, Suite 2100  
New Orleans, LA 70112  
[www.norpc.org](http://www.norpc.org)

**November 14, 2006**

---



# CONTENTS

---

	<b>Page</b>
Introduction .....	1
Project Development Process.....	3
Air Quality and Environmental Mitigation Activities.....	4
Financial Constraint.....	6
Non-Motorized Transportation .....	8
Safety and Security .....	9
Public Involvement Plan.....	10
Plan Development .....	11
LaDOTD Highway Project Prioritization Process.....	12
Slidell/East St. Tammany Urbanized Area .....	14
Mandeville/Covington Urbanized Area .....	17
Glossary of Acronyms and Terms .....	20

## **HIGHWAY PROJECTS**

<i>Tier I</i>	Fiscal Year 06 .....	22
	Fiscal Year 07 .....	23
	Fiscal Year 08 .....	24
<i>Tier II</i>	Fiscal Year 09 .....	25
	Fiscal Year 10 .....	26
	Fiscal Years 11-15.....	27
<i>Tier III</i>	Fiscal Year 16-31 .....	28
<i>Tier IIIb</i>	Future Urbanized Area Projects, Unfunded.....	29
	Regionally Recognized Potential Hurricane Evacuation Routes.....	29
	Projects identified in St. Tammany's Infrastructure 2010 Plan on the LaDOTD Highway Network.....	30
	Projects identified in St. Tammany's Infrastructure 2010 Plan but not on the LaDOTD Highway Network.....	32
	Projects in Parish Emergency Infrastructure Plan.....	34

## **TRANSIT PROJECTS**

<i>Tier I</i>	Fiscal Year 06 .....	35
	Fiscal Year 07 .....	37
	Fiscal Year 08 .....	39
<i>Tier II</i>	Fiscal Years 09-13.....	40
<i>Tier III</i>	Fiscal Years 14-30.....	40

## **APPENDICES**

List of entities contacted for public comment on the Plan	
DOTD's policy on funding capacity projects	

# INTRODUCTION

---

In accordance with the Safe, Accountable, Flexible, Efficient Transportation Equity Act, a Legacy for Users, the successor legislation of the *Transportation Equity Act for the 21<sup>st</sup> Century (TEA-21)* the Metropolitan Transportation Plan (MTP) is prepared every five years for the East St. Tammany/Slidell Urbanized Area, and the Mandeville-Covington Urbanized Area by the Regional Planning Commission in cooperation with St. Tammany Parish, the Cities of Slidell, Mandeville, and Covington, the Louisiana Department of Transportation and Development and the transit department of St. Tammany Parish government, as the transit provider for St. Tammany Parish.

The Metropolitan Transportation Plan (MTP) consists of a priority list of projects and project segments that are being advanced towards implementation over the next twenty years.

The Highway and Transit elements of the MTP are divided into three tiers that correspond to expected implementation dates. Tier I of the MTP is also the Transportation Improvement Program for the East St. Tammany/Slidell, and Mandeville-Covington Urbanized Area; a three-year, fiscally constrained implementation program for fiscal years 2007-2010. Tier II projects are those longer range improvements that are in the planning and development stage between the fiscal years 2011 through 2015 that are expected to advance towards implementation based on funding availability. Tier III projects are longer-range projects, typically complex to implement (fiscally, environmentally, etc) and “illustrative” projects that are projects deemed necessary but are as yet without an identified funding source. Tier III projects also include estimated annual expenditures for certain recurrent budgetary line items, such as Overlays, Enhancements, etc.

The first draft of this document was presented on August 9, 2005. On or about August 29, 2005, St. Tammany Parish, as well as other parishes in the New Orleans area and counties on the Mississippi Gulf Coast was struck by Hurricane Katrina. Storm surges of over 25 feet and winds in excess of 130 miles per hour proved devastating to the region. The eastern areas of St. Tammany Parish, particularly the City of Slidell and the community of Northshore, were devastated, having taken a direct hit from the land-falling storm. Moreover, the hurricane protection system in place on the southshore of Lake Pontchartrain, particularly in Orleans and St. Bernard Parishes, suffered catastrophic failure. The subsequent inundation of these areas forced the relocation of *hundreds of thousands* of residents, and has

had far-reaching impacts across the nation. The hurricane has proven not only to be the costliest, but the scale of devastation is unprecedented in the American experience. Many of these displaced residents have, at this writing, resettled in other, less impacted areas of St. Tammany. It is anticipated that many will stay permanently.

This creates a singularly unique circumstance in transportation planning. Population, employment and socio-economic growth trends that were years and decades in the making have now occurred in a timeframe of about three months in some parts of the parish, while other parts struggle with basic human needs, such as housing, water, and sanitation services. Previous forecasts for many of these trends are now very fluid and may well prove irrelevant in the new, post-Katrina reality of southeast Louisiana.

Significant amounts of federal resources have been deployed to the region to assist in the recovery effort. Billions of dollars in recovery aid have been appropriated by Congress at the recommendation of the President. As a result, projects that have long been recognized by the community as needed but unfunded for a variety of reasons may now be undertaken with a renewed sense of urgency and purpose through the use of disaster and hazard mitigation-related sources.

Additionally, prior to Hurricane Katrina, St. Tammany Parish had embarked upon an ambitious plan of infrastructure improvements identified in their *Infrastructure 2010 Plan*. The *Infrastructure Plan*, in turn, resulted from the New Directions 2025 Plan, a comprehensive planning process that was initiated with the assistance of the Regional Planning Commission, through the use of FHWA Transportation and Community and System Preservation funding. The comprehensive planning effort, through sometimes hard-fought consensus building, has achieved a degree of sustainability unprecedented in the State of Louisiana. Impact fees for new, planned development are being assessed, and revenues generated are being reinvested in infrastructure. Projects identified in the *Infrastructure Plan* are included in the MTP to illustrate parish priorities, and to advise the reader of projects that may be incorporated into the formalized TIP/STIP process at a later date.



# **PROJECT DEVELOPMENT PROCESS**

---

Projects are selected for inclusion in the MTP through a comprehensive, coordinated, and continuing transportation planning process carried out by the RPC in cooperation with St. Tammany Parish, the cities of Slidell, Mandeville, and Covington, and the Louisiana Department of Transportation and Development. This planning process identifies needs in the planning study area (see Figures 1 and 3), tests alternative solutions, and proposes allocation of financial resources.

Needs are identified through ongoing data collection and analysis activities such as the LADOTD traffic count program and the RPC congestion management systems surveillance program. Input on system deficiencies and other needs are also received from parish and municipal technical and professional staff, local policy makers, and the general public.

Alternative solutions are compared through feasibility studies and various transportation modeling and analysis techniques. The RPC in conjunction with LADOTD has developed and maintains a computerized long range transportation demand model, as well as micro-scale simulation models that can estimate the impacts that various projects or combinations of projects will have on the transportation system. From this comparative process, a set of proposed projects is put forth for consideration.

Allocation of financial resources is determined through a cooperative effort of the RPC acting as the Metropolitan Planning Organization, St. Tammany Parish and the Louisiana Department of Transportation and Development. All three of these participants must agree on projects before they can be included in the MTP. However, in urban areas of under 200,000 people such as St. Tammany (prior to Hurricane Katrina), the LADOTD normally is the lead agency in regard to these allocations. This is because LADOTD administers the statewide allocation of federal funds and the non-federal share for most projects comes from the Louisiana Transportation Trust Fund.

---

# **AIR QUALITY STATUS AND ENVIRONMENTAL MITIGATION ACTIVITIES**

---

## **Air Quality:**

As of April 2006, St. Tammany Parish is an air quality attainment area. Because St. Tammany Parish neither contributes to nor suffers from ambient air quality problems, the Louisiana Department of Environmental Quality has determined that St. Tammany Parish should not be included in the New Orleans air quality maintenance area which consisted of the five parishes of Jefferson, Plaquemines, Orleans, St. Bernard, and St. Charles. Effective June 15, 2005, the New Orleans area had met national ambient air quality standards, particularly as they pertain to the new, more rigorous 8-hour standard for ozone pollution.

Nonetheless, St. Tammany Parish is undertaking several initiatives to reduce vehicle miles traveled and enhance the overall quality of life. Among these are bike trails, park and ride lots, vanpooling, and planning efforts to explore the feasibility of both commuter and local transportation service. Additionally, St. Tammany Parish has undertaken a sweeping and ongoing comprehensive land use planning and coordination effort that has established a basis for rational and sustainable development patterns throughout the parish.

## **Environmental Mitigation:**

As part of SAFETEA-LU legislation, MPO's are required to include a discussion of environmental mitigation activities along with potential sites to carry out environmental mitigation. The Regional Planning Commission, in conjunction with St. Tammany Parish has taken a holistic approach to the issue of environmental mitigation by sponsoring and advocating comprehensive planning activities in the parish. St. Tammany participates in numerous regional environmental and conservation initiatives, such as the Lake Pontchartrain Basin Foundation, Brownfields redevelopment and PACE (Parishes Against Coastal Erosion), all of which fit into a broader regional context that involves the MPO, sundry state agencies, nearby states, and other federal agencies.

St. Tammany has also initiated basin retention modeling that seeks to preserve land from development at the headwaters of local bayous and streams so that runoff from significant rain events and storms can be controlled and effectively managed. Areas of concern for the parish in-

clude but are not limited to Bayou Chinchuba, Bayou Liberty and the Tchefuncte River Basin.

St. Tammany, though growing rapidly, still retains significant natural charm. The southern half of the parish is at once the most densely populated part of the parish and is also within the Coastal Zone, as defined by the Coastal Zone Management Plan promulgated by the Louisiana Department of Environmental Quality. Transportation projects undertaken in this area of the parish are carefully considered for their impacts to wetlands and coastal ecosystems. Secondary impacts of transportation projects are considered as part of the planning process, and MPO works closely with LaDOTD, the US Army Corps of Engineers, and other advocacy groups in assessing potential impacts in the area.

Further, pursuant to the proposed implementation guidance from the federal Department of Transportation, RPC has proactively sought the input of applicable resource and permitting agencies that have a jurisdictional interest in St. Tammany Parish. A listing of those entities directly contacted for comment can be found in Appendix A of this document.

---

# FINANCIAL CONSTRAINT

---

Both the MTP and the Transportation Improvement Program have been financially constrained to reflect realistic and available levels of project funding. A review of the State's proposed construction program was carried out jointly by RPC and LADOTD. This effort resulted in the selection of a relatively small number of project priorities that were in a position to go forward and for which funding reasonably could be expected to be available in Tier I.

Other methods were also employed to establish financial constraint. This consisted of a review of the actual letting list of projects over the last ten years to establish a history of federal and state funding by project category. Since Interstate funding is no longer available for new construction, this category was eliminated from future funding consideration. An average estimated amount of both federal and non-federal financial resources was thereby derived and used as a benchmark in the prioritization process. The State has also earmarked for programming purposes approximately \$3,000,000 a year of "under 200 K funds" to the East St. Tammany/Slidell urbanized area and approximately \$2,000,000 per year for Mandeville-Covington. These funds plus 20% were used to assist in establishing a priority program as developed by the RPC in consultation with the parish, the public, and LADOTD.

Additionally, pursuant to LADOTD project prioritization process, approximately \$8 Million per year is available for capacity projects in LaDOTD District 062, which serves six parishes including St. Tammany Parish. St. Tammany Parish, per the 2000 census, comprises approximately 40% of the population of the District. Nearly all estimates of population post-Hurricane Katrina have this percentage as being much higher. As such and for planning purposes, RPC has assumed an appropriate allocation of available funds for Tier III projects in the program. Since this revised document was made public in April 2006, the Louisiana Department of Transportation and Development has advised the MPO that funding for capacity projects from programs other than urbanized attributable will end in fiscal year 2010. Projects listed in this document that were to be undertaken under a "Capacity Allocation" in the plan, particularly in later stages of the plan, are not fiscally constrained. LaDOTD's policy on this issue can be found in Appendix B. Projects in the plan that were listed in the "Capacity Allocation" section remain in the document but are listed as "unfunded" capacity projects.

Included in the Metropolitan Transportation Plan are roadway projects identified by St. Tammany Parish as part of their *Infrastructure 2010 Plan*. The Infrastructure Plan was developed in support of the New Di-

rection 2025 Comprehensive Plan, the initiation of which was assisted by RPC in 2001. The roadway improvements portion of the infrastructure plan identifies projects and associated costs that will improve mobility within the parish and support land use policies that have been derived from the broader comprehensive planning effort. St. Tammany Parish is the only parish in Louisiana to date that assesses impact fees for development. Revenues generated from these fees are reinvested in parish infrastructure and roadways. Projects included in the *Infrastructure* plan are included in the MTP to illustrate priorities of the parish and to advise the reader of projects that may be incorporated into the formalized TIP/STIP process at a later date, and that local funding from impact fees may be used for implementation.

And finally, several projects have been identified post-Hurricane Katrina as necessary for regional hurricane/emergency evacuation purposes. Funding for these projects would be dependent primarily upon emergency infrastructure funding from Congress. The emergency appropriations process is ongoing at this writing. Projects not included in either the fiscally constrained plan, or the Infrastructure Plan, may be identified from another process, primarily ESF-14 and Hazard Mitigation funding per Federal Emergency Management Agency (FEMA) implementation criteria, and the Infrastructure Plan promulgated by the Louisiana Recovery Authority.

---

# **NON-MOTORIZED TRANSPORTATION**

---

The Regional Planning Commission is committed to encouraging the use of non-motorized modes of transportation, such as bicycling and walking. RPC encourages the inclusion of bicycle and pedestrian facilities in reconstruction, resurfacing, and capacity increase projects, to the extent deemed safe and feasible. To this end, RPC has been proactive in implementing planning and construction efforts aimed at providing a safe and enjoyable environment for non-motorized transportation activities. As a policy, RPC has and will continue to work with various stakeholders to implement these important projects.

The metropolitan transportation plan calls for a number of pedestrian and bicycle improvements by way of the STP Enhancement Program, and supplemented with STP<200K (urbanized attributable) funding where necessary. These include sidewalk improvements in downtown areas of the municipalities and along the Tammany Trace.

# **SAFETY AND SECURITY**

Pursuant to new planning guidelines promulgated in SAFETEA-LU legislation, Safety and Security are distinct planning factors for MPO's to consider in the planning process. Traditionally, safety issues were inherently related to automobile and vehicular safety, and special funding categories were developed for Hazard Elimination (STP HAZ) in Federal Highway Administration programs. Since 9/11/ 2001, and locally, since August 29, 2005, safety and security have come to mean more than merely improving traffic conditions for automobiles.

In response, St. Tammany has initiated several ITS surveillance programs that aim to detect hazards and problems. The transit program for St. Tammany allocates funding nearly every year for the first three years for surveillance cameras at parish owned park and ride locations. The cameras will be monitored by local law enforcement agencies. In times of emergency, the cameras will also be used for monitoring adjacent highway conditions, and will be monitored by local Emergency Management personnel as well.

St. Tammany is also embarking on water detection on highways, and using predictive modeling to proactively determine when detours should be established on routes prone to flooding.



# **PUBLIC INVOLVEMENT PLAN**

---

Citizen participation has been encouraged throughout the formulation of the MTP and Transportation Improvement Program. Public input has been sought in the development of the Plan through meetings with local officials, business and civic leaders, transit providers, elderly and handicapped advocacy groups, minority business, and neighborhood organizations. The RPC has made use of local newspapers to inform citizens of important regional projects and to promote alternative transportation modes, including walking, bicycle, transit and vanpooling efforts.

Copies of the Draft MTP were placed at governmental offices and libraries throughout St. Tammany, including the St. Tammany Parish Planning and Development Office, the Slidell Public Library, and the St. Tammany Parish Library in Mandeville. The Draft MTP has also been available on the internet at the Regional Planning Commission's website: [www.norpc.org](http://www.norpc.org). Prior to adoption of the MTP, a minimum of 30 days is provided for citizen review, input and comment. The public is also afforded the opportunity to express their comments directly to the Transportation Policy Committee on the MTP document prior to official action.

Citizens, affected public agencies, private transportation providers, and other interested parties are invited to review and comment on the document. The draft MTP was made available for download from the RPC website on May 9, 2006. Public notices for the public hearing on the plan were advertised in the local edition of the metro area newspaper, and the newspaper of record for St. Tammany Parish. Said advertisements were run twice within the ten day period in accordance with the RPC's public involvement plan and policies. RPC received final endorsement of the plan by Commission resolution on November 14, 2006.

Comments and questions should be directed to the attention of:

Mr. Walter Brooks  
Executive Director  
Regional Planning Commission  
1340 Poydras Street, Suite 2100  
New Orleans, LA 70112  
Telephone: 504-568-6611  
Fax: 504-568-6643  
E-mail: [rpc@norpc.org](mailto:rpc@norpc.org)

---

# PLAN DEVELOPMENT

*with Regard to the Eight Planning Factors Identified in  
the Safe, Accountable, Flexible, Efficient Transportation Equity Act,  
a Legacy for Users (SAFETEA-LU)*

---

The Regional Planning Commission is the designated Metropolitan Planning Organization (MPO) for the East St. Tammany/Slidell Urbanized Area. As such, the MPO is mandated to consider projects and strategies that will:

- a) support the economic vitality of the United States and metropolitan areas, especially by enabling global competitiveness, productivity, and efficiency;
  - b) increase the safety of the transportation system for motorized and non-motorized users;
  - c) increase the security of the transportation system for motorized and non-motorized users
  - d) increase the accessibility and mobility options available to people and for freight;
  - e) protect and enhance the environment, promote energy conservation, and improve quality of life;
  - f) enhance the integration and connectivity of the transportation system, across and between modes, for people and freight;
  - g) promote efficient transportation system management and operation; and
  - h) emphasize the preservation of the existing transportation system.
-

# LADOTD HIGHWAY PROJECT PRIORITIZATION PROCESS

---

In 1998, LADOTD Secretary Dr. Kam K. Movassaghi appointed a task force to review the process employed by LADOTD for the identification, prioritization, and selection of highway projects. As a result of this review, a task force assembled for this purpose promulgated recommendations to streamline and simplify the selection process. The task force recommended the partitioning of the state maintained highway network into three subcategories:

1. National Highway System
2. Statewide Highway System, and
3. Regional Highway System

Additionally, it was determined that the existing highway budget be partitioned to address different types of projects independently of one another. The four project categories are:

1. System Preservation
2. Traffic Safety
3. Additional Capacity/New Infrastructure
4. Operations/Motorist Assistance

The goal was to allow appropriate budgetary allocations for each system that could be undertaken without disparate projects “competing” against each other for limited dollars. LADOTD then assigned performance indicators to each of the system / project categories in order to provide a rational basis for resource allocation for assets in the state highway system while maintaining the overall goal of fiscal constraint.

Highway projects in the State Improvement Program (STIP) are now differentiated by project type. The following illustrates the types of projects that fall into the above mentioned funding categories:

## **System Preservation**

*Activities include:*

- ▶ Pavement Preservation
- ▶ Bridge Preservation
- ▶ Preventive Maintenance
- ▶ Routine Maintenance
- ▶ Overlay
- ▶ Reconstruction

## **Capacity Enhancement**

*Activities include:*

- ▶ Adding Lanes
- ▶ New Alignment
- ▶ Intersection Improvement
- ▶ Limiting Access

## **Safety Improvement**

*Activities include:*

- ▶ Hazard Elimination
- ▶ Shoulder Repair
- ▶ Realignment
- ▶ New Overpass

## **Operations/ Motorist Assistance**

*Activities include:*

- ▶ ITS/ Signalization Activities
- ▶ HOV Lanes
- ▶ Motorist Assistance Patrols

Correspondingly, the MTP for the St. Tammany Urbanized Areas has also categorized projects using LADOTD's criteria. Additionally, Transportation Enhancement and Transit projects are categorized using criteria similar to those developed for highway projects.

# SLIDELL/ EAST ST. TAMMANY URBANIZED AREA

Figure 1 shows the Slidell/ East St. Tammany Urbanized Area, in the context of the 20 year planning horizon for the area. Figure 2 shows the functional class network of roadways that provide mobility in the area.

The urbanized area was defined pursuant to the 2000 census urbanized area criteria and geography. The 20 year planning horizon was defined in consultation with area stakeholders including St. Tammany Parish directors of Public Works and Planning/ Permitting, and is consistent with development policies promulgated from St. Tammany's *New Directions 2025* comprehensive planning effort.

Population growth trends in the parish indicate that the urbanized areas of Mandeville-Covington and Slidell-East St. Tammany will likely merge by the next decennial census in 2010. Therefore, the 20 year planning area for this area reflects a somewhat arbitrary east-west midpoint of the parish, in this case the eastern boundary of Fountainsbleu State Park, thence northward following the wardline between parish wards four and seven, and wards ten and six. The northern boundary of urbanized growth continues to be roughly bounded by LA 36, with a small portion north of LA 36 for the purpose of geographic cohesion east to the Mississippi State line. The southern boundary remains Lake Pontchartrain.

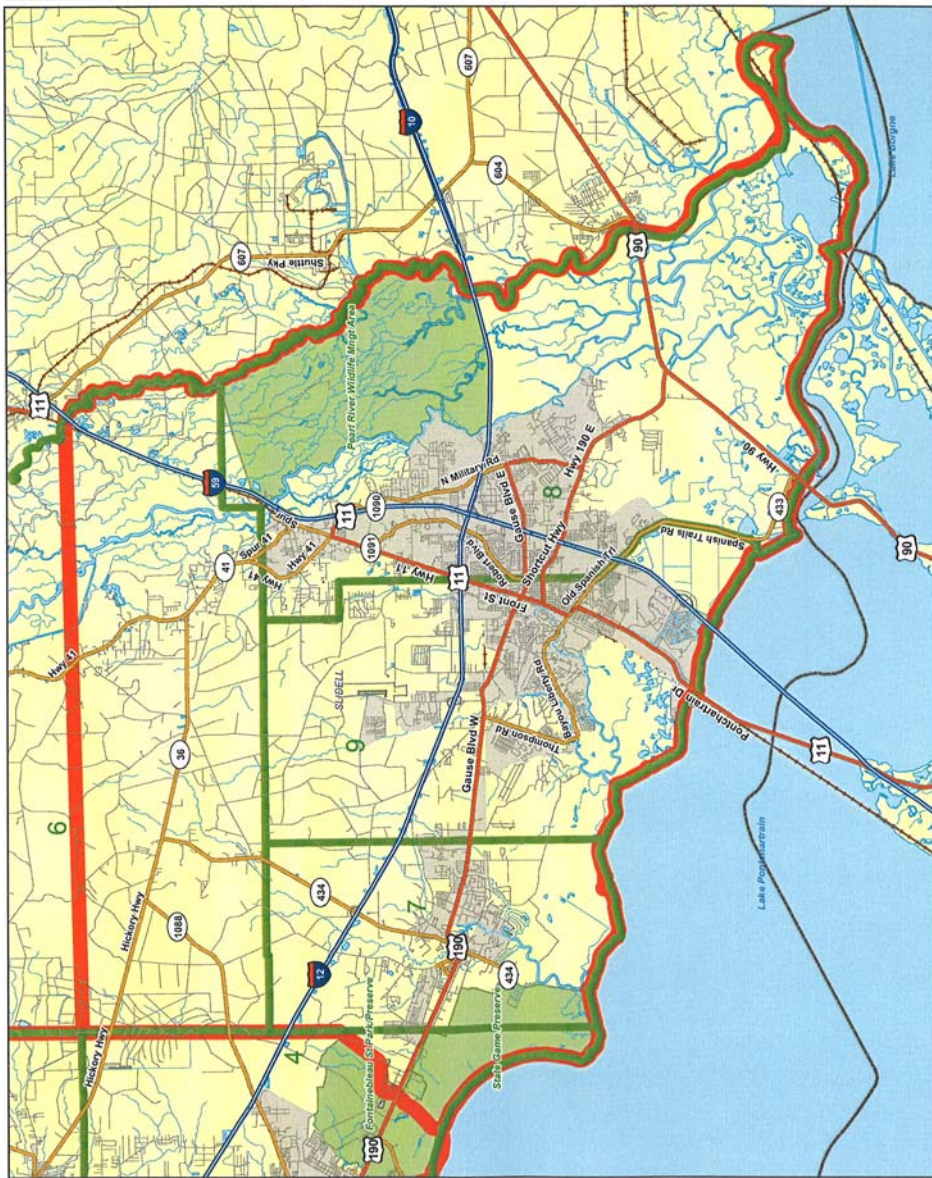
**Figure 1**  
**Slidell/Lacombe**  
**Wards, Urbanized Areas**  
**and Study Area Map**

Prepared by  
 Regional Planning Commission  
 7-22-2005

**Legend**

- Wards 2000
- Urban Area
- Study Area

0 2.5 5 Miles



**Figure 2**  
**Slidell/Lacombe**  
**Highway Function Class**  
**Urbanized Areas**  
**and Study Area Map**

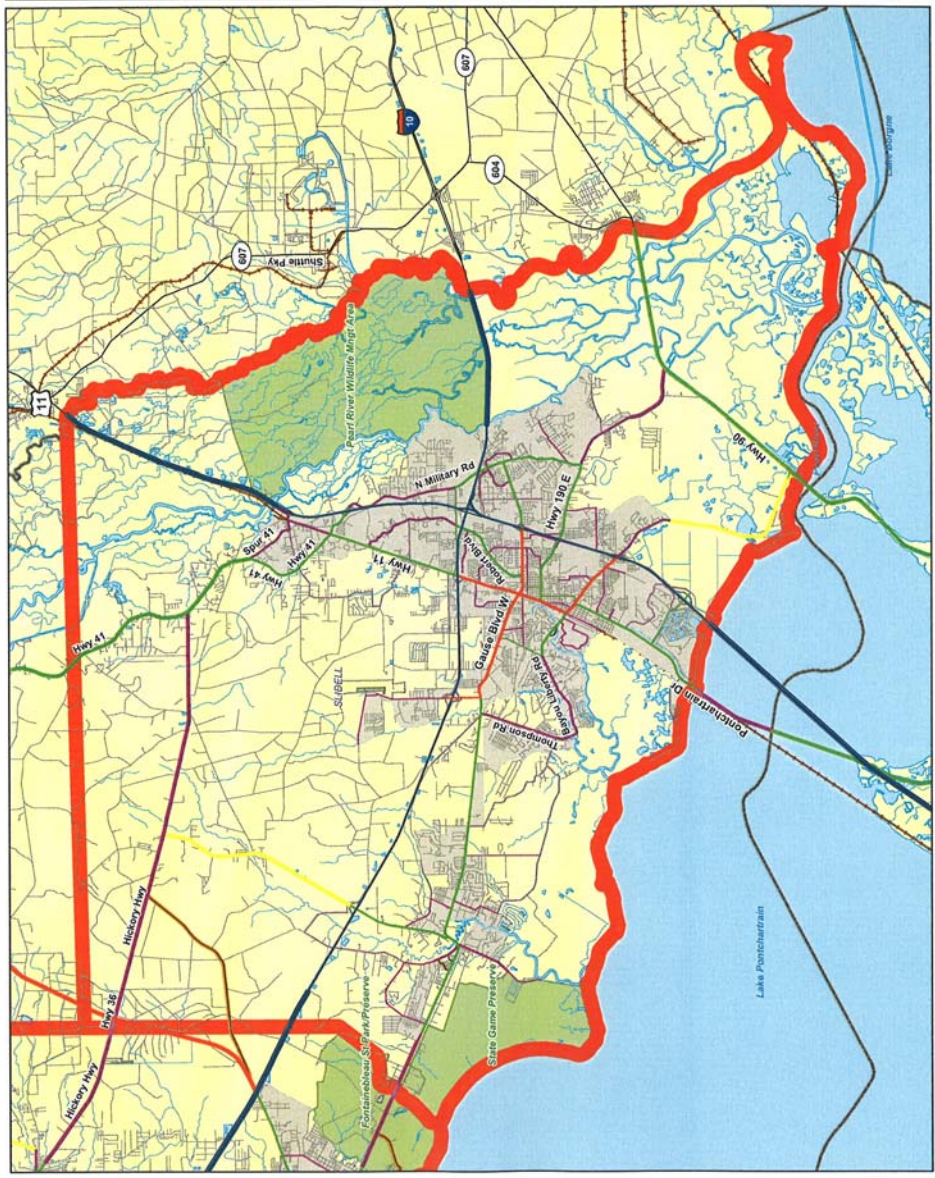
Prepared by  
 Regional Planning Commission  
 7-22-2005

**Legend**

Urban Area  
 Study Area

**FUNCTION CLASS**

- Rural Principal Arterial - Interstates
- Urban Principal Arterial - Interstates
- Urban Principal Arterial - Freeways & Expressways
- Rural Principal Arterial - State Highways
- Urban Principal Arterial - State Highways
- Rural Minor Arterial - State Highways
- Urban Minor Arterial - State Highways
- Rural Major Collector - State Highways
- Urban Collector
- Rural Minor Collector - State Highways
- Rural Local Roads
- Urban Local Roads



# MANDEVILLE/COVINGTON URBANIZED AREA

Figure 3 shows the Slidell/ East St. Tammany Urbanized Area, in the context of the 20 year planning horizon for the area. Figure 4 shows the functional class network of roadways that provide mobility in the area.

The urbanized area was defined pursuant to the 2000 census urbanized area criteria and geography. The 20 year planning horizon was defined in consultation with area stakeholders including St. Tammany Parish directors of Public Works and Planning/ Permitting, and is consistent with development policies promulgated from St. Tammany's *New Directions 2025* comprehensive planning effort.

Population growth trends in the parish indicate that the urbanized areas of Mandeville-Covington and Slidell-East St. Tammany will likely merge by the next decennial census in 2010. Therefore, the 20 year planning area for this area reflects a somewhat arbitrary east-west midpoint of the parish, in this case the eastern boundary of Fountainsbleu State Park, thence northward following the wardline between parish wards four and seven, and wards ten and six. The northern boundary of urbanized growth continues to be just north of Abita Springs to the Tangipahoa Parish line. The southern boundary remains Lake Pontchartrain.

---





# GLOSSARY OF ACRONYMS AND TERMS

---

**ADA** *Americans With Disabilities*

*Act:* Federal civil rights legislation for disabled persons passed in 1990; calls on public transit systems to make their services more fully accessible, as well as to underwrite a parallel network of paratransit service.

**Conformity:** A process in which transportation plans and spending programs are reviewed to ensure that they are consistent with federal clean air requirements; transportation projects collectively must not worsen air quality.

**Fund Source:** Identifies the most likely source of funds to be used to actually implement the project phase. Fund sources include: STB= State Bonds; OLY = State Overlay; STP = Surface Transportation Program; NHS = National Highway System; FBR = Federal Bridge Replacement.

**Intermodal:** The term “mode” is used to refer to and to distinguish from each other the various forms of transportation, such as automobile, transit, ship, bicycle and walking. Intermodal refers specifically to the connections between modes.

**ISTEA** *Intermodal Surface Transportation Efficiency Act:* Pronounced “Ice Tea,” this landmark federal legislation signed into law in 1991 made broad

changes in the way transportation decisions are made. ISTEA emphasized diversity and balance of modes, as well as the preservation of existing systems before construction of new facilities. ISTEA expired in 1997, but much of its program structure is carried forward in new federal legislation (See TEA 21).

**MPO** *Metropolitan Planning Organization:* A federally required planning body responsible for the transportation planning and project selection in its region; the governor designated an MPO in every urbanized area with a population of over 50,000 people.

**MTP** *Metropolitan Transportation Plan:* A document prepared every five years which contains a priority list of projects and project segments that are being advanced towards implementation over the next twenty years. Tier I consists of the projects in the TIP.

**Multimodal:** Refers to the availability of multiple transportation options, especially within a system of or corridor. A multimodal approach to transportation planning focuses on the most efficient way of getting people or goods from place to place, be it by truck, train, bicycle, automobile, airplane, bus boat, foot or even a computer modem.

**NHS** *National Highway System:* This approximately 160,000-mile network consists of the 42,500 miles of the Interstate system, plus

other key roads and arterials throughout the United States. Designated by Congress in 1995 pursuant to a requirement of the Intermodal surface Transportation Efficiency Act, the NHS is designated to provide an interconnected system of principal routes to serve major travel destinations and population centers.

**Phase:** Shows the particular project phase to be advanced: R/W = right-of-way study; C = construction; E = final design and engineering; OLY = overlay project; U = utility work; SDY = technical study.

**RPC** *Regional Planning Commission for Jefferson, Orleans, Plaquemines, St. Bernard and St. Tammany Parishes:* The transportation planning, financing and coordinating agency for the 5-parish area.

**State Project Number:** Denotes official number assigned to a project for a particular phase of work such as engineering, right-of-way or construction.

**STP** *Surface Transportation Program:* One of the key funding programs in TEA-21. STP monies are “flexible,” meaning they can be spent on mass transit, pedestrian and bicycle facilities as well as on roads and highways.

**TEA 21** *Transportation Equity Act for the 21<sup>st</sup> Century:* Passed by Congress in May 1998, this federal transportation legislation retains and expands many of the programs created in 1991 under ISTEA. Reauthorizes federal surface transportation programs for six years (1998-2003), and significantly increases overall funding for transportation.

**TIP** *Transportation Improvement Program:* This is the primary spending plan for federal funding expected to flow to the region from all sources for transportation projects of all types. The RPC prepares with TIP every two years with the assistance of LaDOTD, local governments and transit operators. It covers at least a three-year period.

**U.S. DOT** *United States Department of Transportation:* The federal cabinet level agency with responsibility for highways, mass transit, aviation and ports; headed by the secretary of transportation. The DOT includes the Federal Highway Administration and the Federal Transit Administration, among others.

**Metropolitan Transportation Plan - St. Tammany Urbanized Areas**  
**Highway Element - Financially Constrained**

Fiscal Year	State Project No.	Project Description	Proposed Improvement	Project Category	Work Phase	Total Cost	Federal Share	Funding Source	Funding Amount	Planning Element
<b>2006</b>	454-04-0071	I-12 (US 190 - LA 434)	Cold Plane & Overlay	HP	C	\$7,826,000	\$7,043,400	IM	\$7,400,000	Sys Pres.
	450-18-0105	I-10 Bridge over Lake Pontchartrain	New Bridge	ER	C	\$240,810,000	\$240,810,000	FHWA-ER	\$240,810,000	Emerg. Relief
	744-52-0033	Mandeville Entry Signs	Signage	HE	C	\$97,000	\$92,150	STPENH	\$92,150	Enh
	018-03-0026	US 11 (LA 433 - CSLM 5.64)	Overlay	HP	C	\$400,000	\$320,000	STPFLEX	\$320,000	Sys. Pres.
	852-21-0024	LA 433 (Bayou Liberty Bridge)	Bridge Replacement	HP	C	\$4,458,000	\$3,566,400	FBRON	\$3,566,400	Sys. Pres.
	453-01-0053	I-59 Pavement Marking Replacement	New Pavement Markings	HP	C	\$331,000	\$298,000	IM	\$298,000	Sys. Pres.
	280-02-0013	LA 36 @ LA 59 Abita Springs	Intersection Improvements	HO	C	\$300,000	\$240,000	STPFLEX	\$240,000	OPS/ Safety
	744-52-0021	Tammany Trace Ext. to Pelican Park	New Asphalt Path	HE	C	\$235,000	\$188,000	STPENH	\$188,000	Enh
	018-03-0025	US 11 (Lake Pont Bridge - CSLM 2.7)	Overlay	HP	C	\$750,000	\$475,200	STPFLEX	\$475,200	Sys. Pres
	454-04-0068	I-12 @ LA 1088	Clear & Grubbing	HC	C	\$3,000,000	\$2,400,000	DEMO	\$2,400,000	Capacity
	013-12-0050	US 190 (Bayou Castine - LA 433)	Overlay	HP	C	\$3,130,000	\$2,504,000	STP<200K	\$2,504,000	Preservation
		LA 21 Signal Pre-emption	Signal Improvement	HO	C	\$150,000		Local		I/S Plan
	001-06-REST	Interstate Maintenance	Parishwide	HC	C	\$500,000	\$400,00	IM	\$400,000	Annual Allocation
	001-06-NHOL	NHS Overlays	Parishwide	HC	C	\$1,000,000	\$800,000	NHS	\$800,000	Annual Allocation
	001-06-OLAY	STP Overlays	Parishwide	HC	C	\$2,00,000	\$1,600,000	STP	\$1,600,000	Annual Allocation
	001-06-PVMT	Preventive Maintenance	Parishwide	HC	C	\$100,000	\$80,000	STP	\$80,000	Annual Allocation
	001-06-ENH	Enhancements	Parishwide	HE	C	\$200,000	\$160,000	STP ENH	\$160,000	Annual Allocation
	001-06-HAZ	Misc. Hazardous Elimination	Parishwide	HC	C	\$150,000	\$120,000	STP HAZ	\$120,000	Annual Allocation
	001-06-RR01	RR Xing Safety	Parishwide	HC	C	\$500,000	\$400,000	STP HAZ	\$400,000	Annual Allocation
	737-06-ATTN	Crash Allenuator Repairs	Parishwide	HC	C	\$20,000	\$16,000	STP HAZ	\$16,000	Annual Allocation

**Metropolitan Transportation Plan - St. Tammany Urbanized Areas**  
**Highway Element - Financially Constrained**

Fiscal Year	State Project No.	Project Description	Proposed Improvement	Project Category	Work Phase	Total Cost	Federal Share	Funding Source	Funding Amount	Planning Element	
<b>2007</b>	454-04-A	I-12 (Tang. PL - US 190)	Overlay	HP	C	\$5,000,000	\$4,500,000	IM	\$4,500,000	Sys. Pres.	
	059-01-0022	LA 21 Madisonville Sidewalk Rehab.	Sidewalk Rehab.	HE	C	\$281,000	\$267,000	STPENH	\$267,000	ENH	
	283-03-0022	LA 59 (Widen to 4 lanes at I-12)	Minor Widen	HO	C	\$1,000,000	\$800,000	STP<200K	\$800,000		
	690-03-0003	Slidell Tourist & Rest Area Upgrade	Rest Area Renovation	HP	C	\$6,700,000	\$6,030,000	IM	\$6,030,000	Sys. Pres.	
	690-01-0004	I-59 Slidell Rest Area (west side)	Tie Sewer & Water into Parish	HP	C	\$170,000	\$153,000	IM	\$153,000	Maintenance	
	852-12-0014	LA 434 (Little Dixie Ranch Rd. to LA 36)	Overlay	HP	C	\$2,000,000	\$1,600,000	STP<200K	\$1,600,000	Sys. Pres.	
	742-52-0010	Brewster Rd. (LA 21 to LA 1077)	Minor Widen and Upgrade	HC/HO	C	\$2,000,000	\$1,600,000	STP<200K	\$1,360,000	Master Plan	
			Bayou Lacombe Bridge Renovation	Enhancement	ENH	C	\$300,000	\$240,000	STP<200K	\$240,000	Enh
			LA 1077 (I-12 to LA 1085)	Widen to Four Lanes	HC	C	\$2,000,000	\$1,600,000	Adv. Const.	\$5,000,000	Advance Const.
			LA 1077 @ LA 1085	Intersection Improvements	HO	C	\$2,000,000	\$1,600,000	Adv. Const.	\$2,000,000	Advance Const.
			LA 1077 @ I-12	Interchange Operational Improve.	HO	C	\$2,000,000	\$1,600,000	Adv. Const.	\$2,000,000	Advance Const.
			LA 21 (LA 1085 to 11th Street)	Widen to Four Lanes	HC	E	\$630,000	\$504,000	Adv. Const.	\$630,000	Advance Const.
			LA 22 (Tchefuncte Rv. - Causeway Appr.)	Interim Widening	HC	C	\$2,000,000	\$1,600,000	Adv. Const.	\$2,000,000	Advance Const.
	018-04C	US 11 (CSLM 2.56 - Pearl River)	Overlay	HP	C	\$1,500,000	\$1,200,000	STP<5K	\$1,200,000		
	742-52D	I-10 Southwest Service Rd. Extension	New 2 Lane	HC	C	\$12,000,000	\$9,600,000	Adv. Const.	\$9,600,000	Advance Const.	
	453-01-0054	I-59 Signing (LA 41 -Miss State Line)	Interstate Signing	HS	C	\$720,000	\$648,000	IM	\$648,000	Sys. Pres	
	018-30-0021	LA 433 @ Salt Bayou	Raise Grade	HP/HS	C	\$375,000		Oth. /Safety			
	001-07-REST	Interstate Maintenance	Parishwide	HC	C	\$500,000	\$400,00	IM	\$400,000	Annual Allocation	
	001-07-NHOL	NHS Overlays	Parishwide	HC	C	\$1,000,000	\$800,000	NHS	\$800,000	Annual Allocation	
	001-07-OLAY	STP Overlays	Parishwide	HC	C	\$2,00,000	\$1,600,000	STP	\$1,600,000	Annual Allocation	
	001-07-PVMT	Preventive Maintenance	Parishwide	HC	C	\$100,000	\$80,000	STP	\$80,000	Annual Allocation	
	001-07-ENH	Enhancements	Parishwide	HE	C	\$200,000	\$160,000	STP ENH	\$160,000	Annual Allocation	
	001-07-HAZ	Misc. Hazardous Elimination	Parishwide	HC	C	\$150,000	\$120,000	STP HAZ	\$120,000	Annual Allocation	
	001-07-RR01	RR Xing Safety	Parishwide	HC	C	\$500,000	\$400,000	STP HAZ	\$400,000	Annual Allocation	
737-07-ATTN	Crash Allenuator Repairs	Parishwide	HC	C	\$20,000	\$16,000	STP HAZ	\$16,000	Annual Allocation		

**Metropolitan Transportation Plan - St. Tammany Urbanized Areas  
Highway Element - Financially Constrained**

Fiscal Year	State Project No.	Project Description	Proposed Improvement	Project Category	Work Phase	Total Cost	Federal Share	Funding Source	Funding Amount	Planning Element
<b>2008</b>	281-04-0021	LA 435 Bridges	Bridge Replacement	HP	C	\$2,227,000	\$1,781,600	FBR	\$1,781,600	Sys. Pres.
	059-01	LA 21 (LA 1085 to 11th Street)	Widen to four lanes	HC	C	\$8,400,000	\$6,720,000	DEMO Local	\$4,250,000 \$4,150,000	Advance Const.
	852-01-0004	LA 437 (LA 40 - LA 16)	Overlay	HP	C	\$2,500,000	\$2,000,000	STPFLEX	\$2,000,000	Sys. Pres.
	058-01A	LA 41 (Pave Shoulders)	Pave Shoulders	HS	C	\$371,000	\$296,800	STPHAZ	\$296,800	Safety
	018-	US 11 @ I-12	Interchange Improvements	HO	C	\$4,000,000	\$3,200,000	Local	\$4,000,000	Advance Const.
	261-06-0030	LA 22 (Tchefuncte Rv - Causeway Appr)	Widen to 4 Lanes	HC	C	\$16,000,000	\$12,800,000	Local	\$12,000,000	Advance Const.
	454-04-0038	I-12 @ LA 1088	New Interchange	HC	C	\$16,310,000	\$13,048,000	DEMO	\$13,048,000	Master Plan
	013-11B	US 190 (LA 22 - I-12)	Overlay	HP	C	\$1,200,000	\$960,000	STP<200K	\$960,000	Sys. Pres.
	013-13-0030	US 190 Bridges near Slidell	Bridge Replacement	HP	C	\$1,080,000	\$864,000	FBR		Sys. Pres.
	852-33-0002	LA 3241 (I-12 to LA 36)	New 4 Lane	HC	C	\$22,385,000		TIMED		Capacity
	852-33-0003	LA 3241 (LA 36 - LA 435)	New 4 Lane	HC	C	\$38,840,000		TIMED		Capacity
			Reimbursement for Advance Construction FY 07			\$5,800,000				
	001-08-REST	Interstate Maintenance	Parishwide		HC	\$500,000	\$400,000	IM	\$400,000	Annual Allocation
	001-08-NHOL	NHS Overlays	Parishwide		HC	\$1,000,000	\$800,000	NHS	\$800,000	Annual Allocation
	001-08-OLAY	STP Overlays	Parishwide		HC	\$2,000,000	\$1,600,000	STP	\$1,600,000	Annual Allocation
	001-08-PVMT	Preventive Maintenance	Parishwide		HC	\$100,000	\$80,000	STP	\$80,000	Annual Allocation
	001-08-ENH	Enhancements	Parishwide		HE	\$200,000	\$160,000	STP ENH	\$160,000	Annual Allocation
	001-08-HAZ	Misc. Hazardous Elimination	Parishwide		HC	\$150,000	\$120,000	STP HAZ	\$120,000	Annual Allocation
	001-08-RR01	RR Xing Safety	Parishwide		HC	\$500,000	\$400,000	STP HAZ	\$400,000	Annual Allocation
	737-08-ATTN	Crash Allenuator Repairs	Parishwide		HC	\$20,000	\$16,000	STP HAZ	\$16,000	Annual Allocation

**Metropolitan Transportation Plan - St. Tammany Urbanized Areas  
Highway Element - Financially Constrained**

Fiscal Year	State Project No.	Project Description	Proposed Improvement	Project Category	Work Phase	Total Cost	Federal Share	Funding Source	Funding Amount	Planning Element
<b>2009</b>	058-01	LA 41 (Pearl River)	3-Lane	HS	C	\$1,200,000	\$960,000	STPHAZ	\$960,000	Safety
		Brewster Rd., Ph. 2 (LA 1077-LA 1085)	Upgrade & Widen	HC	C	\$2,400,000	\$1,920,000	STP<200K	\$1,920,000	Master Plan
	742-52H	Mandeville Intersection Improvements	Intersection Improvements	HP	C	\$300,000	\$240,000	STP<200K	\$240,000	Sys. Pres.
	852-01	LA 437 (LA 40 to Local Road)	Overlay	HP	C	\$1,080,000	\$864,000	STPFLEX	\$864,000	Sys. Pres.
		Lk. Pont. Causeway, Crossover 4	Safety Improvement	HS	C	\$1,000,000	\$800,000	DEMO	\$800,000	
	454-04-0070	I-12 (US 11 LA 1091) Noise Barrier	Noise Barrier Replacement	HP	C	\$435,000	\$348,000	DEMO	\$348,000	Sys Pres
	852-33-0001	LA 3241 (Talisheek - Bush)	New 4 Lane	HC	C	\$37,450,000		TIMED		Capacity
		I-12 Tchefuncte Rest Area	Convert to Interchange	HC	C	\$2,500,000	\$2,000,000	Local	\$2,000,000	Capacity
	742-52G	Parishwide Traffic Signal Upgrade	Replace Signals	HP	C	\$600,000	\$600,000	STP<200K	\$600,000	Sys. Pres.
	006-08-0031	US 90 (East Pearl River Bridge)	Bridge Replacement	HP	C	\$15,000,000	\$12,000,000	FBRON	\$12,000,000	Sys. Pres.
		Reimbursement for Advance	FY 08			\$7,000,000				
	001-09-REST	Interstate Maintenance	Parishwide		HC	\$500,000	\$400,000	IM	\$400,000	Annual Allocation
	001-09-NHOL	NHS Overlays	Parishwide		HC	\$1,000,000	\$800,000	NHS	\$800,000	Annual Allocation
	001-09-OLAY	STP Overlays	Parishwide		HC	\$2,000,000	\$1,600,000	STP	\$1,600,000	Annual Allocation
	001-09-PVMT	Preventive Maintenance	Parishwide		HC	\$100,000	\$80,000	STP	\$80,000	Annual Allocation
	001-09-ENH	Enhancements	Parishwide		HE	\$200,000	\$160,000	STP ENH	\$160,000	Annual Allocation
	001-09-HAZ	Misc. Hazardous Elimination	Parishwide		HC	\$150,000	\$120,000	STP HAZ	\$120,000	Annual Allocation
	001-09-RR01	RR Xing Safety	Parishwide		HC	\$500,000	\$400,000	STP HAZ	\$400,000	Annual Allocation
737-09-ATTN	Crash Allenuator Repairs	Parishwide		HC	\$20,000	\$16,000	STP HAZ	\$16,000	Annual Allocation	

**Metropolitan Transportation Plan - St. Tammany Urbanized Areas  
Highway Element - Financially Constrained**

Fiscal Year	State Project No.	Project Description	Proposed Improvement	Project Category	Work Phase	Total Cost	Federal Share	Funding Source	Funding Amount	Planning Element
<b>2010</b>	454-04B	LA 3241 @ I-12	New Interchange	HC	C	\$12,500,000		TIMED		Capacity
	450-18A	I-10 (Frem. I/C - W. Pearl River Bridge)	Rubbleize and Overlay	HP	C	\$12,000,000	\$10,800,000	IM	\$10,800,000	Sys. Pres.
		I-12 at Northshore Boulevard	Interchange Modification and Roadway TSM Improvements	HO	C	\$11,000,000	\$8,800,000	STPFLEX STP<200K	\$3,960,000 \$4,840,000	Capacity
	852-21-0030	LA 433 (2 Lane Reconstruction)	Reconstruction	HP	C	\$11,000,000	\$8,800,000	STPHAZ	\$8,800,000	Safety
	013-13B	US 190 @ Military Rd.	Pave Shoulders	HP/HS	C	\$200,000	\$160,000	STP<200K	\$160,000	Safety/Bike
		Reimbursement for Advance Construction	FY 09			\$7,000,000				
	001-10-REST	Interstate Maintenance	Parishwide		HC	\$500,000	\$400,000	IM	\$400,000	Annual Allocation
	001-10-NHOL	NHS Overlays	Parishwide		HC	\$1,000,000	\$800,000	NHS	\$800,000	Annual Allocation
	001-10-OLAY	STP Overlays	Parishwide		HC	\$2,000,000	\$1,600,000	STP	\$1,600,000	Annual Allocation
	001-10-PVMT	Preventive Maintenance	Parishwide		HC	\$100,000	\$80,000	STP	\$80,000	Annual Allocation
	001-10-ENH	Enhancements	Parishwide		HE	\$200,000	\$160,000	STP ENH	\$160,000	Annual Allocation
	001-10-HAZ	Misc. Hazardous Elimination	Parishwide		HC	\$150,000	\$120,000	STP HAZ	\$120,000	Annual Allocation
	001-10-RR01	RR Xing Safety	Parishwide		HC	\$500,000	\$400,000	STP HAZ	\$400,000	Annual Allocation
	737-10-ATTN	Crash Allenuator Repairs	Parishwide		HC	\$20,000	\$16,000	STP HAZ	\$16,000	Annual Allocation

**Metropolitan Transportation Plan - St. Tammany Urbanized Areas  
Highway Element - Financially Constrained**

Fiscal Year	State Project No.	Project Description	Proposed Improvement	Project Category	Work Phase	Total Cost	Federal Share	Funding Source	Funding Amount	Planning Element
<b>20011-15</b>	<b>Tier 2 - On System - Funded Projects</b>									
	852-17	LA 1084 (LA 21 - LA 1083)	Overlay	HP	C	\$370,000		State Cash		Preservation
	690-03-0008	I-10 Slidell Rest Area (West Side)	Tie Sewer & Water into Parish	HP	C	\$170,000	\$153,000	IM	\$153,000	Maintenance
		Interstate Maintenance	Parishwide		HC	\$2,500,000	\$1,140,000	IM		Annual Allocation
		NHS Overlays	Parishwide		HC	\$5,000,000	\$4,000,000	NHS		Annual Allocation
		STP Overlays	Parishwide		HC	\$10,000,000	\$8,000,000	STP		Annual Allocation
		Preventive Maintenance	Parishwide		HC	\$500,000	\$400,000	STP		Annual Allocation
		Enhancements	Parishwide		HE	\$1,200,000	\$1,140,000	STP ENH		Annual Allocation
		Misc. Hazardous Elimination	Parishwide		HC	\$750,000	\$600,000	STP HAZ		Annual Allocation
		RR Xing Safety	Parishwide		HC	\$2,500,000	\$2,000,000	STP HAZ		Annual Allocation
		Crash Allenuator Repairs	Parishwide		HC	\$100,000	\$80,000	STP HAZ		Annual Allocation
		Reimbursement for Advance Construction				\$7,000,000				
		Reimbursement for Advance Construction				\$7,000,000				
		Reimbursement for Advance Construction				\$5,580,000				
		<b>Tier 2 - On System - Unfunded Projects</b>								
	013-12-0031	US 190 (LA 433 - US 11)	Widen to 4 Lanes	HC	C	\$20,379,000	\$16,303,200		\$16,303,200	Capacity Allowance
	018-04	US 11 (I-12 to US 190)	Reconstruction and Add Lanes	HC	C	\$20,000,000	\$16,000,000	NHS	\$16,000,000	Capacity
	013-12-0041	US 190 (LA 22 - Little Bayou Castain)	5 Laning of 3 Lane Section	HC	C	\$12,000,000	\$9,600,000	STPFLEX	\$8,800,000	Capacity

**Metropolitan Transportation Plan - St. Tammany Urbanized Areas**  
**Highway Element - Financially Constrained**

Fiscal Year	State Project No.	Project Description	Proposed Improvement	Project Category	Work Phase	Total Cost	Federal Share	Funding Source	Funding Amount	Planning Element	
<b>2016-31</b>	<b>Tier 3 - On System - Funded Projects</b>										
		Interstate Maintenance	Parishwide		HC	\$8,000,000	\$7,200,000	IM		Annual Allocation	
		NHS Overlays	Parishwide		HC	\$16,000,000	\$12,800,000	NHS		Annual Allocation	
		STP Overlays	Parishwide		HC	\$32,000,000	\$25,600,000	STP		Annual Allocation	
		Preventive Maintenance	Parishwide		HC	\$1,600,000	\$1,280,000	STP		Annual Allocation	
		Enhancements	Parishwide		HE	\$3,200,000	\$3,040,000	STP ENH		Annual Allocation	
		Misc. Hazardous Elimination	Parishwide		HC	\$2,400,000	\$1,920,000	STP HAZ		Annual Allocation	
		RR Xing Safety	Parishwide		HC	\$8,000,000	\$6,400,000	STP HAZ		Annual Allocation	
		Crash Allenuator Repairs	Parishwide		HC	\$320,000	\$256,000	STP HAZ		Annual Allocation	
		<b>Tier 3 - On System - Unfunded Capacity Projects</b>									
		013-12-0039	US 190 (Bayou Castain - SELA Hosp.)	Widen to 4 Lanes	HC	C	\$6,000,000	\$4,800,000		\$4,800,000	Capacity Allowance
		280-01	LA 36 (Jct. 21 - Jct. LA 59)	Widen to 4 Lanes	HC	C	\$15,000,000	\$12,000,000		\$12,000,000	Capacity Allowance
		059-30-0008	US 190 (Jct. LA 25 - Jct. US 190B) Claiborne Hills	Widening	HC	C	\$12,000,000	\$9,600,000	STP FLEX STP<200K	\$4,800,000 \$4,800,000	Capacity Allowance Annual Allocation
			US 190B (I-10 to LA 1090)	Widen to 4 Lanes	HC	C	\$15,000,000	\$12,000,000	STPFLEX STP<200K	\$9,600,000 \$2,400,000	Capacity Allowance Annual Allocation
			LA 59 (US 190 to I-12)	Widen to 4 Lanes	HC	C	\$18,000,000	\$14,400,000		\$14,400,000	Capacity Allowance
		LA 59 (I-12 to LA 36)	Widen to 5 Lanes	HC	C	\$15,000,000	\$12,000,000		\$12,000,000	Capacity Allowance	
		US 190 (I-12 to LA 25)	Cont. Access with Service Roads	HC	C	\$40,000,000	\$32,000,000		\$32,000,000	Capacity	

**Metropolitan Transportation Plan - St. Tammany Urbanized Areas**  
**Highway Element - Financially Constrained**

Fiscal Year	State Project No.	Project Description	Proposed Improvement	Project Category	Work Phase	Total Cost	Federal Share	Funding Source	Funding Amount	Planning Element
	<b>Unfunded Capacity Projects (continued)</b>									
		US 11 (Slidell C/L to Lake Pont. Bridge)	Widen to 4 Lanes	HC	C	\$10,000,000	\$8,000,000		\$800,000	Evac. Route/Cap.
		I-12 (I-10 to LA 445)	Widen to 6 Lanes	HC	C	\$600,000,000				Evac. Route/Cap.
		Widen Causeway Bridge	Widen to 6 Lanes	HC	C	\$600,000,000		Local		Evac. Route/Cap.
		US 11 (Lake Pontchartrain Bridge)	Widen to 4 Lanes	HC	C	\$100,000,000	\$80,000,000		\$80,000,000	Evac. Route/Cap.
		LA 25 (US 190 to Mississippi S/L)	Widen to 4 Lanes	HC	C	\$40,000,000	\$32,000,000		\$32,000,000	Evac. Route/Cap.
	<b>Tier 3 - Future Urbanized Area Projects - Unfunded - Illustrative List</b>									
		Bootlegger Rd. (LA 1077 to LA 21)	Widen to 4 Lanes	HC	C	\$9,000,000	\$7,200,000	Local	\$7,200,000	Advance Const.
		LA 1088 Alternate (LA 1088 to US 190)	New 4 Lane	HC	C	\$10,500,000	\$8,400,000	Local	\$8,400,000	Advance Const.
		Fairway Drive	4 Lane Extension to LA 59	HC	C	\$8,000,000	\$6,400,000	Local	\$6,400,000	Advance Const.
		Hwy. Dept. Rd. (Airport Rd. to US 11)	4 Lane Extension to US 11	HC	C	\$9,000,000	\$7,200,000	Local	\$7,200,000	Advance Const.
		Dixie Ranch Rd. Ext. (US 190 to I-12)	New 2 Lane	HC	C	\$5,000,000	\$4,000,000	Local	\$4,000,000	Advance Const.
		Seymour Myers Ext. (LA 21 - Perrilloux Rd.)	New 2 Lane	HC	C	\$5,500,000	\$4,400,000	Local	\$4,400,000	Advance Const.
		Covington Bypass (LA 21 to LA 1085)	New Roadway	HC	C	\$22,900,000	\$18,320,000	Local	\$18,320,000	Advance Const.
		Alton Redevelopment (Ben Thomas to Browns Village)	New Roadway	HC	C	\$5,100,000	\$4,080,000	Local	\$4,080,000	Advance Const.
	<b>Note: These are projects that have been identified by the MPO as transportation needs for the St. Tammany UZA's and could be candidates for future advance-construction resources form STP&lt;200K resources.</b>									

## Projects identified in St. Tammany's Infrastructure 2010 Plan on the LaDOTD Highway Network

The projects listed herein were included in St. Tammany's **10 Year Infrastructure Plan** as adopted by the St. Tammany Parish Council on January 20, 2005. These projects may be partially or totally funded with local, state and federal resources, or some combination thereof, but as yet undefined. The project list below references projects in the 10 year Infrastructure Plan NOT already accounted for in the State Transportation Improvement Plan (STIP) or the Transportation Improvement Program (TIP). As such, they are included in the Metropolitan Transportation Plan to illustrate the priorities of the parish and to advise the reader of projects that may be incorporated into the formalized TIP/STIP process at a later date.

Roadway	Description	Amount
LA 25	US 190B to Washington Parish - widen to 4 lanes	\$20,000,000
LA 3228	US 190 Frontage Road (aka Asbury)	\$154,000
LA 59	From Koop to Hwy. 190 - 5 lanes	\$18,000,000
LA 437	From LA 190 to Barkers Corner - widen	\$8,000,000
LA 1077	I-12 to Hwy. 190 - 4 lanes	\$5,000,000
LA 1077	US 190 to LA 1078	\$1,300,000
LA 1077	US 190 to LA 1078, 3 lanes	\$9,000,000
LA 1077	Brewster Road to I-12 - 4 lanes with turn lanes	\$2,500,000
LA 1077	I-12 Off ramp improvements and signalization	\$1,000,000
LA 1078	LA 25 to LA 1077 improvement	\$4,000,000
LA 3228 (aka Asbury)	St. Timothy's to Hwy 190 - add 2 <sup>nd</sup> SB lane and correct drainage from N. Causeway to Hwy. 190	\$1,200,000
LA 1085	LA 21 to LA 1077 - 4 lanes	\$2,500,000
LA 1088	I-12 to LA 36	\$2,500,000
LA 1088 A	Hwy. 1088 to Hwy. 190	\$10,464,000
LA 21 Alternate, Phase 1	LA 21 to LA 1085	\$3,745,000
LA 21 Alternate, Phase 2	LA 1085 to US 190	\$22,885,000
LA 1081	From LA 437 to 437	\$6,000,000
US 190 Service Road	From Helenburg to Merchants - add second outbound lane	\$1,500,000
I-10 at Gause Interchange	Interchange improvement to Enhance Exiting	\$800,000
Dixie Ranch Rd. at I-12	New Interchange	\$25,000,000
I-12 Service Road South	LA 1088 to LA 434	\$10,000,000
I-12 Service Road South	LA 434 to Airport Road	\$10,000,000

Projects identified in St. Tammany's Infrastructure 2010 Plan on the LaDOTD Highway Network

Roadway	Description	Amount
Little Creek Service Rd.	LA 59 to LA 1088	\$5,000,000
I-12 Service Road North	LA 1088 to Fish Hatchery	\$8,000,000
LA 41	From Hwy. 11 to Hwy. 40 - pave shoulders	\$2,500,000
LA 433	From Bayou Paquet to Salmen - widen and straighten	\$9,000,000
LA 433	From Bayou Paquet to Hwy. 190	\$1,000,000
LA 434	Hwy 36 to I-12 - widen to 5 lanes	\$15,000,000
LA 434	LA 36 to Folgers	\$500,000
LA 1090 (Military Road)	US 190B to Pearl River - 4 lanes	\$25,000,000
LA 1090 (Military Road)	Turning lane at Brownsitch	\$400,000
LA 1091 (Robert Road)	From city of Slidell to Brownsitch - 4 lanes and Overpass	\$8,000,000
US 11	From Lake to Slidell city limits - 3 lanes	\$4,500,000
US 190	SE Hospital to LA 433 - 4 lanes with turn lanes	\$9,000,000
US 190 Business	From I-10 to LA 1090 - 5 lanes	---

Projects identified in St. Tammany's Infrastructure 2010 Plan but not on the LaDOTD Highway Network

The projects listed herein were included in St. Tammany's **10 Year Infrastructure Plan** as adopted by the St. Tammany Parish Council on January 20, 2005. Some of these projects may be eligible for federal aid pursuant to 23 CFR 450. The list below references projects in the 10 Year Infrastructure Plan NOT already accounted for in the State Transportation Improvement Plan (STIP) or the Transportation Improvement Program (TIP). As such, they are included in the Metropolitan Transportation Plan to illustrate the priorities of the parish and to advise the reader of projects that may be incorporated into the formalized TIP/STIP process at a later date.

Roadway	Description	Amount
Dove Park Road	Widening and Improvements	\$450,000
Dove Park Rd. Extension	From Orleans to 190 Service Rd.	\$1,000,000
Fairway Drive	Westwood Drive to LA 59	\$5,500,000
Fairway Drive	Hwy. 59 to Hwy. 1088	\$8,010,000
Fairway Drive Spur	Fairway Drive to LA 59 at Fountainbleu School	\$800,000
Galatas Road	Widening	\$300,000
Harrison Avenue Ext.	LA 59 to LA 36	\$5,000,000
Helenburg Road	Widening and Improvements	\$750,000
Hay Hollow Rd. (N)	Widen and Overlay	\$252,000
Hay Hollow Rd. (S)	Widen and Overlay	\$152,000
Lowe Davis Road	Widening	\$725,000
River Road - Covington	Widen and rehab.	\$300,000
Soult Road Widening	Widening	\$500,000
Three Rivers Service Road	New Road from Three Rivers Rd. to Hwy. 190	\$3,000,000
Three Rivers Road	Widening	\$750,000
Viola St.	Widening	\$500,000
Abita Airport Road	Hwy. 1088 to St. Tammany Airport Connection	\$9,160,000
Airport Road (Covington)	LA 25 to River Rd. - widen and resurface	\$600,000
Emerald Forest Blvd.	Falconer Dr. to Helenburg Rd.	\$2,600,000
Hillcrest - Hwy. 36 Connection	New Road from Hillcrest to Hwy. 36	\$10,000,000
Hillcrest / Peg Keller Connection	New Road from Hillcrest to Peg Keller Road	\$4,500,000
Holiday Blvd. Connector	From Service Rd. to Holiday Blvd.	\$2,000,000
Pat O'Brien Road	Widen and rehab	\$125,000
Horse Branch widening	Widen and rehab	\$700,000

Projects identified in St. Tammany's Infrastructure 2010 Plan but not on the LaDOTD Highway Network

Roadway	Description	Amount
Hosmer Mill Road	Widen and rehab	\$225,00
Lake Ramsey / Penn Mill	Widen and Improvements	\$1,500,000
Lee Settlement Rd.	Overlay and Widen	%500,000
Event's Center Blvd.	Complete other half of boulevard	\$500,000
Little Creek Service Road	Extend Little Creek Service Road to Hwy. 1088	\$5,000,000
Merchants Drive	Connect Hollycrest	\$1,200,000
Million Dollar Road	Widen and rehab	\$600,000
Northlake Christian School Road	Additional connection to US 190	\$250,000
Orleans Avenue extension	Dove Park to Fairway	\$750,000
Perrilloux Rd.	Widening	\$300,000
Tantella Ranch Rd. - LA 1078 Bypass	New roadway	\$5,000,000
Perrilloux Rd.	Overlay and widen	\$317,000
Seymour Myers Rd. extension	Seymour Myers to LA 1085 (I-12 S. Service Rd. between LA 1077 and LA 1088)	\$5,500,000
S. Fitzmorris / Smith Rd. connection	New Road from S. Fitzmorris area to Smith Rd. area	\$1,000,000
Bayou Paquet	Widen and rehab	\$3,000,000
Dixie Ranch Road	Intersection at Hwy. 190 Improvements	\$75,000
Dixie Ranch Road	Extend from I-12 to Hwy. 190	\$2,000,000
Dixie Ranch Road	Extend from I-12 to Airport Road	\$7,000,000
Dixie Ranch Road	Extend from I-12 to LA 434	\$15,000,000
Fish Hatchery Road	Highway 190 to Krentel Rd.	\$1,500,000
Fish Hatchery Road	Overlay and Widen	\$680,000
Krentel Road	LA 434 to Fish Hatchery Rd. - widen	\$700,000
S. Tranquility Road	Widen and Rehab	\$1,500,000
Voter's Road	Rehab	\$150,000
A Singletary Road	From Hwy. 36 to Hwy. 41 - widen	\$1,000,000
Airport Rd. to Hwy. 11 Connection	New connection from Airport Rd. to US 11	\$5,386,000
Airport Rd. to Hwy. 36 connection	New connection from Airport Rd. to Hwy. 36	\$9,000,000
Brownsitch Road	Maintenance Overlay	\$250,000
Brownsitch Road	From Hwy. 11 to Military Rd. - 4 lanes	\$10,000,000
CC Road	Widen and rehab	\$500,000
Crown Z Road	Overlay and Widen	\$185,000

Projects identified in St. Tammany's Infrastructure 2010 Plan but not on the LaDOTD Highway Network

Roadway	Description	Amount
Horse Shoe Island	Overlay and Widen	\$600,000
Chris Kennedy Rd.	Overlay and Widen	\$500,000
Pine Street Extension	Make connector	\$1,200,000
Receiving Station Road	Overlay and Widen	\$160,000
Receiving Station Road - Extension	New Roadway	\$4,000,000
Transmitter Road	Widen and Rehab	1,500,000
N. 3 <sup>rd</sup> Street (Alton	Overlay and Widen	\$107,00
North Pontchartrain Dr. (Lacombe)	Widen and Rehab	\$300,000

Projects in Parish Emergency Infrastructure Plan

The following projects have been promulgated by St. Tammany Parish as being important to post-Hurricane Katrina, and are not included in either the MTP or the Infrastructure Plan. Projects in this category would most likely be funded only by receipt of significant amounts of FEMA Emergency/Hazard Mitigation funding.

Roadway	Description	Amount
Traffic Collection and Management System	Interoperable with Regional ITS initiatives	\$1,400,000
I-12 North Service Road (Airport Road to US 11)	New Road	\$5,500,000
LA 21 (LA 22 to I-12)	Widen to 5 Lanes	\$5,000,000
I-12 N. Service Road (LA 21 to LA 1077)	New Road	\$6,000,000
I-12 N. Service Road (US 190 to Three Rivers Rd.)	New Road	\$4,000,000
I-12 @ LA 1085	New Interchange	\$25,000,000
Northside I-12 Road (I-12 to LA 21 Covington)	New 4 Lane	\$30,000,000
Southside I-12 Road (I-12 to LA 22 Madisonville)	New 4 Lane	\$30,000,000
Johnson Street (Madisonville)	Repair and Upgrade Existing	\$650,000
Pine Street (Madisonville)	Repair and Upgrade Existing	\$150,000
Lake Road (Madisonville)	Repair and Upgrade Existing	\$900,000

**Metropolitan Transportation Plan - St. Tammany Urbanized Area**  
**Transit Element - Financially Constrained**

Fiscal Year 2006	Project	Cost (\$1000's)	Section 5307	Section 5309	Section 5310	Section 5311	Total Federal	Local Match	Comments
	Lacombe P&R (Construction)	\$457.0		\$365.6			\$365.6	\$91.4	FY 04 Carryover, cash match
	Lacombe P&R (Land Appraisal)*	\$5.7					\$0.0	\$5.7	Partial Real Estate In-kind Contribution for 5309 Grant
	Lacombe P&R (Const. Mgmt)	\$18.3		\$18.3			\$18.3		Carryover FY 04, 5309 Grant
	Project Admin	\$4.4		\$4.4			\$4.4		Carryover FY 04, 5309 Grant
	<b>Total Section 5309 for FY 06</b>	<b>\$485.4</b>		<b>\$388.3</b>			<b>\$388.3</b>	<b>\$97.1</b>	\$91.4 cash + \$5.7 in-kind
	ITS (12 Cameras at P&R Locations)*	\$172.0	\$172.0				\$172.0		FY 03 Carryover, Local match for ITS Cameras from in-kind contribution of Lacombe. P&R land value, compliant with New Orleans Regional Architecture
	ADP - Ride Sharing Software Acquisition	\$30.6	\$24.5				\$24.5	\$6.1	Greedride acquis. cost; match = in-kind advertising and website administration
	Lacombe P&R (Land Appraisal)*	\$34.4					\$0.0	\$34.4	Local match for ITS Cameras
	LA 1077 P&R (Engineering)	\$75.0	\$60.0				\$60.0	\$15.0	Carryover FY 03, Cash Match
Madisonville P&R (Land Acquisition)	\$200.0	\$160.0				\$160.0	\$40.0	Carryover FY 03, Cash Match	
Lacombe P&R Construction	\$66.6	\$53.3				\$53.3	\$13.3	Carryover FY 03, Cash Match	
Lacombe P&R Construction Mgmt	\$2.6	\$2.1				\$2.1	\$0.5	Carryover FY 03, local match via in-kind staff services	
Contingency for LA 1077, Madisonville, ITS and Ride Sharing Software	\$123.1	\$91.6				\$91.6	\$31.5	Carryover FY 03, Cash Match	
Project Administration	\$50.0	\$40.0				\$40.0	\$10.0	Carryover FY 03, local match via in-kind staff services	
Project Mgmt (Lacombe, LA 1077 & Madisonville)	\$13.4	\$10.7				\$10.7	\$2.7	Carryover FY 03, local match via in-kind staff services	
Preventive Maintenance for ITS, PNR facilities, and 2 years Ride Sharing software maintenance fee	\$33.8	\$27.0				\$27.0	\$6.8	Carryover FY 03, local match via in-kind staff services and Ride Share Program advert	
Long Range Planning Consultant**	\$24.4					\$0.0	\$24.4	No Federal Funds	
Demand Response Operating (Sm Urban)	\$50.0	\$50.0				\$50.0		Local Match is \$24.4 Planning Consultant + Balance of \$25.6 Lacombe Land FMV	

**Metropolitan Transportation Plan - St. Tammany Urbanized Area**  
**Transit Element - Financially Constrained**

FY 2006	Project	Cost (\$1000's)	Section 5307	Section 5309	Section 5310	Section 5311	Total Federal	Local Match	Comments	
	Lacombe P&R (Land Appraisal)*	\$25.6							\$25.6	Balance of \$65,681 FMV
	Elderly & Handicapped Vans	\$42.0			\$33.6				\$8.4	Pending Grant Award by LaDOTD
	Operating (Rural)	\$200.0				\$100.0	\$100.0	\$100.0	\$100.0	Existing Rural Program
<b>Total FY 06</b>	<b>\$1,586.9</b>	<b>\$691.2</b>	<b>\$388.3</b>	<b>\$33.6</b>	<b>\$100.0</b>	<b>\$1,179.5</b>	<b>\$415.8</b>			

\* Local Match for Project determined as in-kind contribution for the Fair Market value of the Lacombe Park and Ride, determined value of \$65,681.

\*\*Cost of Long Range Planning Consultant to be used as in-kind matching share of Demand Response Operating Assistance

**Metropolitan Transportation Plan - St. Tammany Urbanized Area**  
**Transit Element - Financially Constrained**

Fiscal Year 2007	Project	Cost (\$1000's)	Section 5307	Section 5309	Section 5310	Section 5311	Total Federal	Local Match	Comments	
	LA 1077 P&R (Construction)*	\$453.5		\$453.5				\$453.5	\$0.0	Carryover FY 05 Section 5309, Donation in lieu of cash match
	LA 1077 P&R (RE Acquisition)	\$113.4					\$0.0	\$113.4	Donation by parish	
	LA 1077 P&R (Project Management)	\$22.6		\$18.1			\$18.1	\$4.5	Carryover FY 05 Section 5309, Match via in-kind staff services	
	LA 1077 P&R (Construction Management)	\$17.8		\$14.2			\$14.2	\$3.6	Carryover FY 05 Section 5309, Cash Match	
	<b>Total Section 5309</b>	<b>\$607.3</b>		<b>\$485.8</b>			<b>\$485.8</b>	<b>\$121.5</b>		
	ITS (8 Cameras Installed at P&R)	\$76.0	\$76.0				\$76.0		Carryover FY 04 Section 5307, \$15.2 match is cost of long range planning consultant. Compliant with New Orleans Regional Architecture	
	Long Range Planning- Transit Consultant**	\$15.2					\$0.0	\$15.2	Cost of Long Range Planning Consultant to be used as match**	
	Abita P&R (Real Est. Acquisition)	\$41.5					\$0.0	\$41.5	Fair Market Value of Donation of Property by the Town of Abita	
	Abita P&R (Construction)	\$355.0	\$317.2				\$317.2	\$37.8	Carryover FY 04 Section 5307, Cash Match	
Abita P&R (Project Mgmt)	\$15.9	\$12.7				\$12.7	\$3.2	Carryover FY 04 Section 5307, Match via in-kind staff services		
Abita P&R (Const. Mgmt)	\$14.2	\$11.4				\$11.4	\$2.8	Carryover FY 04 Section 5307, Match via in-kind staff services		
LA 1077 P&R (Construction)*	\$446.5	\$393.8				\$393.8	\$52.7	Carryover FY 04 Section 5307, Cash Match		
LA 1077 P&R (R.E. Acquisition)	\$36.6					\$0.0	\$36.6	Est. Fair Market Value of \$150K -\$113.4K Rec. District 14 Donation		
LA 1077 P&R (Const. Mgmt.)	\$17.9	\$14.3				\$14.3	\$3.6	Carryover FY 04 Section 5307, Match via in-kind staff services		
Madisonville P&R (Engineering)	\$75.0	\$60.0				\$60.0	\$15.0	Carryover FY04 Section 5307, LA 1085 at LA 22, Cash Match		
Madisonville P&R (Project Mgmt)	\$3.0	\$2.4				\$2.4	\$0.6	Carryover FY 04 Section 5307, Match via in-kind staff services		

**Metropolitan Transportation Plan - St. Tammany Urbanized Area**  
**Transit Element - Financially Constrained**

<b>Fiscal Year 2007</b>	<b>Project</b>	<b>Cost (\$1000's)</b>	<b>Section 5307</b>	<b>Section 5309</b>	<b>Section 5310</b>	<b>Section 5311</b>	<b>Total Federal</b>	<b>Local Match</b>	<b>Comments</b>	
	East Covington P&R (Engineering)	\$75.0	\$60.0					\$60.0	\$15.0	DOTD Dist 062 Maintenance Facility, Carryover FY 04 Section 5307, Cash Match
	East Covington P&R (Project Mgmt)	\$3.0	\$2.4					\$2.4	\$0.6	Carryover FY 04 Section 5307, Match via in-kind staff services
	Contingency for Abita, Madisonville, or E. Covington Const., PM & CM	\$309.3	\$237.1					\$237.1	\$72.2	Carryover FY04 Section 5307, Cash Match or in-kind staff services
	Training	\$6.5	\$5.2					\$5.2	\$1.3	Carryover FY04 Section 5307, Cash Match
	Preventative Maintenance	\$20.0	\$16.0					\$16.0	\$4.0	Carryover FY 04 Section 5307, ITS Cameras and P&R facilities, Cash Match
	Project Administration	\$20.0	\$16.0					\$16.0	\$4.0	Carryover FY 04 Section 5307, Local Match via In-kind Staff Services
	Long Range Planning- Transit Consultant**	\$50.0							\$50.0	
	Small Urban Operating (Demand-Response)	\$50.0	\$50.0					\$50.0		Carryover FY 04 Section 5307, Long Range Planning Consultant in lieu of cash match (\$25K)*
	Elderly & Handicapped Vans Operating (Rural)	\$42.0				\$33.6			\$8.4	Pending Grant Award by LaDOTD
	\$200.0					\$100.0	\$100.0	\$100.0	Existing Rural Program	
<b>Total FY 07</b>	<b>\$2,479.9</b>	<b>\$1,274.5</b>	<b>\$485.8</b>	<b>\$33.6</b>	<b>\$100.0</b>	<b>\$1,860.3</b>	<b>\$586.0</b>			

\* Match derived from Estimated Value of LA 1077 Site, \$900,000

\*\*Cost of Long Range Planning Consultant to be used as in-kind matching share

**Metropolitan Transportation Plan - St. Tammany Urbanized Area**  
**Transit Element - Financially Constrained**

Fiscal Year 2008	Project	Cost (\$1000's)	Section 5307	Section 5309	Section 5310	Section 5311	Total Federal	Local Match	Comments	
	West Covington Park& Ride (Engineering)	\$75.0	\$60.0					\$60.0	\$15.0	Carryover FY 05 Section 5307, Cash Match
	West Covington Park& Ride (Project Mgmt)	\$3.0	\$2.4					\$2.4	\$0.6	Carryover FY 05 Section 5307, Cash Match
	Madisonville Park& Ride (Construction)	\$450.0	\$360.0					\$360.0	\$90.0	\$700K improve 2 acres + \$ 200K for terminal = \$900K
	Madisonville Park& Ride (Project Mgmt)	\$18.0	\$14.4					\$14.4	\$3.6	Carryover FY 05 Section 5307, Cash Match
	East Covington (RE Acquisition)	\$180.0						\$0.0	\$180.0	Estimated Fair Market Value, Long Term Lease with LADOTD = 20% match for Construction Costs
	East Covington (Construction)	\$720.0	\$720.0					\$720.0	\$0.0	Estimated Fair Market Value, Long Term Lease with LADOTD = 20% match for Construction Costs
	East Covington (Project Management)	\$7.2	\$5.8					\$5.8	\$1.4	Carryover FY 05 Section 5307, Cash Match
	East Covington (Construction Management)	\$28.8	\$23.0					\$23.0	\$5.8	Carryover FY 05 Section 5307, Cash Match
	Contingency (Madisonville, E. Covington or W. Covington)	\$98.5	\$78.8					\$78.8	\$19.7	Carryover FY 05 Section 5307, Cash Match
	Project Administration	\$20.0	\$16.0					\$16.0	\$4.0	Carryover FY 05 Section 5307, Staff time in lieu of cash match
	Preventive Maintenance	\$20.0	\$16.0					\$16.0	\$4.0	Carryover FY 05 Section 5307, ITS and P&R, Staff time in lieu of cash match
	Training	\$6.8	\$5.4					\$5.4	\$1.4	Carryover FY 05 Section 5307, Staff time in lieu of cash match
	Long Range Planning Consultant**	\$50.0						\$0.0	\$50.0	Consultant contribution to be used in lieu of cash.
	Elderly & Handicapped Vans	\$42.0				\$33.6			\$8.4	Pending Grant Award by LaDOTD
	Small Urban Operating	\$50.0	\$50.0					\$50.0	\$0.0	
Rural Operating	\$200.0					\$100.0	\$100.0	\$100.0		
<b>Total FY 08</b>	<b>\$1,969.3</b>	<b>\$1,351.8</b>	<b>\$0.0</b>	<b>\$33.6</b>	<b>\$100.0</b>	<b>\$1,451.8</b>	<b>\$483.9</b>			

**Metropolitan Transportation Plan - St. Tammany Urbanized Area**  
**Transit Element - Financially Constrained**

<b>Project</b>	<b>Cost (\$1000's)</b>	<b>Section 5307</b>	<b>Section 5309</b>	<b>Total Federal</b>	<b>Local Match</b>
Agregated Estimated Costs per Tier					
<b>TIER 2 - FY 2009 - FY 2013</b>					
Park and Ride Implementation & ITS	\$ 7,163.8	\$ 3,271.0	\$ 2,460.0	\$ 5,731.0	\$ 1,432.8
Planning/Training/Travel	\$ 400.0	\$ 320.0	\$ -	\$ 320.0	\$ 80.0
Operational Assistance (5307) (50% Match)	\$ 5,000.0	\$ 2,500.0	\$ -	\$ 2,500.0	\$ 2,500.0
Operational Assistance (5311) (50% Match)	\$ 900.0	\$ -	\$ -	\$ 450.0	\$ 450.0
<b>Total Tier 2</b>	\$ 13,463.8	\$ 6,091.0	\$ 2,460.0	\$ 9,001.0	\$ 4,462.8
<b>TIER 3 - FY 2014 - FY 2030</b>					
	<b><u>Cost</u></b>	<b><u>5307</u></b>	<b><u>5309</u></b>	<b><u>Total Fed.</u></b>	<b><u>Local Match</u></b>
Park and Ride Implementation & ITS	\$ 24,357	\$ 11,121.4	\$ 8,364.0	\$ 19,485.4	\$ 4,871
Planning/Training/Travel	\$ 1,360	\$ 1,088.0	\$ -	\$ 1,088.0	\$ 272
Operational Assistance (5307) (50% Match)	\$ 17,000	\$ 8,500.0	\$ -	\$ 8,500.0	\$ 8,500
Operational Assistance (5311) (50% Match)	\$ -	\$ -	\$ -	\$ -	\$ -
Fixed Guideway Improvement*	\$ <u>150,000.0</u>	\$ -	\$ <u>90,000.0</u>	\$ -	\$ <u>60,000.0</u>
<b>Total Tier 3</b>	\$ 192,717	\$ 26,016.4	\$ 98,364.0	\$ 29,073.4	\$ 73,643
* Considered an unfunded transportation need consistent with goals of St. Tammany comprehensive planning efforts					

**STATE MAILING LIST**  
**UPDATED October 17, 2006**

U.S. Dept. of Transportation  
Federal Aviation Adm.  
2601 Meacham Blvd.  
Ft. Worth, TX 76137-4298

Dwight Landreneau, Secretary  
LA Dept. of Wildlife & Fisheries  
Post Office Box 98000  
Baton Rouge, LA 70898

LA Dept. of Economic Development  
Office of Commerce & Industry  
Post Office Box 94185  
Baton rouge, LA 70804-9185

Executive Director  
LA Forestry Association  
Post Office Drawer 5067  
Alexandria, LA 71301

Dept. of Agriculture and Forestry  
Office of Forestry  
Post Office Box 1628  
Baton Rouge, LA 70821

Federal Activities Branch (6e-f)  
US Environmental Protection Agency  
1445 Ross Ave., Suite 1200  
Dallas, TX 75202-2733

Dept. of Agriculture & Forestry  
Office of Soil & Water Conservation  
Post Office Box 3554  
Baton Rouge, LA 70821-3554

Dept. of Culture Recreation & Tourism  
Division of Archaeology  
Post Office Box 44247  
Baton rouge, LA 70804

Mr. James Champagne  
Dept. of Public Safety  
Highway Safety Commission  
Post Office Box 66336  
Baton Rouge, LA 70896

LA Dept. of Environmental Quality  
Office of Management & Finance  
Contracts & Grants Division  
Post Office Box 4303  
Baton Rouge, LA 70821-4303

LA Dept. of Natural Resources  
Office of Conservation  
Post Office Box 94275  
Baton Rouge, LA 70804-9275

Mr. Maurice Watson  
LA Dept of Wildlife & Fisheries  
Post Office Box 98000  
Baton Rouge, LA 70898-9000

LA Good Roads Association  
646 North St.  
Baton Rouge, LA 70802

Natural Resources Conservation Service  
3737 Government St.  
Alexandria, LA 71302

U.S. Dept. of Housing & Urban Dev.  
801 Cherry St., 25<sup>th</sup> Fl.  
Fort Worth, TX 76102

Natural Heritage Program  
LA Dept. of Wildlife & Fisheries  
Post Office Box 98000  
Baton Rouge, LA 70802

Mr. Michael P Jansky  
6ENXP  
US Environmental Protection Agency  
1445 Ross Ave., Suite 1200  
Dallas, TX 75202-2733

Mr. Gus Rodemacher  
LA State Mineral Board  
Post Office Box 2827  
Baton Rouge, LA 70821

Charles St. Romain  
Administrator  
State Land Office  
Post Office Box 44124  
Baton Rouge, LA 70804

U.S. Dept of the Interior  
National Park Service  
450 Auburn Ave., NE  
Atlanta GA 30312-1525

U.S. Dept. of the Interior  
Geological Survey  
3535 South Sherwood Forest Blvd.  
Suite 120  
Baton Rouge, LA 70806

Attorney General's Office  
State of Louisiana  
Post Office Box 94005  
Baton Rouge, LA 70804

US Fish & Wildlife Service  
646 Cajundome Blvd., Suite 400  
Lafayette, LA 70506

FEMA, Region VI  
800 North Loop 288  
Denton, TX 76209

Environmental Assessment  
Sierra Club / Delta Chapter  
Post Office Box 19469  
New Orleans, LA 70179-0469

Office of State Parks  
Dept. of Culture, Recreation  
& Tourism  
Post Office Box 44426  
Baton Rouge, LA 70804

U.S. Dept. of Commerce  
Economic Development Adm.  
504 Lavaca Street, Suite 1100  
Austin, TX 78701-2858

Dept. of Health and Hospitals  
Dept. of Public Health and Sanitation  
Post Office Box 629  
Baton Rouge, LA 70821

U.S. Environmental Protection Agency  
Office of Groundwater  
1445 Ross Ave., Suite 1200  
Dallas, TX 75202-2733

James Wilkins  
Directory of Legal Advisory Service  
Louisiana State University  
227 B Sea Grant Building  
Baton Rouge, LA 70803-7507

District Commander  
8<sup>th</sup> Coast Guard District  
Hale Boggs Federal Building  
500 Poydras St.  
New Orleans, LA 70130

U.S. Environmental Protection Agency  
Marine & Wetlands Section  
6WQ-EM  
1445 Ross Ave., Suite 1200  
Dallas, TX 75202-2733

La. Dept. of Transportation and Development  
Floodplain Management Program  
Post Office Box 94245  
Baton Rouge, LA 70804-9245

Dept. of Health & Hospitals  
Division of Environmental Health  
Post Office Box 629  
Baton Rouge, LA 70821-0629

Mr. Mark Davis  
Executive Director  
Coalition to Restore Coastal Louisiana  
Post Office Box 1827  
Baton rouge, LA 70821

Chitimacha Tribe of Louisiana  
Post Office Box 661  
Charenton, LA 70523

Office of Indian Affairs  
Post Office Box 94004  
Baton Rouge, LA 70804-9004

Inter-tribal Council of Louisiana, Inc.  
5723 Superior Dr, Suite B-1  
Baton Rouge, LA 70816

Ms. Amy Powell  
Dept. of the Army  
Tech Support  
Post Office Box 60267  
New Orleans, LA 70538

Honorable Bobby Jindal  
U.S. House of Representatives  
1205 Longworth House Office Building  
Washington, DC 20515

Honorable Charlie Melancon  
U.S. House of Representatives  
404 Cannon House Office Building  
Washington, DC 20515

Honorable Jim McCrery  
U.S. House of Representatives  
2104 Rayburn House Office Building  
Washington, DC 20515

Honorable Rodney Alexander  
U.S. House of Representatives  
316 Cannon House Office Building  
Washington, DC 20515

Honorable William Jefferson  
U.S. House of Representatives  
2113 Rayburn House Office Building  
Washington, DC 20515

Honorable Richard Baker  
U.S. House of Representatives  
341 Cannon House Office Building  
Washington, DC 20515

Honorable Charles Boustany, Jr.  
U.S. House of Representatives  
1117 Longworth House Office Building  
Washington, DC 20515

Honorable Mary Landrieu  
United States Senator  
724 Hart Senate Office Building  
Washington, DC 20510

Honorable David Vitter  
United States Senator  
516 Hart Senate Office Building  
Washington, DC 20510

Hon. Walter J. Boasso  
Member, Louisiana Senate  
District 1  
100 Intermodal Drive  
Chalmette, LA 70043

Hon. Patricia Brister  
Councilmember, District 4  
St. Tammany Parish  
108 Audubon Ln.  
Mandeville, LA 70471

Hon. Timothy Burns  
Member, Louisiana House of Repr  
District 89  
1 Sanctuary Blvd.  
Mandeville, LA 70471

Hon. A. G. Crowe  
Member, Louisiana House of Representatives  
District 76  
195 Strawberry St.  
Slidell, LA 70460

Hon. Kevin Davis  
Parish President  
St. Tammany Parish  
Post Office Box 628  
Covington, LA 70434

Hon. Ben O. Morris  
Mayor  
City of Slidell  
Post Office Box 828  
Slidell, LA 70459

Hon. Ben Nevers  
Member, Louisiana Senate  
District 12  
724 Avenue F  
Bogalusa, LA 70427

Hon. Eddie Price  
Mayor  
City of Mandeville  
3101 East Causeway Approach  
Mandeville, LA 70448

Hon. Julie Quinn  
Member, Louisiana Senate  
District 6  
3330 North Causeway Blvd.  
Metairie, LA 70002

Hon. John T. "Tom" Schedler  
Member, Louisiana Senate  
District 11  
3840 Highway 22  
Mandeville, LA 70471

Hon. Matthew "Pete" Schneider  
Member, Louisiana House of Representatives  
District 90  
Post Office Box 669  
Slidell, LA 70459

Hon. Steve Stefancik  
Chairman  
St. Tammany Parish Council  
107 Royal Dr.  
Slidell, LA 70460-5203

Hon. Michael Strain  
Member, Louisiana House of Representatives  
District 74  
19607 Highway 36  
Covington, LA 70433-8734

Hon. Diane Winston  
Member, Louisiana House of Representatives  
District 77  
321 North Florida St.  
Covington, LA 70433

St. Tammany Parish School Board  
Post Office Box 940  
Covington, LA 70434

St. Tammany Parish Council  
Post Office Box 628  
Covington, LA 70434

Department of Public Works  
St. Tammany Parish  
Post Office Box 628  
Covington, LA 70434

Greater New Orleans, Inc.  
365 Canal St.  
New Orleans, LA 70130

Greater Slidell Area Chamber of Commerce  
118 West Hall Ave.  
Slidell, LA 70460

St. Tammany Parish Sheriff's Office  
701 N. Columbia St.  
Covington, LA 70434

St. Tammany West Chamber of Commerce  
610 Hollycrest Blvd.  
Covington, LA 70433

Mr. Dexter Accardo  
Director, Office of Homeland Security and Emergency Preparedness  
St. Tammany Parish  
510 East Boston St.  
Covington, LA 70433

Ms. Nahketah Bagby  
City Planner  
City of Covington  
609 N. Columbia Street  
Covington, LA 70433

Mr. Martin Bruno  
Director of Planning  
City of Slidell  
Post Office Box 828  
Slidell, LA 70459

Mr. Sidney Fontenot  
Director, Department of Planning  
St. Tammany Parish  
Post Office Box 628  
Covington, LA 70434

Mr. Francis Gomila  
Commissioner  
Regional Planning Commission  
1400-B Gause Blvd.  
Slidell, LA 70458

Mr. Richard Kelley  
Commissioner  
Regional Planning Commission  
45 Cypress Rd.  
Covington, LA 70433

Ms. Louise Kidd  
Director, Dept. of Planning & Development  
City of Mandeville  
3101 East Causeway Approach  
Mandeville, LA 70448

Mr. William Oiler  
Chief Administrative Officer  
St. Tammany Parish  
Post Office Box 628  
Covington, LA 70434

Mr. Joe Shoemaker  
Public Works Department  
St. Tammany Parish  
21490 Koop Dr.  
Mandeville, LA 70471

Hon. Candace Watkins  
Mayor  
City of Covington  
Post Office Box 778  
Covington, LA 70434



KATHLEEN BABINEAUX BLANCO  
GOVERNOR

STATE OF LOUISIANA  
DEPARTMENT OF TRANSPORTATION AND DEVELOPMENT  
P.O. Box 94245  
Baton Rouge, Louisiana 70804-9245  
www.dotd.louisiana.gov



JOHNNY B. BRADBERRY  
SECRETARY

June 12, 2006

Mr. Walter Brooks, Executive Director  
Regional Planning Commission  
1340 Poydras Street, Ste. 2100  
New Orleans, LA 70112

**Subject: DOTD Capacity & Corridor Program  
State Fiscal Year 2010 and Beyond**

Dear Mr. Brooks:

We have recently been asked by Metropolitan Planning Organizations (those that are in the process of updating their financially constrained metropolitan transportation plans) for guidance as to the future of the DOTD Capacity & Corridor Program. As you may be aware, in developing the *Louisiana Statewide Transportation Plan* only a few years ago, a variety of future funding scenarios were evaluated.

Under Scenario 1A, wherein no new revenues are forthcoming, the DOTD would eliminate the Capacity & Corridor program at the end of Fiscal Year 2009-2010 and focus entirely on System Preservation, Operations and Safety. Any Capacity projects beyond Fiscal Year 2009-2010 would have to be funded through federal or state earmarks or with Urban Systems (i.e. STP>200K or STP<200K) funds under this scenario.

Accordingly, for any future updates of MPO financially constrained metropolitan transportation plans, it is recommended that capacity type projects which in the past have been funded through regular federal and state sources, beyond Fiscal Year 2010, be shown in an "unfunded needs" section. The plan can contain narrative describing how those projects **could** be funded in the future through such mechanisms as: future federal or state earmarks, state general obligation bonds, local funds, or some other type or combinations of funds.

Mr. Walter Brooks  
June 12 2006  
Page 2

We had hoped the new federal surface transportation bill would provide an influx of new funding; however, nearly the entire increase was earmarked by Congress. Unless something changes at the state level, the financial outlook for the DOTD Highway Program is bleak. At a minimum, we must focus on preserving and operating the current system while maintaining a modest highway safety program.

If you have any questions regarding this matter, please contact me at (225) 379-1248 or Mr. Mike Schiro, Transportation Planning Administrator, at (225) 379-1956.

Sincerely,



Eric Kalivoda  
Assistant Secretary  
Office of Planning and Programming

c: Mr. Johnny B. Bradberry  
Mr. Cedric Grant  
Mr. William Temple  
Mr. Michael Bridges  
Mr. Gordon Nelson  
Mr. Mike Schiro  
Mr. Michael Stack  
Mr. Jeff Roesel  
Mr. Dan Broussard  
Ms. Robin Romeo  
Mr. Jim Yates  
Mr. Joe Bloise, FHWA