

# BAINBRIDGE STREET ACCESS TO MSY JEFFERSON PARISH, LOUISIANA

## STAGE 0 FEASIBILITY STUDY

### CONCEPTUAL PLANS

April 2019

Prepared for:

Regional Planning Commission for

Jefferson, Orleans, Plaquemines, St. Bernard, St. Charles, St. John the Baptist, St. Tammany and Tangipahoa Parishes



Prepared by:

MEYER ENGINEERS, LTD.  
4937 Hearst Street, Suite 1B  
Metairie, LA 70001

RPC Task No. A-3.19: FY-19 UPWP  
State Project No. H.972314.12  
Meyer Engineers, Ltd. Project No. 20-1864  
Engineer: Meyer Engineers, Ltd.  
Traffic: ITS Regional, LLC

Volume II



ITS REGIONAL, LLC

Health & Transportation Engineering / Land Use Planning / Surveying



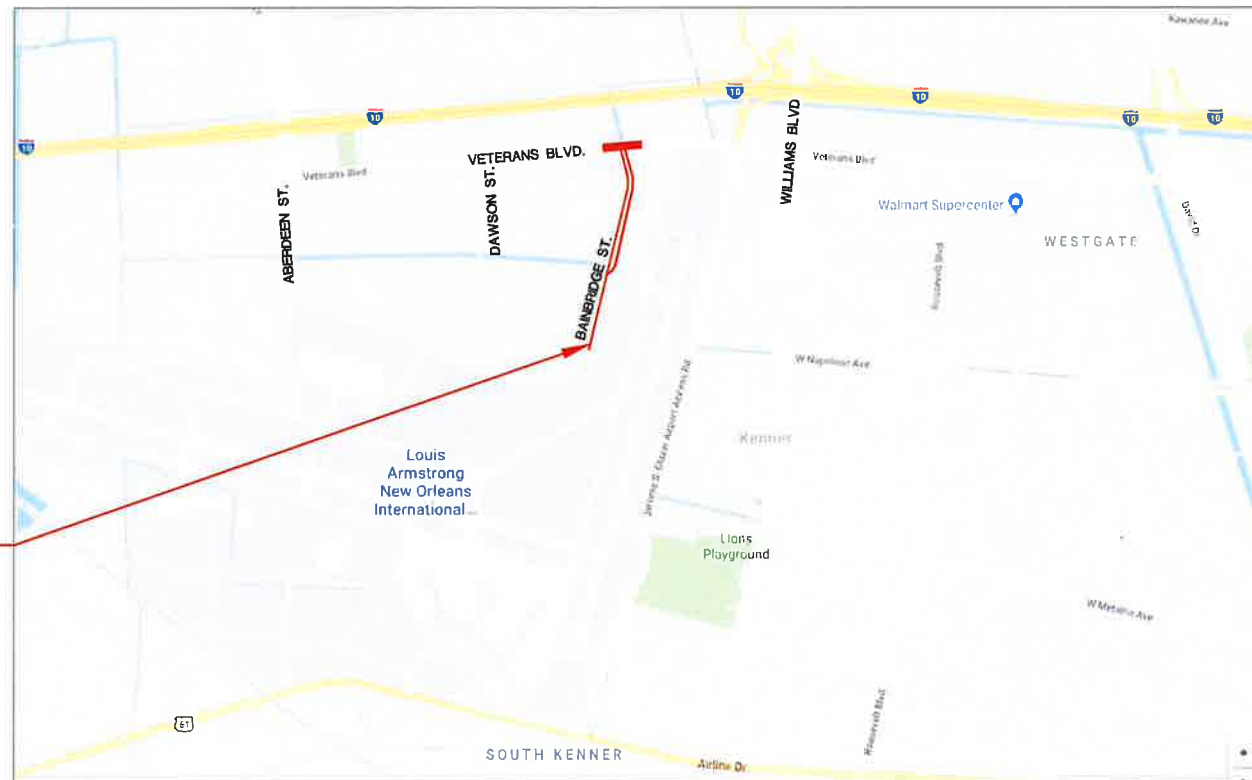
INDEX OF SHEETS	
1	TITLE SHEET
2	TYPICAL SECTIONS
3	SITE PLAN

**BAINBRIDGE STREET ACCESS TO MSY**  
**KENNER, LOUISIANA**  
**A/E PROJECT NO. 20-1864**  
**RPC TASK A-3.19: FY-19 UPWP**  
**STATE PROJECT NO. H.972314.1**



PROJECT LOCATION

LOCATION MAP



PROJECT LOCATION

LAYOUT MAP



project no. 20-1864  
 drawn AIS  
 checked DHD  
 date 04-22-2019  
 revised

**Meyer Engineers, Ltd.**  
 4937 Hearst Street - Suite 1B - Metairie, Louisiana 70001  
 phone 504.885.9892 . fax 504-887-5056  
 website www.meyer-e.com



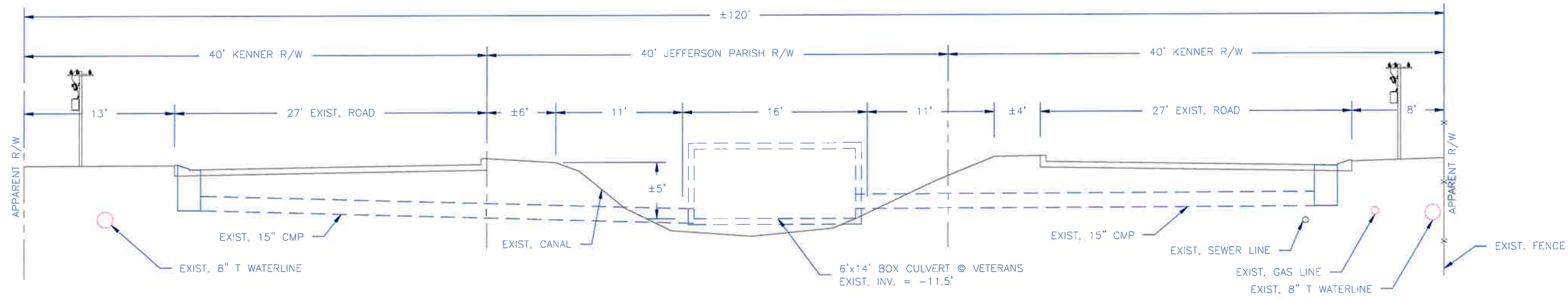
**TITLE SHEET**  
**BAINBRIDGE STREET ACCESS TO MSY**  
**RPC TASK A-3.19: FY-19 UPWP**  
**STATE PROJECT NO. H.972314.1**

sheet no.

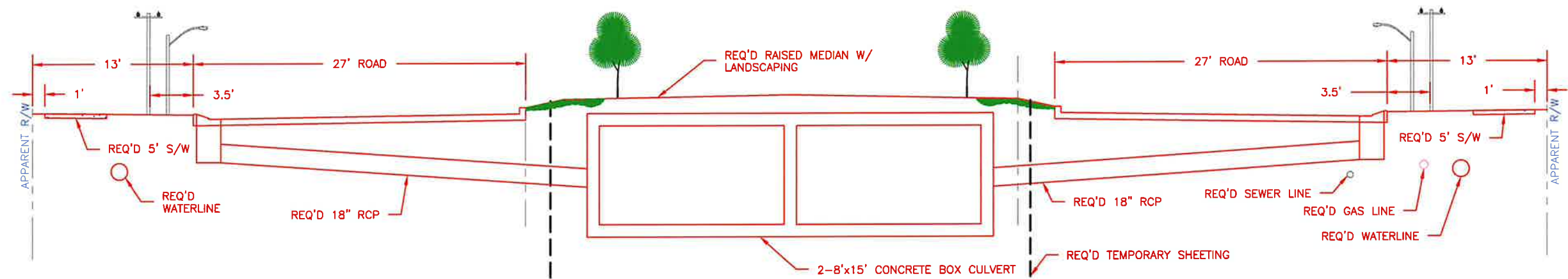
**1**

of sheets

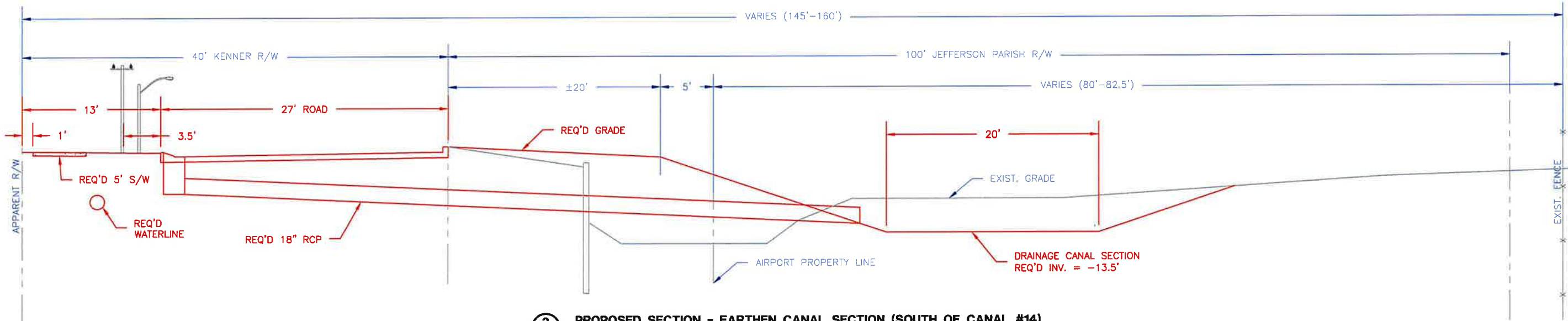
project no. 20-1864  
 drawn AIS  
 checked DHD  
 date 04-22-2019  
 revised



**1**  
**EXISTING TYPICAL SECTION**  
 (LOOKING NORTH) 1"=10'



**2**  
**PROPOSED SECTION - 2-8'x15' CONCRETE BOX CULVERT**  
 (LOOKING NORTH - VETERANS TO CANAL #14) 1"=10'



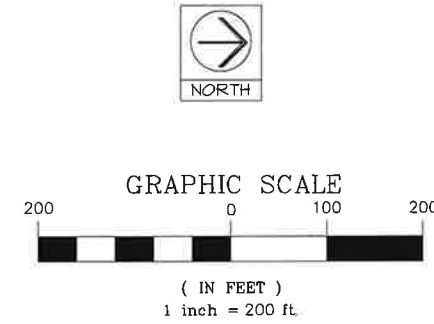
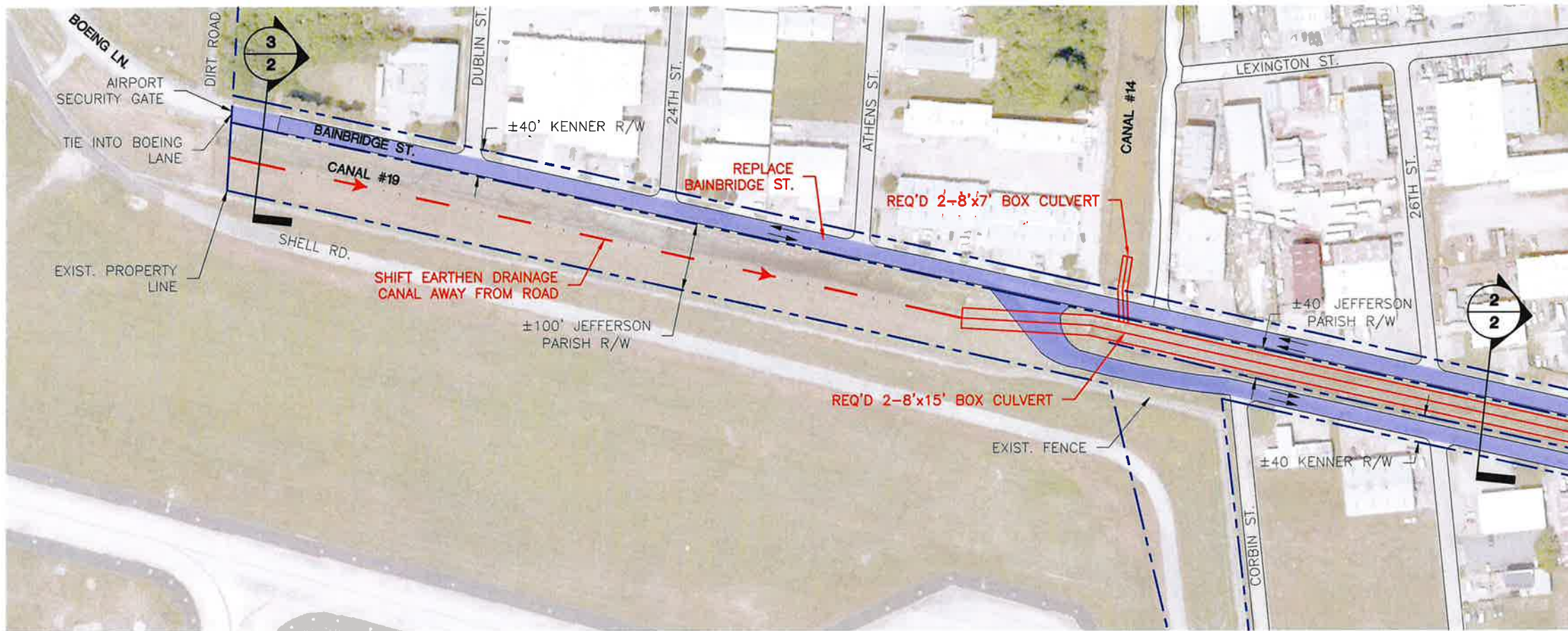
**3**  
**PROPOSED SECTION - EARTHEN CANAL SECTION (SOUTH OF CANAL #14)**  
 (LOOKING NORTH - AIRPORT PROPERTY TO CANAL #14) 1"=10'

**Meyer Engineers, Ltd.**  
 4937 Hearst Street . Suite 1B . Metairie, Louisiana 70001  
 phone.504.885.9892 . fax.504-887-5056  
 website.www.meyer-e-l.com



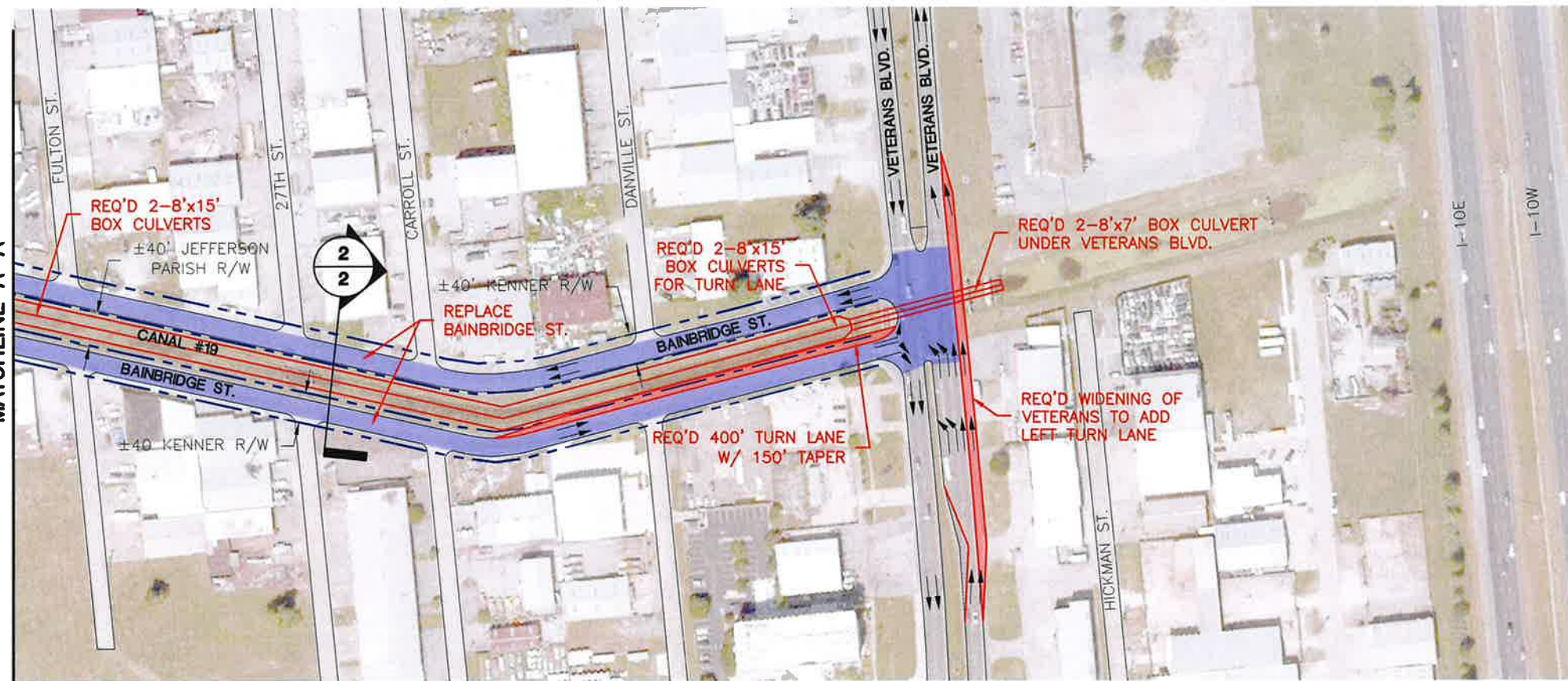
**TYPICAL SECTIONS**  
**BAINBRIDGE STREET ACCESS TO MSY**  
**RPC TASK A-3.19: FY-19 UPWP**  
**STATE PROJECT NO. H.972314.1**

sheet no.  
**2**  
 of \_\_\_ sheets



project no. 20-1864  
 drawn AIS  
 checked DHD  
 date 04-22-2012  
 revised

**Meyer Engineers, Ltd.**  
 4937 Hearst Street . Suite 1B . Metairie, Louisiana 70001  
 phone.504.885.9892 . fax.504.887.5056  
 website.www.meyer-e-l.com



**NOTE:**  
 REQ'D SUBSURFACE DRAINAGE, SIDEWALKS, STREETLIGHTS,  
 STREETSCAPING & LANDSCAPING ARE NOT SHOWN.

**SITE PLAN**  
**BAINBRIDGE STREET ACCESS TO MSY**  
**RPC TASK A-3.19: FY-19 UPWP**  
**STATE PROJECT NO. H.972314.1**

sheet no.  
**3**  
 of sheets

PLOT 1=1