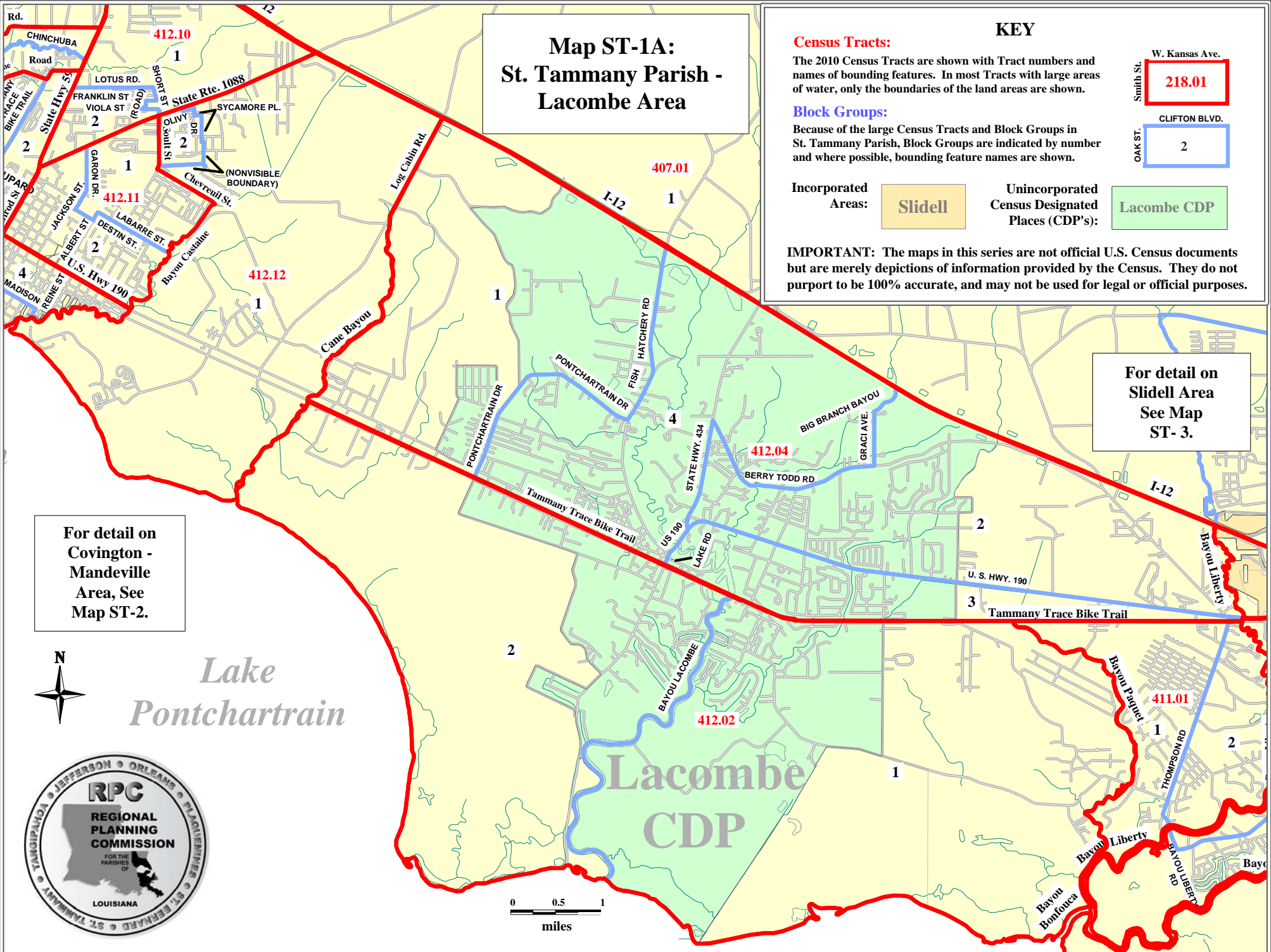
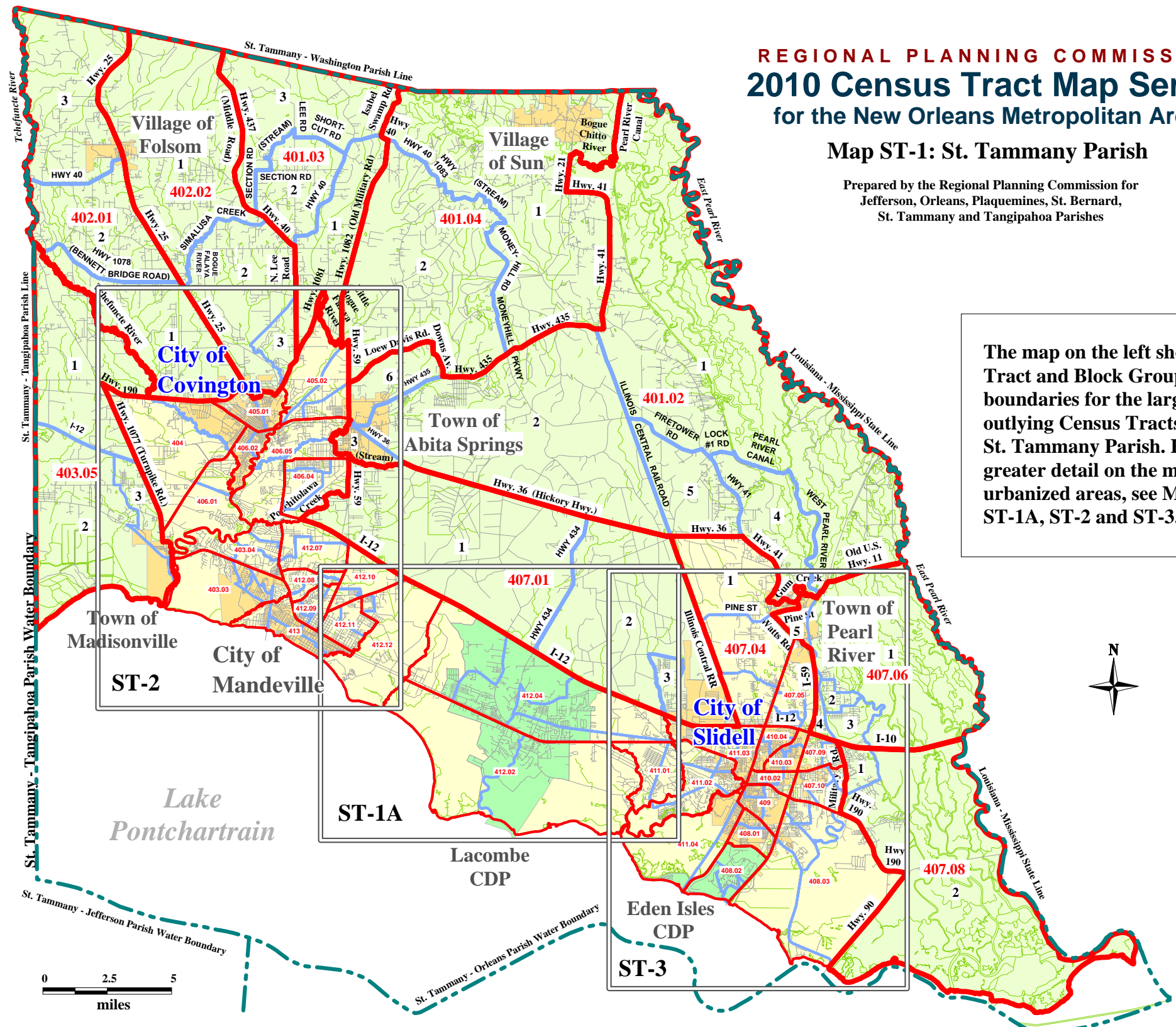


REGIONAL PLANNING COMMISSION  
**2010 Census Tract Map Series**  
 for the New Orleans Metropolitan Area

**Map ST-1: St. Tammany Parish**

Prepared by the Regional Planning Commission for  
 Jefferson, Orleans, Plaquemines, St. Bernard,  
 St. Tammany and Tangipahoa Parishes

The map on the left shows  
 Tract and Block Group  
 boundaries for the larger  
 outlying Census Tracts in  
 St. Tammany Parish. For  
 greater detail on the more  
 urbanized areas, see Maps  
 ST-1A, ST-2 and ST-3.



**KEY**

**Census Tracts:**  
 The 2010 Census Tracts are shown with Tract numbers and names of bounding features. In most Tracts with large areas of water, only the boundaries of the land areas are shown.

**Block Groups:**  
 Because of the large Census Tracts and Block Groups in St. Tammany Parish, Block Groups are indicated by number and where possible, bounding feature names are shown.

**Incorporated Areas:** Slidell

**Unincorporated Census Designated Places (CDP's):** Lacombe CDP

**IMPORTANT:** The maps in this series are not official U.S. Census documents but are merely depictions of information provided by the Census. They do not purport to be 100% accurate, and may not be used for legal or official purposes.

For detail on  
 Covington -  
 Mandeville  
 Area, See  
 Map ST-2.

For detail on  
 Slidell Area  
 See Map  
 ST- 3.

