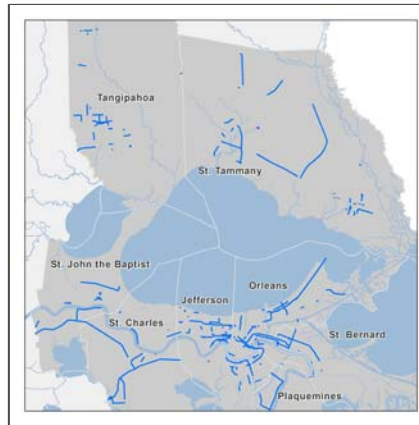


TIP2019to2022_NORPC_2019

Shapefile



Tags

New Orleans Regional Planning Commission, Transportation Improvement Program (TIP), FHWA

Summary

TIPs consist of priority lists of projects (both highway and transit) which are being advanced toward construction over the four-year period, FY-2019 to FY-2022.

Description

Transportation Improvement Programs are adopted bi-annually by the Regional Planning Commission (RPC). They are prepared cooperatively by the RPC, acting in its legal capacity as the Metropolitan Planning Organization for the New Orleans urbanized area, and Louisiana Department of Transportation and Development (LaDOTD), and affected transit operators.

TIPs consist of priority lists of projects (both highway and transit) which are being advanced toward construction over the four-year period, FY-19 to FY-22. Projects found in the TIPs have evolved through the transportation planning process and are contained in the region's long-range Metropolitan Transportation Plan.

Both the local TIPs and State TIP are identical documents containing a common set of projects proposed for federal funding. TIPs and STIP are products of a consensus-building process carried out jointly by the RPC and the Louisiana Department of Transportation and Development.

Both the TIPs and STIP are on a two-year update cycle. However, the TIPs are reviewed annually by the RPC and selected revisions are permitted, following formal amendment procedures.

Projects contained in the TIPs are derived from Phase I of the Metropolitan Transportation Plan. Projects are largely reconstruction-oriented consisting of roadway rehabilitation, overlay, and traffic signalization. Bus transit and rail rehabilitation and extensions are also emphasized along with intermodal facilities development.

Projects identified in the TIPs are part of the approved Transportation Plan and refer to improvements being funded under the Fixing America's Surface Transportation Act (FAST Act).

Credits

RPC 2019

Use limitations

There are no access and use limitations for this item.

Extent

West -90.682705 **East** -89.698800
North 30.941377 **South** 29.663017

Scale Range

Maximum (zoomed in) 1:5,000
Minimum (zoomed out) 1:150,000,000

ArcGIS Metadata ▶**Topics and Keywords ▶**

* CONTENT TYPE Downloadable Data

Hide Topics and Keywords ▲

Citation ▶

* TITLE TIP2019to2022_NORPC_2019
PUBLICATION DATE 2020-03-30 00:00:00

PRESENTATION FORMATS * digital map

Hide Citation ▲

Citation Contacts ▶

RESPONSIBLE PARTY

INDIVIDUAL'S NAME Lynn Dupont
ORGANIZATION'S NAME Regional Planning Commission
CONTACT'S POSITION Principal Planner
CONTACT'S ROLE point of contact

CONTACT INFORMATION ▶

PHONE

VOICE 504-483-8514

ADDRESS

TYPE both
DELIVERY POINT 10 Veterans Boulevard
CITY New Orleans
ADMINISTRATIVE AREA LA
POSTAL CODE 70124
COUNTRY US
E-MAIL ADDRESS ldupont@norpc.org

HOURS OF SERVICE

9a-5p CST

Hide Contact information ▲

RESPONSIBLE PARTY

INDIVIDUAL'S NAME Dr. Xu Li
 ORGANIZATION'S NAME New Orleans Regional Planning Commission
 CONTACT'S POSITION GIS Analyst
 CONTACT'S ROLE originator

CONTACT INFORMATION ►

PHONE

VOICE (504) 483-8500
 FAX (504) 483-8526

ADDRESS

TYPE both
 DELIVERY POINT 10 Veterans Blvd.
 CITY New Orleans
 ADMINISTRATIVE AREA LA
 POSTAL CODE 70124
 COUNTRY US
 E-MAIL ADDRESS xuli@norpc.org

HOURS OF SERVICE

9a-5p CST

Hide Contact information ▲

RESPONSIBLE PARTY

INDIVIDUAL'S NAME Leslie Couvillion
 ORGANIZATION'S NAME Regional Planning Commission
 CONTACT'S POSITION Senior Planner
 CONTACT'S ROLE publisher

CONTACT INFORMATION ►

PHONE

VOICE 504-483-8536

ADDRESS

TYPE both
 DELIVERY POINT 10 Veterans Boulevard
 CITY New Orleans
 ADMINISTRATIVE AREA LA
 POSTAL CODE 70124
 COUNTRY US
 E-MAIL ADDRESS lcouvillion@norpc.org

HOURS OF SERVICE

9a-5p CST

Hide Contact information ▲

Hide Citation Contacts ▲

Resource Details ►

DATASET LANGUAGES * English (UNITED STATES)
 DATASET CHARACTER SET utf8 - 8 bit UCS Transfer Format

STATUS completed
 SPATIAL REPRESENTATION TYPE * vector

* PROCESSING ENVIRONMENT Version 6.2 (Build 9200) ; Esri ArcGIS 10.7.1.11595

CREDITS
 RPC 2019

ARCgis ITEM PROPERTIES

* NAME TIP2019to2022_NORPC_2019
 * SIZE 0.037
 * LOCATION file://
 \\norpc.org\data\RedBeans\MXDs\Leslie\AGOL\TIP2019to2022_NORPC_2019.shp
 * ACCESS PROTOCOL Local Area Network

[Hide Resource Details ▲](#)

Extents ►

EXTENT

DESCRIPTION

This layer represents Transportation Improvement Projects for the 2019-2022 report.

GEOGRAPHIC EXTENT

BOUNDING RECTANGLE

EXTENT TYPE Extent used for searching

* WEST LONGITUDE -90.682705

* EAST LONGITUDE -89.698800

* NORTH LATITUDE 30.941377

* SOUTH LATITUDE 29.663017

* EXTENT CONTAINS THE RESOURCE Yes

TEMPORAL EXTENT

BEGINNING DATE 2019-01-01 00:00:00

ENDING DATE 2022-12-31 00:00:00

EXTENT IN THE ITEM'S COORDINATE SYSTEM

* WEST LONGITUDE 724236.368400

* EAST LONGITUDE 815496.561500

* SOUTH LATITUDE 3285889.952600

* NORTH LATITUDE 3425467.432000

* EXTENT CONTAINS THE RESOURCE Yes

[Hide Extents ▲](#)

Resource Maintenance ►

RESOURCE MAINTENANCE

UPDATE FREQUENCY not planned

[Hide Resource Maintenance ▲](#)

Spatial Reference ►

ARCgis COORDINATE SYSTEM

* TYPE Projected

* GEOGRAPHIC COORDINATE REFERENCE GCS_North_American_1983
 * PROJECTION NAD_1983_UTM_Zone_15N
 * COORDINATE REFERENCE DETAILS
 PROJECTED COORDINATE SYSTEM
 WELL-KNOWN IDENTIFIER 26915
 X ORIGIN -5120900
 Y ORIGIN -9998100
 XY SCALE 450445547.3910538
 Z ORIGIN -100000
 Z SCALE 10000
 M ORIGIN -100000
 M SCALE 10000
 XY TOLERANCE 0.001
 Z TOLERANCE 0.001
 M TOLERANCE 0.001
 HIGH PRECISION true
 LATEST WELL-KNOWN IDENTIFIER 26915
 WELL-KNOWN TEXT PROJCS["NAD_1983_UTM_Zone_15N",GEOGCS
 ["GCS_North_American_1983",DATUM["D_North_American_1983",SPHEROID
 ["GRS_1980",6378137.0,298.257222101]],PRIMEM["Greenwich",0.0],UNIT
 ["Degree",0.0174532925199433]],PROJECTION["Transverse_Mercator"],PARAMETER
 ["False_Easting",500000.0],PARAMETER["False_Northing",0.0],PARAMETER
 ["Central_Meridian",-93.0],PARAMETER["Scale_Factor",0.9996],PARAMETER
 ["Latitude_Of_Origin",0.0],UNIT["Meter",1.0],AUTHORITY["EPSG",26915]]

REFERENCE SYSTEM IDENTIFIER

* VALUE 26915
 * CODESPACE EPSG
 * VERSION 6.13(3.0.1)

Hide Spatial Reference ▲

Spatial Data Properties ►

VECTOR ►

* LEVEL OF TOPOLOGY FOR THIS DATASET geometry only

GEOMETRIC OBJECTS

FEATURE CLASS NAME TIP2019to2022_NORPC_2019
 * OBJECT TYPE composite
 * OBJECT COUNT 237

Hide Vector ▲

ARCGIS FEATURE CLASS PROPERTIES ►

FEATURE CLASS NAME TIP2019to2022_NORPC_2019
 * FEATURE TYPE Simple
 * GEOMETRY TYPE Polyline
 * HAS TOPOLOGY FALSE
 * FEATURE COUNT 237
 * SPATIAL INDEX TRUE
 * LINEAR REFERENCING FALSE

Hide ArcGIS Feature Class Properties ▲

Hide Spatial Data Properties ▲

Lineage ▶

LINEAGE STATEMENT

This layer was created by the New Orleans Regional Planning Commission based on projects included in the TIP19-22 report, produced in accordance with the Federal Highway Administration regulations.

PROCESS STEP ▶

WHEN THE PROCESS OCCURRED 2019-01-01 00:00:00

DESCRIPTION

This layer was created by the New Orleans Regional Planning Commission based on projects included in the TIP19-22 report, produced in accordance with the Federal Highway Administration regulations. Features were digitized based upon road segment descriptions provided by the Louisiana Department of Transportation and Development.

PROCESS CONTACT

INDIVIDUAL'S NAME Dr. Xu Li

ORGANIZATION'S NAME New Orleans Regional Planning Commission

CONTACT'S POSITION GIS Analyst

CONTACT'S ROLE originator

CONTACT INFORMATION ▶

PHONE

VOICE (504) 483-8500

FAX (504) 483-8526

ADDRESS

TYPE both

DELIVERY POINT 10 Veterans Blvd.

CITY New Orleans

ADMINISTRATIVE AREA LA

POSTAL CODE 70124

COUNTRY US

E-MAIL ADDRESS xuli@norpc.org

HOURS OF SERVICE

9a-5p CST

Hide Contact information ▲

Hide Process step ▲

Hide Lineage ▲

Distribution ▶

DISTRIBUTION FORMAT

* NAME Shapefile

TRANSFER OPTIONS

* TRANSFER SIZE 0.037

Hide Distribution ▲

Fields ▶

DETAILS FOR OBJECT TIP2019to2022_NORPC_2019 ▶

- * TYPE Feature Class
- * ROW COUNT 237

FIELD FID ▶

- * ALIAS FID
- * DATA TYPE OID
- * WIDTH 4
- * PRECISION 0
- * SCALE 0
- * FIELD DESCRIPTION
Internal feature number.
- * DESCRIPTION SOURCE
Esri
- * DESCRIPTION OF VALUES
Sequential unique whole numbers that are automatically generated.

Hide Field FID ▲

FIELD Shape ▶

- * ALIAS Shape
- * DATA TYPE Geometry
- * WIDTH 0
- * PRECISION 0
- * SCALE 0
- * FIELD DESCRIPTION
Feature geometry.
- * DESCRIPTION SOURCE
Esri
- * DESCRIPTION OF VALUES
Coordinates defining the features.

Hide Field Shape ▲

FIELD Parish ▶

- * ALIAS Parish
- * DATA TYPE String
- * WIDTH 50
- * PRECISION 0
- * SCALE 0
- FIELD DESCRIPTION
Parish in which the project is located.
- DESCRIPTION SOURCE
RPC

[Hide Field Parish ▲](#)

FIELD FFY ►

- * ALIAS FFY
- * DATA TYPE String
- * WIDTH 100
- * PRECISION 0
- * SCALE 0

FIELD DESCRIPTION

Federal Fiscal Year in which the project takes place.

DESCRIPTION SOURCE

RPC

[Hide Field FFY ▲](#)

FIELD ProjectNum ►

- * ALIAS ProjectNum
- * DATA TYPE String
- * WIDTH 50
- * PRECISION 0
- * SCALE 0

FIELD DESCRIPTION

Project Number given to the project by the Louisiana Department of Transportation and Development. Usually begins with an "H".

DESCRIPTION SOURCE

RPC

[Hide Field ProjectNum ▲](#)

FIELD ProjectNam ►

- * ALIAS ProjectNam
- * DATA TYPE String
- * WIDTH 100
- * PRECISION 0
- * SCALE 0

FIELD DESCRIPTION

Project Name provided by the Louisiana Department of Transportation and Development.

DESCRIPTION SOURCE

RPC

[Hide Field ProjectNam ▲](#)

FIELD ProjectCat ►

- * ALIAS ProjectCat
- * DATA TYPE String
- * WIDTH 50
- * PRECISION 0
- * SCALE 0

FIELD DESCRIPTION

Project Category provided by the Louisiana Department of Transportation and Development.

DESCRIPTION SOURCE
RPC

[Hide Field ProjectCat ▲](#)

FIELD ImprovementType ▶

ALIAS ImprovementType

* DATA TYPE String

* WIDTH 150

* PRECISION 0

* SCALE 0

FIELD DESCRIPTION

Improvement Type provided by the Louisiana Department of Transportation and Development.

DESCRIPTION SOURCE
RPC

[Hide Field ImprovementType ▲](#)

FIELD TotalCost ▶

* ALIAS TotalCost

* DATA TYPE Double

* WIDTH 19

* PRECISION 0

* SCALE 0

FIELD DESCRIPTION

Total Cost of the project, including Federal Transportation fundings, local matches and other sources.

DESCRIPTION SOURCE
RPC

[Hide Field TotalCost ▲](#)

FIELD SHAPE_Leng ▶

* ALIAS SHAPE_Leng

* DATA TYPE Double

* WIDTH 19

* PRECISION 0

* SCALE 0

[Hide Field SHAPE_Leng ▲](#)

[Hide Details for object TIP2019to2022_NORPC_2019 ▲](#)

[Hide Fields ▲](#)

Metadata Details ▶

* METADATA LANGUAGE English (UNITED STATES)

* METADATA CHARACTER SET utf8 - 8 bit UCS Transfer Format

SCOPE OF THE DATA DESCRIBED BY THE METADATA * dataset
SCOPE NAME * dataset

* LAST UPDATE 2021-04-07

ARCGIS METADATA PROPERTIES

METADATA FORMAT ArcGIS 1.0
METADATA STYLE FGDC CSDGM Metadata
STANDARD OR PROFILE USED TO EDIT METADATA FGDC

CREATED IN ARCGIS FOR THE ITEM 2020-03-30 12:40:49
LAST MODIFIED IN ARCGIS FOR THE ITEM 2021-04-07 15:54:49

AUTOMATIC UPDATES

HAVE BEEN PERFORMED Yes
LAST UPDATE 2021-04-07 15:54:49

[Hide Metadata Details ▲](#)

Metadata Contacts ►

METADATA CONTACT

INDIVIDUAL'S NAME Lynn Dupont
ORGANIZATION'S NAME Regional Planning Commission
CONTACT'S POSITION Principal Planner
CONTACT'S ROLE point of contact

CONTACT INFORMATION ►

PHONE
VOICE 504-483-8514

ADDRESS

TYPE both
DELIVERY POINT 10 Veterans Boulevard
CITY New Orleans
ADMINISTRATIVE AREA LA
POSTAL CODE 70124
COUNTRY US
E-MAIL ADDRESS ldupont@norpc.org

HOURS OF SERVICE

9a-5p CST

[Hide Contact information ▲](#)

[Hide Metadata Contacts ▲](#)

Thumbnail and Enclosures ►

THUMBNAIL

THUMBNAIL TYPE JPG

[Hide Thumbnail and Enclosures ▲](#)

FGDC Metadata (read-only) ▼