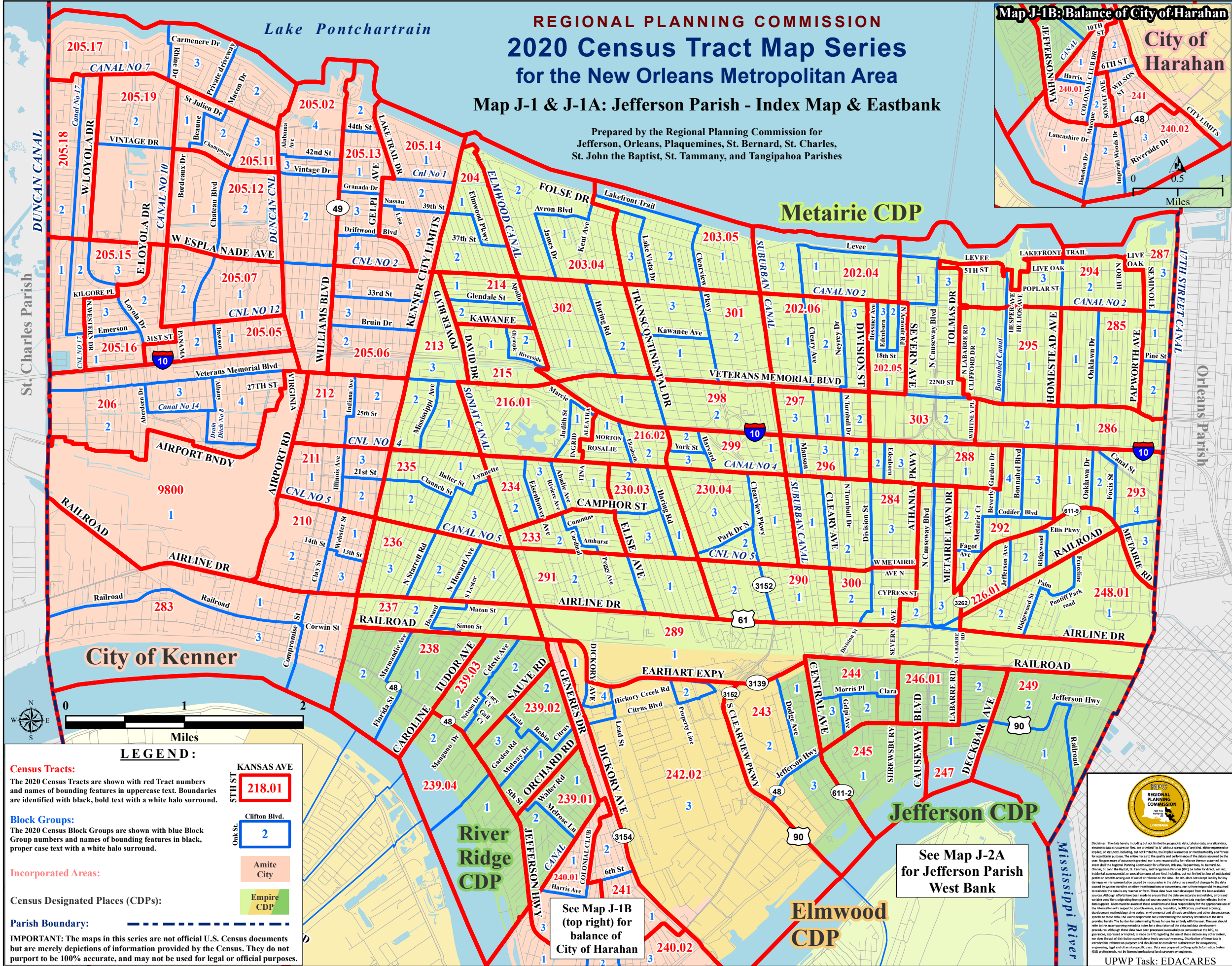
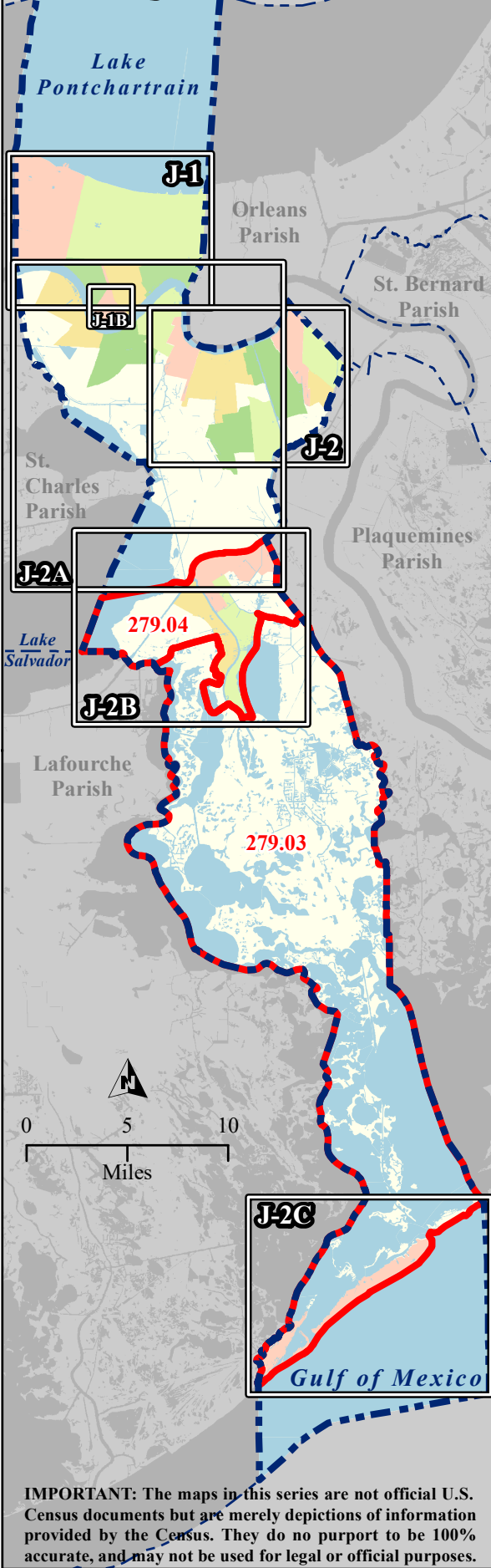
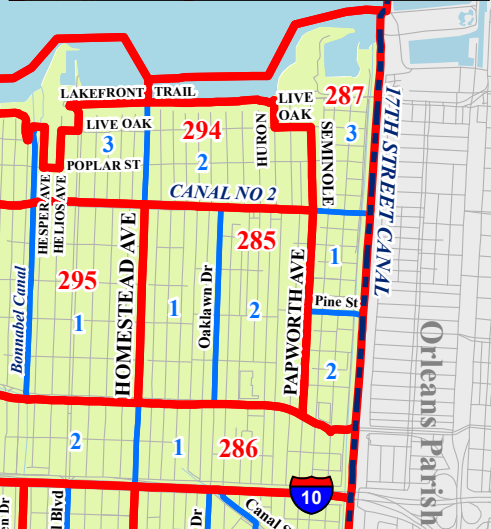


Map J-1A: Total Area of Jefferson Parish Including Tracts 279.03 and 279.04



Map J-1B: Balance of City of Harahan



LEGEND:

- Census Tracts:** The 2020 Census Tracts are shown with red Tract numbers and names of bounding features in uppercase text. Boundaries are identified with black, bold text with a white halo surround.
- Block Groups:** The 2020 Census Block Groups are shown with blue Block Group numbers and names of bounding features in black, proper case text with a white halo surround.
- Incorporated Areas:**
 - Amite City
 - Empire CDP
- Census Designated Places (CDPs):**
 - River Ridge CDP
 - Metairie CDP
 - Elmwood CDP
- Parish Boundary:**

EXAMPLES:

- Census Tract:** KANSAS AVE, 218.01
- Block Group:** Clifton Blvd., 2

IMPORTANT: The maps in this series are not official U.S. Census documents but are merely depictions of information provided by the Census. They do not purport to be 100% accurate, and may not be used for legal or official purposes.

See Map J-2A for Jefferson Parish West Bank

See Map J-1B (top right) for balance of City of Harahan

See Map J-2B for Jefferson Parish Eastbank

UPWP Task: EDACARES