

Disclaimer: The data herein, including but not limited to geographic data, tabular data, analytical data, electronic data structures or files, are provided "as is" without warranty of any kind, either expressed or implied, or statutory, including, but not limited to, the implied warranties of merchantability and fitness for a particular purpose. The entire risk as to the quality and performance of the data is assumed by the user. No guarantee of accuracy is granted, nor is any responsibility for reliance thereon assumed. In no event shall the Regional Planning Commission for Jefferson, Orleans, Plaquemines, St. Bernard, St. Charles, St. John the Baptist, St. Tammany, and Tangipahoa Parishes (RPC) be liable for direct, indirect, incidental, consequential, or special damages of any kind, including, but not limited to, loss of anticipated profits or benefits arising out of use of or reliance on the data. The RPC does not accept liability for any damages or misrepresentation caused by inaccuracies in the data or as a result of changes to the data caused by system transfers or other transformations or conversions, nor is there responsibility assumed to maintain the data in any manner or form. These data have been developed from the best available sources. Although efforts have been made to ensure that the data are accurate and reliable, errors and variable conditions originating from physical sources used to develop the data may be reflected in the data supplied. Users must be aware of these conditions and bear responsibility for the appropriate use of the information with respect to possible errors, scale, resolution, rectification, positional accuracy, development methodology, time period, environmental and climatic conditions and other circumstances specific to these data. The user is responsible for understanding the accuracy limitations of the data provided herein. The burden for determining fitness for use lies entirely with the user. The user should refer to the accompanying metadata notes for a description of the data and data development procedures. Although these data have been processed successfully on computers at the RPC, no guarantee, expressed or implied, is made by RPC regarding the use of these data on any other system, nor does the act of distribution constitute or imply any such warranty. Distribution of these data is intended for information purposes and should not be considered authoritative for navigational, engineering, legal and other site-specific uses. Data was prepared by Geographic Information System (GIS) professionals, not by licensed professional land surveyors or engineers.

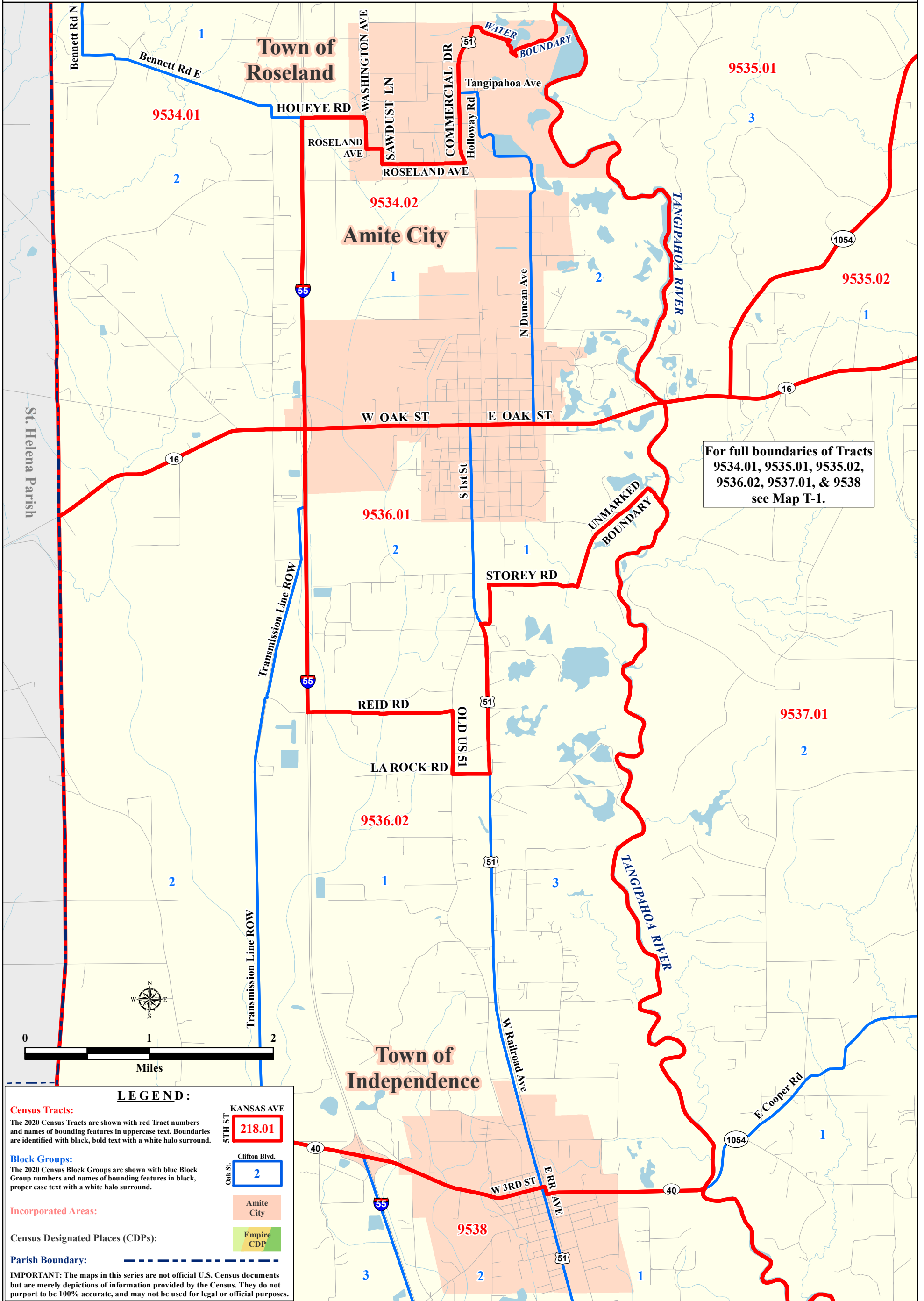
REGIONAL PLANNING COMMISSION 2020 Census Tract Map Series for the New Orleans Metropolitan Area

Map T-2: Tangipahoa Parish - City of Amite, Town of Independence, and Town of Roseland

Prepared by the Regional Planning Commission for
Jefferson, Orleans, Plaquemines, St. Bernard, St. Charles,
St. John the Baptist, St. Tammany, and Tangipahoa Parishes



UPWP Task: EDACARES



For full boundaries of Tracts
9534.01, 9535.01, 9535.02,
9536.02, 9537.01, & 9538
see Map T-1.



LEGEND:

Census Tracts:
The 2020 Census Tracts are shown with red Tract numbers and names of bounding features in uppercase text. Boundaries are identified with black, bold text with a white halo surround.

Block Groups:
The 2020 Census Block Groups are shown with blue Block Group numbers and names of bounding features in black, proper case text with a white halo surround.

Incorporated Areas:
Amite City

Census Designated Places (CDPs):
Empire CDP

Parish Boundary:

IMPORTANT: The maps in this series are not official U.S. Census documents but are merely depictions of information provided by the Census. They do not purport to be 100% accurate, and may not be used for legal or official purposes.