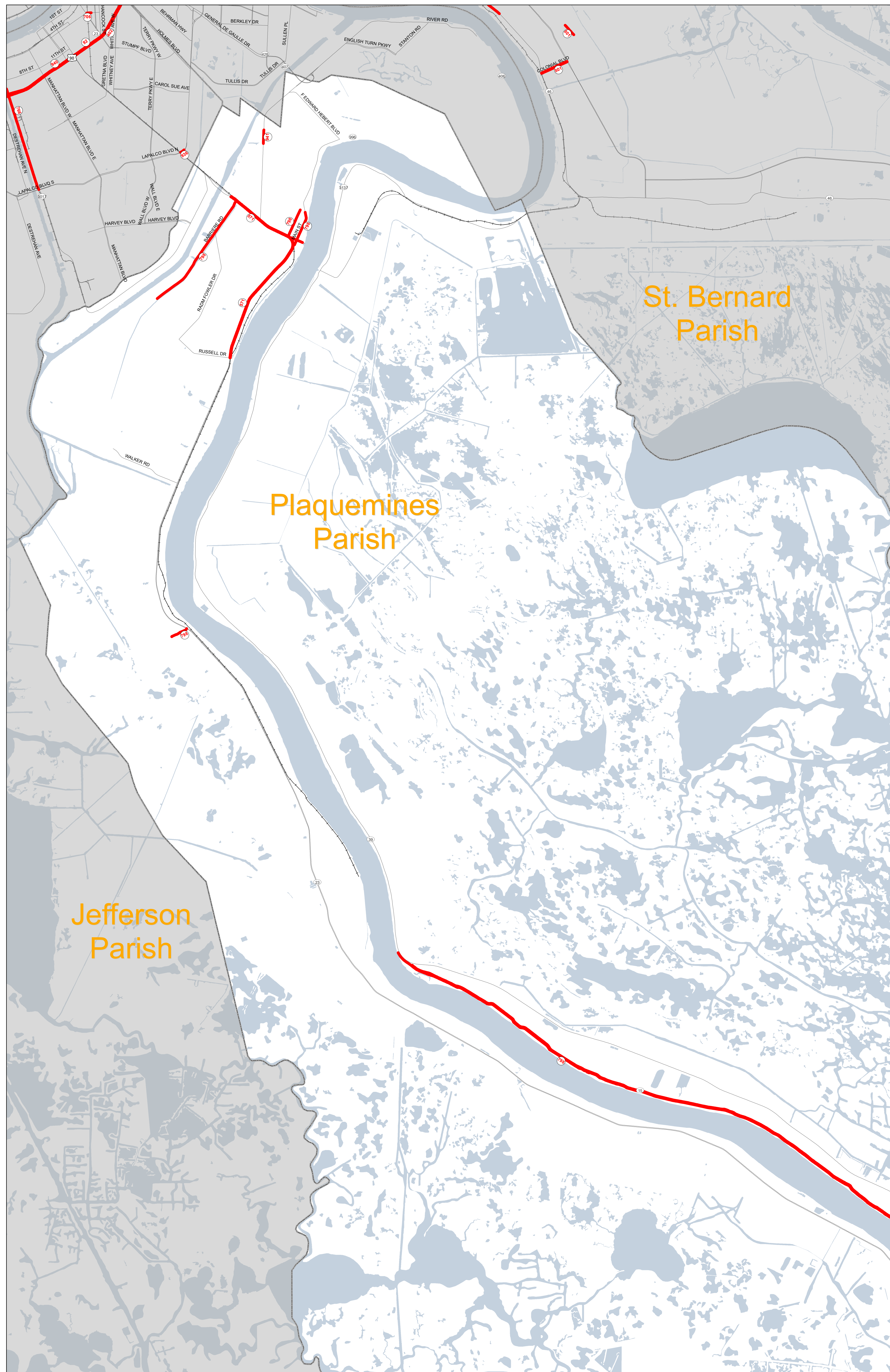
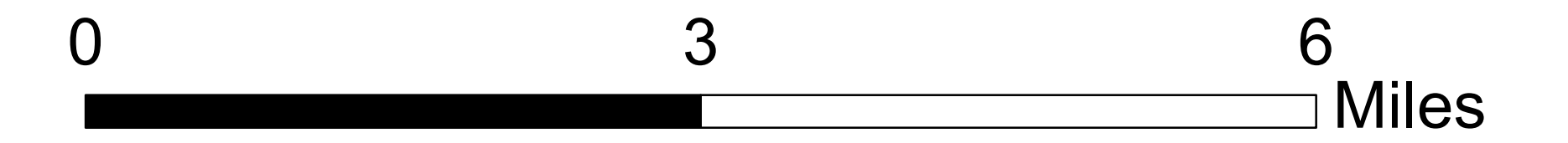


FY21 Let Projects Plaquemines Parish, Louisiana

Prepared by
Regional Planning Commission for
Jefferson, Orleans, Plaquemines, St. Bernard,
St. Charles, St. John the Baptist, St. Tammany
and Tangipahoa Parishes
3/8/2022



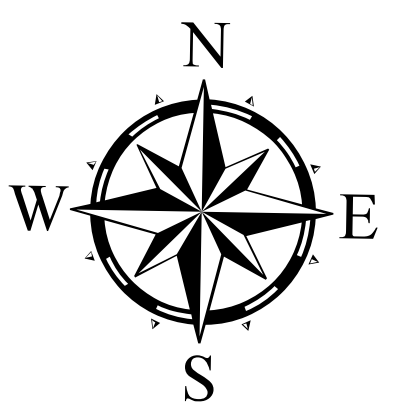
St. Bernard
Parish

Plaquemines
Parish

Jefferson
Parish



Disclaimer: The data herein, including but not limited to geographic data, tabular data, analytical data, electronic data structures or files, are provided "as is" without warranty of any kind, either expressed or implied, or statutory, including, but not limited to, the implied warranties or merchantability and fitness for a particular purpose. The entire risk as to the quality and performance of the data is assumed by the user. No guarantee of accuracy is granted, nor is any responsibility for reliance thereon assumed. In no event shall the Regional Planning Commission for Jefferson, Orleans, Plaquemines, St. Bernard, St. Charles, St. John the Baptist, St. Tammany, and Tangipahoa Parishes (RPC) be liable for direct, indirect, incidental, consequential, or special damages of any kind, including, but not limited to, loss of anticipated profits or benefits arising out of use of or reliance on the data. The RPC does not accept liability for any damages or misrepresentation caused by inaccuracies in the data or as a result of changes to the data caused by system transfers or other transformations or conversions, nor is there responsibility assumed to maintain the data in any manner or form. These data have been developed from the best available sources. Although efforts have been made to ensure that the data are accurate and reliable, errors and variable conditions originating from physical sources used to develop the data may be reflected in the data supplied. Users must be aware of these conditions and bear responsibility for the appropriate use of the information with respect to possible errors, scale, resolution, notification, positional accuracy, development methodology, time period, environmental and climatic conditions, and other circumstances specific to these data. The user is responsible for understanding the accuracy limitations of the data provided herein. The burden for determining fitness for use lies entirely with the user. The user should refer to the accompanying metadata notes for a description of the data and data development procedures. Although these data have been processed accurately on computers at the RPC, no guarantee, expressed or implied, is made by RPC regarding the use of these data on any other system, nor does the act of distribution constitute or imply any such warranty. Distribution of these data is intended for information purposes and should not be considered authoritative for navigation, engineering, legal and other site-specific uses. Data was prepared by Geographic Information System (GIS) professionals, not by licensed professional land surveyors or engineers.



RPCID	Tip Area	PARISH	LET DATE	SPN	PROJECT TITLE	TYPE OF IMPROVEMENT	FUNDING SOURCE(S)	CONTINGENCY	FEDERAL SHARE	NONFEDERAL SHARE	PERCENT FED SHARE	ROUTE(S)	PROJECT LENGTH
798	NO	Plaquemines	5/12/2021	H.011949	RWD SIGNING PLAQUEMINES PARISH	SIGNING AND STRIPING	HSPIPPEN	\$1,586,984	\$1,586,984	\$0	100%		43.34
571	NO	Plaquemines	11/18/2020	H.012560	LA 23: TUNNEL - RUSSELL DR	COLD PLANE AND OVERLAY. APPLY NEW STRIPING AND MARKERS	NHPP	\$4,432,777	\$3,546,222	\$886,555	80%	LA 23	4.29
941	NO	Plaquemines	6/23/2021	H.014487	LA 406: LT. TURN LANE AT GREEN TRAILS DR	ADD LEFT TURN LANE ON LA 406 AT GREEN TRAILS DR.	STPFLEX	\$1,178,900	\$943,120	\$235,780	80%	LA 406	0.30