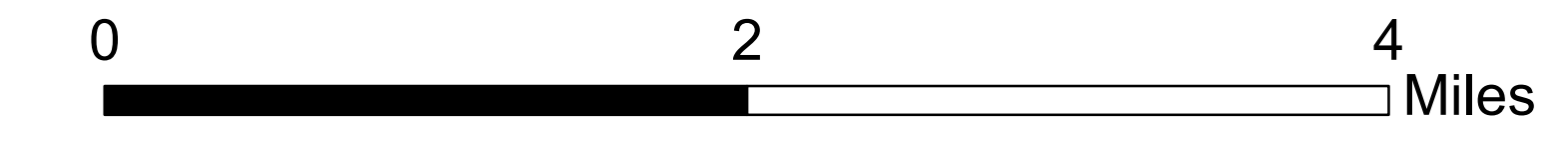
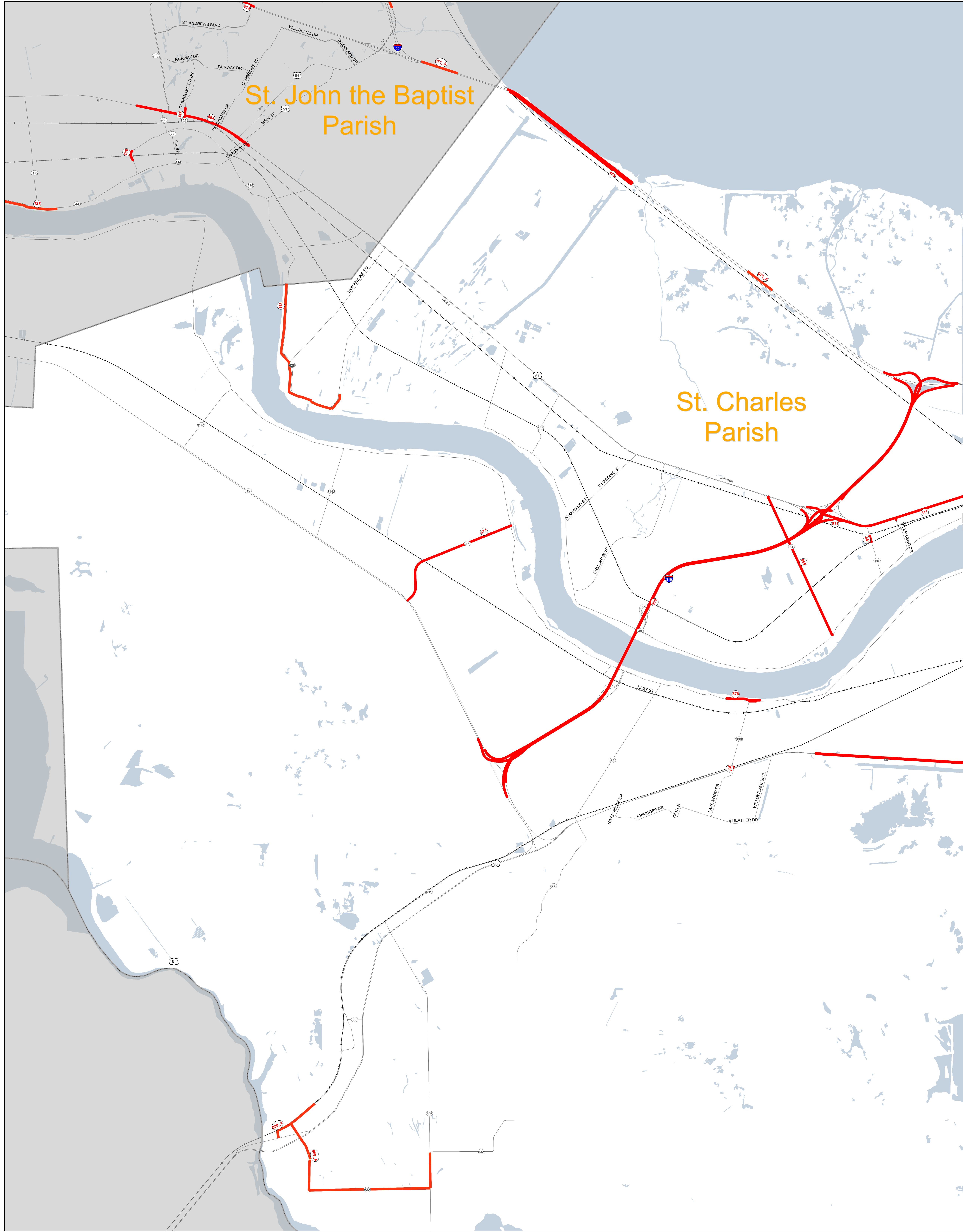
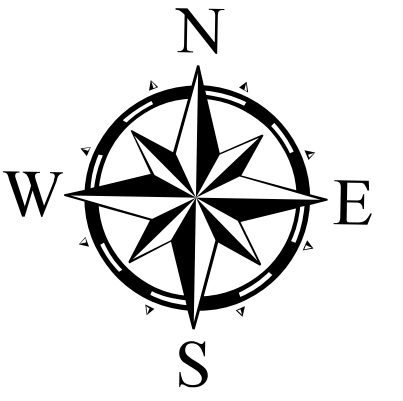


# FY21 Obligated Projects St. Charles Parish, Louisiana

Prepared by  
Regional Planning Commission for  
Jefferson, Orleans, Plaquemines, St. Bernard,  
St. Charles, St. John the Baptist, St. Tammany  
and Tangipahoa Parishes  
12/10/2021



Disclaimer: The data herein, including but not limited to geographic data, tabular data, analytical data, electronic data structures or files, are provided "as is" without warranty of any kind, either expressed or implied, or statutory, including, but not limited to, the implied warranties of merchantability and fitness for a particular purpose. The entire risk as to the quality and performance of the data is assumed by the user. No guarantee of accuracy is granted, nor is any responsibility for reliance thereon assumed. In no event shall the Regional Planning Commission for Jefferson, Orleans, Plaquemines, St. Bernard, St. Charles, St. John the Baptist, St. Tammany and Tangipahoa Parishes (RPC) be liable for direct, indirect, incidental, consequential, or special damages of any kind, including, but not limited to, loss of anticipated profits or benefits arising out of use of or reliance on the data. The RPC does not accept liability for any damages or misrepresentation caused by inaccuracies in the data or as a result of changes to the data caused by system upgrades or other transformations or conversions, nor is there responsibility assumed to maintain the data in any manner or form. These data have been developed from the best available sources. Although efforts have been made to ensure that the data are accurate and reliable, errors and variable conditions originating from physical sources used to develop the data may be reflected in the data supplied. Users must be aware of these conditions and bear responsibility for the appropriate use of the information with respect to possible errors, omissions, misstatements, and other inaccuracies. Development methodology, time period, environmental and climatic conditions and other circumstances specific to these data. The user is responsible for understanding the accuracy and limitations of the data provided herein. The burden for determining fitness for use lies entirely with the user. The user should refer to the accompanying metadata notes for a description of the data and data development procedures. Although these data have been processed successfully on computers at the RPC, no guarantee, expressed or implied, is made by RPC regarding the use of these data on any other system, nor does the act of distribution constitute or imply any such warranty. Distribution of these data is intended for information purposes and should not be considered authoritative for navigational, engineering, legal and other site-specific uses. Data was prepared by Geographic Information System (GIS) professionals, not by licensed professional land surveyors or engineers.



FFY	RPCO	SPN	Project Title	Type of Improvement	SPONSORS	PARISHES	ROUTES	Phase	Funding Source	Percent Share	Federal Funds Obligated	Non-Federal Funds Obligated	Sum of Funds Obligated	Programmed in Current FY	Non-Federal Funds Programmed in Current FY	Remaining Federal Funds Per Project	Remaining Federal Funds Per Project at Project Close	Total Remaining Funds Per Project	Total Remaining Funds Per Project at Project Close	
FFY 21	111	N000305	62-98 OVERPASS - LA 50	MILL AND OVERLAY	DOTD	JEFFERSON	US 61	Construction	HAPP	80	\$58,436	\$36,646	\$195,126	90	\$0	\$0	\$136,690	\$136,690	\$136,690	
FFY 21	111	N000763	ST CHARLES SHAW LEVEE MAINTENANCE PHASE 2	MULTI-USE PATH & RELATED WORK	DOTD	ST CHARLES		Construction	STP-200K	80	\$37,280	\$12,480	\$49,760	N/A	\$0	\$0	\$49,760	\$49,760	\$49,760	
FFY 21	410	N014721	30 RICHMOND CARRIAGE EMERGENCY CROSSINGS		DOTD	ST CHARLES		Construction	STP-200K	80	\$18,250	\$4,068	\$22,318	\$18,250	\$4,068	\$0	\$0	\$18,250	\$18,250	\$18,250
FFY 21	410	N014722	30 RICHMOND CARRIAGE EMERGENCY CROSSINGS		DOTD	ST CHARLES		Construction	STP-200K	80	\$18,250	\$4,068	\$22,318	\$18,250	\$4,068	\$0	\$0	\$18,250	\$18,250	\$18,250
FFY 21	410	N014723	30 RICHMOND CARRIAGE EMERGENCY CROSSINGS		DOTD	ST CHARLES		Construction	STP-200K	80	\$18,250	\$4,068	\$22,318	\$18,250	\$4,068	\$0	\$0	\$18,250	\$18,250	\$18,250
FFY 21	410	N014724	30 RICHMOND CARRIAGE EMERGENCY CROSSINGS		DOTD	ST CHARLES		Construction	STP-200K	80	\$18,250	\$4,068	\$22,318	\$18,250	\$4,068	\$0	\$0	\$18,250	\$18,250	\$18,250
FFY 21	410	N014725	30 RICHMOND CARRIAGE EMERGENCY CROSSINGS		DOTD	ST CHARLES		Construction	STP-200K	80	\$18,250	\$4,068	\$22,318	\$18,250	\$4,068	\$0	\$0	\$18,250	\$18,250	\$18,250
FFY 21	410	N014726	30 RICHMOND CARRIAGE EMERGENCY CROSSINGS		DOTD	ST CHARLES		Construction	STP-200K	80	\$18,250	\$4,068	\$22,318	\$18,250	\$4,068	\$0	\$0	\$18,250	\$18,250	\$18,250
FFY 21	410	N014727	30 RICHMOND CARRIAGE EMERGENCY CROSSINGS		DOTD	ST CHARLES		Construction	STP-200K	80	\$18,250	\$4,068	\$22,318	\$18,250	\$4,068	\$0	\$0	\$18,250	\$18,250	\$18,250
FFY 21	410	N014728	30 RICHMOND CARRIAGE EMERGENCY CROSSINGS		DOTD	ST CHARLES		Construction	STP-200K	80	\$18,250	\$4,068	\$22,318	\$18,250	\$4,068	\$0	\$0	\$18,250	\$18,250	\$18,250
FFY 21	410	N014729	30 RICHMOND CARRIAGE EMERGENCY CROSSINGS		DOTD	ST CHARLES		Construction	STP-200K	80	\$18,250	\$4,068	\$22,318	\$18,250	\$4,068	\$0	\$0	\$18,250	\$18,250	\$18,250
FFY 21	410	N014730	30 RICHMOND CARRIAGE EMERGENCY CROSSINGS		DOTD	ST CHARLES		Construction	STP-200K	80	\$18,250	\$4,068	\$22,318	\$18,250	\$4,068	\$0	\$0	\$18,250	\$18,250	\$18,250
FFY 21	410	N014731	30 RICHMOND CARRIAGE EMERGENCY CROSSINGS		DOTD	ST CHARLES		Construction	STP-200K	80	\$18,250	\$4,068	\$22,318	\$18,250	\$4,068	\$0	\$0	\$18,250	\$18,250	\$18,250
FFY 21	410	N014732	30 RICHMOND CARRIAGE EMERGENCY CROSSINGS		DOTD	ST CHARLES		Construction	STP-200K	80	\$18,250	\$4,068	\$22,318	\$18,250	\$4,068	\$0	\$0	\$18,250	\$18,250	\$18,250
FFY 21	410	N014733	30 RICHMOND CARRIAGE EMERGENCY CROSSINGS		DOTD	ST CHARLES		Construction	STP-200K	80	\$18,250	\$4,068	\$22,318	\$18,250	\$4,068	\$0	\$0	\$18,250	\$18,250	\$18,250
FFY 21	410	N014734	30 RICHMOND CARRIAGE EMERGENCY CROSSINGS		DOTD	ST CHARLES		Construction	STP-200K	80	\$18,250	\$4,068	\$22,318	\$18,250	\$4,068	\$0	\$0	\$18,250	\$18,250	\$18,250
FFY 21	410	N014735	30 RICHMOND CARRIAGE EMERGENCY CROSSINGS		DOTD	ST CHARLES		Construction	STP-200K	80	\$18,250	\$4,068	\$22,318	\$18,250	\$4,068	\$0	\$0	\$18,250	\$18,250	\$18,250
FFY 21	410	N014736	30 RICHMOND CARRIAGE EMERGENCY CROSSINGS		DOTD	ST CHARLES		Construction	STP-200K	80	\$18,250	\$4,068	\$22,318	\$18,250	\$4,068	\$0	\$0	\$18,250	\$18,250	\$18,250
FFY 21	410	N014737	30 RICHMOND CARRIAGE EMERGENCY CROSSINGS		DOTD	ST CHARLES		Construction	STP-200K	80	\$18,250	\$4,068	\$22,318	\$18,250	\$4,068	\$0	\$0	\$18,250	\$18,250	\$18,250
FFY 21	410	N014738	30 RICHMOND CARRIAGE EMERGENCY CROSSINGS		DOTD	ST CHARLES		Construction	STP-200K	80	\$18,250	\$4,068	\$22,318	\$18,250	\$4,068	\$0	\$0	\$18,250	\$18,250	\$18,250
FFY 21	410	N014739	30 RICHMOND CARRIAGE EMERGENCY CROSSINGS		DOTD	ST CHARLES		Construction	STP-200K	80	\$18,250	\$4,068	\$22,318	\$18,250	\$4,068	\$0	\$0	\$18,250	\$18,250	\$18,250
FFY 21	410	N014740	30 RICHMOND CARRIAGE EMERGENCY CROSSINGS		DOTD	ST CHARLES		Construction	STP-200K	80	\$18,250	\$4,068	\$22,318	\$18,250	\$4,068	\$0	\$0	\$18,250	\$18,250	\$18,250
FFY 21	410	N014741	30 RICHMOND CARRIAGE EMERGENCY CROSSINGS		DOTD	ST CHARLES		Construction	STP-200K	80	\$18,250	\$4,068	\$22,318	\$18,250	\$4,068	\$0	\$0	\$18,250	\$18,250	\$18,250
FFY 21	410	N014742	30 RICHMOND CARRIAGE EMERGENCY CROSSINGS		DOTD	ST CHARLES		Construction	STP-200K	80	\$18,250	\$4,068	\$22,318	\$18,250	\$4,068	\$0	\$0	\$18,250	\$18,250	\$18,250
FFY 21	410	N014743	30 RICHMOND CARRIAGE EMERGENCY CROSSINGS		DOTD	ST CHARLES		Construction	STP-200K	80	\$18,250	\$4,068	\$22,318	\$18,250	\$4,068	\$0	\$0	\$18,250	\$18,250	\$18,250
FFY 21	410	N014744	30 RICHMOND CARRIAGE EMERGENCY CROSSINGS		DOTD	ST CHARLES		Construction	STP-200K	80	\$18,250	\$4,068	\$22,318	\$18,250	\$4,068	\$0	\$0	\$18,250	\$18,250	\$18,250
FFY 21	410	N014745	30 RICHMOND CARRIAGE EMERGENCY CROSSINGS		DOTD	ST CHARLES		Construction	STP-200K	80	\$18,250	\$4,068	\$22,318	\$18,250	\$4,068	\$0	\$0	\$18,250	\$18,250	\$18,250
FFY 21	410	N014746	30 RICHMOND CARRIAGE EMERGENCY CROSSINGS		DOTD	ST CHARLES		Construction	STP-200K	80	\$18,250	\$4,068	\$22,318	\$18,250	\$4,068	\$0	\$0	\$18,250	\$18,250	\$18,250
FFY 21	410	N014747	30 RICHMOND CARRIAGE EMERGENCY CROSSINGS		DOTD	ST CHARLES		Construction	STP-200K	80	\$18,250	\$4,068	\$22,318	\$18,250	\$4,068	\$0	\$0	\$18,250	\$18,250	\$18,250
FFY 21	410	N014748	30 RICHMOND CARRIAGE EMERGENCY CROSSINGS		DOTD	ST CHARLES		Construction	STP-200K	80	\$18,250	\$4,068	\$22,318	\$18,250	\$4,068	\$0	\$0	\$18,250	\$18,250	\$18,250
FFY 21	410	N014749	30 RICHMOND CARRIAGE EMERGENCY CROSSINGS		DOTD	ST CHARLES		Construction	STP-200K	80	\$18,250	\$4,068	\$22,318	\$18,250	\$4,068	\$0	\$0	\$18,250	\$18,250	\$18,250
FFY 21	410	N014750	30 RICHMOND CARRIAGE EMERGENCY CROSSINGS		DOTD	ST CHARLES		Construction	STP-200K	80	\$18,250	\$4,068	\$22,318	\$18,250	\$4,068	\$0	\$0	\$18,250	\$18,250	\$18,250
FFY 21	410	N014751	30 RICHMOND CARRIAGE EMERGENCY CROSSINGS		DOTD	ST CHARLES		Construction	STP-200K	80	\$18,250	\$4,068	\$22,318	\$18,250	\$4,068	\$0	\$0	\$18,250	\$18,250	\$18,250
FFY 21	410	N014752	30 RICHMOND CARRIAGE EMERGENCY CROSSINGS		DOTD	ST CHARLES		Construction	STP-200K	80	\$18,250	\$4,068	\$22,318	\$18,250	\$4,068	\$0	\$0	\$18,250	\$18,250	\$18,250
FFY 21	410	N014753	30 RICHMOND CARRIAGE EMERGENCY CROSSINGS		DOTD	ST CHARLES		Construction	STP-200K	80	\$18,250	\$4,068	\$22,318	\$18,250	\$4,068	\$0	\$0	\$18,250	\$18,250	\$18,250
FFY 21	410	N014754	30 RICHMOND CARRIAGE EMERGENCY CROSSINGS		DOTD	ST CHARLES		Construction	STP-200K	80	\$18,250	\$4,068	\$22,318	\$18,250	\$4,068	\$0	\$0	\$18,250	\$18,250	\$18,250
FFY 21	410	N014755	30 RICHMOND CARRIAGE EMERGENCY CROSSINGS		DOTD	ST CHARLES		Construction	STP-200K	80	\$18,250	\$4,068	\$22,318	\$18,250	\$4,068	\$0	\$0	\$18,250	\$18,250	\$18,250
FFY 21	410	N014756	30 RICHMOND CARRIAGE EMERGENCY CROSSINGS		DOTD	ST CHARLES		Construction	STP-200K	80	\$18,250	\$4,068	\$22,318	\$18,250	\$4,068	\$0	\$0	\$18,250	\$18,250	\$18,250
FFY 21	410	N014757	30 RICHMOND CARRIAGE EMERGENCY CROSSINGS		DOTD	ST CHARLES		Construction	STP-200K	80	\$18,250	\$4,068	\$22,318	\$18,250	\$4,068	\$0	\$0	\$18,250	\$18,250	\$18,250
FFY 21	410	N014758	30 RICHMOND CARRIAGE EMERGENCY CROSSINGS		DOTD	ST CHARLES		Construction	STP-200K	80	\$18,250	\$4,068	\$22,318	\$18,250	\$4,068	\$0	\$0	\$18,250	\$18,250	\$18,250
FFY 21	410	N014759	30 RICHMOND CARRIAGE EMERGENCY CROSSINGS		DOTD	ST CHARLES		Construction	STP-200K	80	\$18,250	\$4,068	\$22,318	\$18,250	\$4,068	\$0	\$0	\$18,250	\$18,250	\$18,250
FFY 21	410	N014760	30 RICHMOND CARRIAGE EMERGENCY CROSSINGS		DOTD	ST CHARLES		Construction	STP-200K	80	\$18,250	\$4,068	\$22,318	\$18,250	\$4,068	\$0	\$0	\$18,250	\$18,250	\$18,250
FFY 21	410	N014761	30 RICHMOND CARRIAGE EMERGENCY CROSSINGS		DOTD	ST CHARLES		Construction	STP-200K	80	\$18,250	\$4,068	\$22,318	\$18,250	\$4,068	\$0	\$0	\$18,250	\$18,250	\$18,250
FFY 21	410	N014762	30 RICHMOND CARRIAGE EMERGENCY CROSSINGS		DOTD	ST CHARLES		Construction	STP-200K	80	\$18,250	\$4,068	\$22,318	\$18,250	\$4,068	\$0	\$0	\$18,250	\$18,250	\$18,250
FFY 21	410	N014763	30 RICHMOND CARRIAGE EMERGENCY CROSSINGS		DOTD	ST CHARLES		Construction	STP-200K	80	\$18,250	\$4,068	\$22,318	\$18,250	\$4,068	\$0	\$0	\$18,250	\$18,250	\$18,250
FFY 21	410	N014764	30 RICHMOND CARRIAGE EMERGENCY CROSSINGS		DOTD	ST CHARLES		Construction	STP-200K	80	\$18,250	\$4,068	\$22,318	\$18,250	\$4,068	\$0	\$0	\$18,250	\$18,250	\$18,250
FFY 21	410	N014765	30 RICHMOND CARRIAGE EMERGENCY CROSSINGS		DOTD	ST CHARLES		Construction	STP-200K	80	\$18,250	\$4,068	\$22,318	\$18,250	\$4,068	\$0	\$0	\$18,250	\$18,250	\$18,250
FFY 21	410	N014766	30 RICHMOND CARRIAGE EMERGENCY CROSSINGS		DOTD	ST CHARLES		Construction	STP-200K	80	\$18,250	\$4,068	\$22,318	\$18,250	\$4,068	\$0	\$0	\$18,250	\$18,250	\$18,250
FFY 21	410	N014767	30 RICHMOND CARRIAGE EMERGENCY CROSSINGS		DOTD	ST CHARLES		Construction	STP-200K	80	\$18,250	\$4,068	\$22,318	\$18,250	\$4,068	\$0	\$0	\$18,250	\$18,250	\$18,250
FFY 21	410	N014768	30 RICHMOND CARRIAGE EMERGENCY CROSSINGS		DOTD	ST CHARLES		Construction	STP-200K	80	\$18,250	\$4,068	\$22,318	\$18,250	\$4,068	\$0	\$0	\$18,250	\$18,250	\$18,250
FFY 21	410	N014769	30 RICHMOND CARRIAGE EMERGENCY CROSSINGS		DOTD	ST CHARLES														