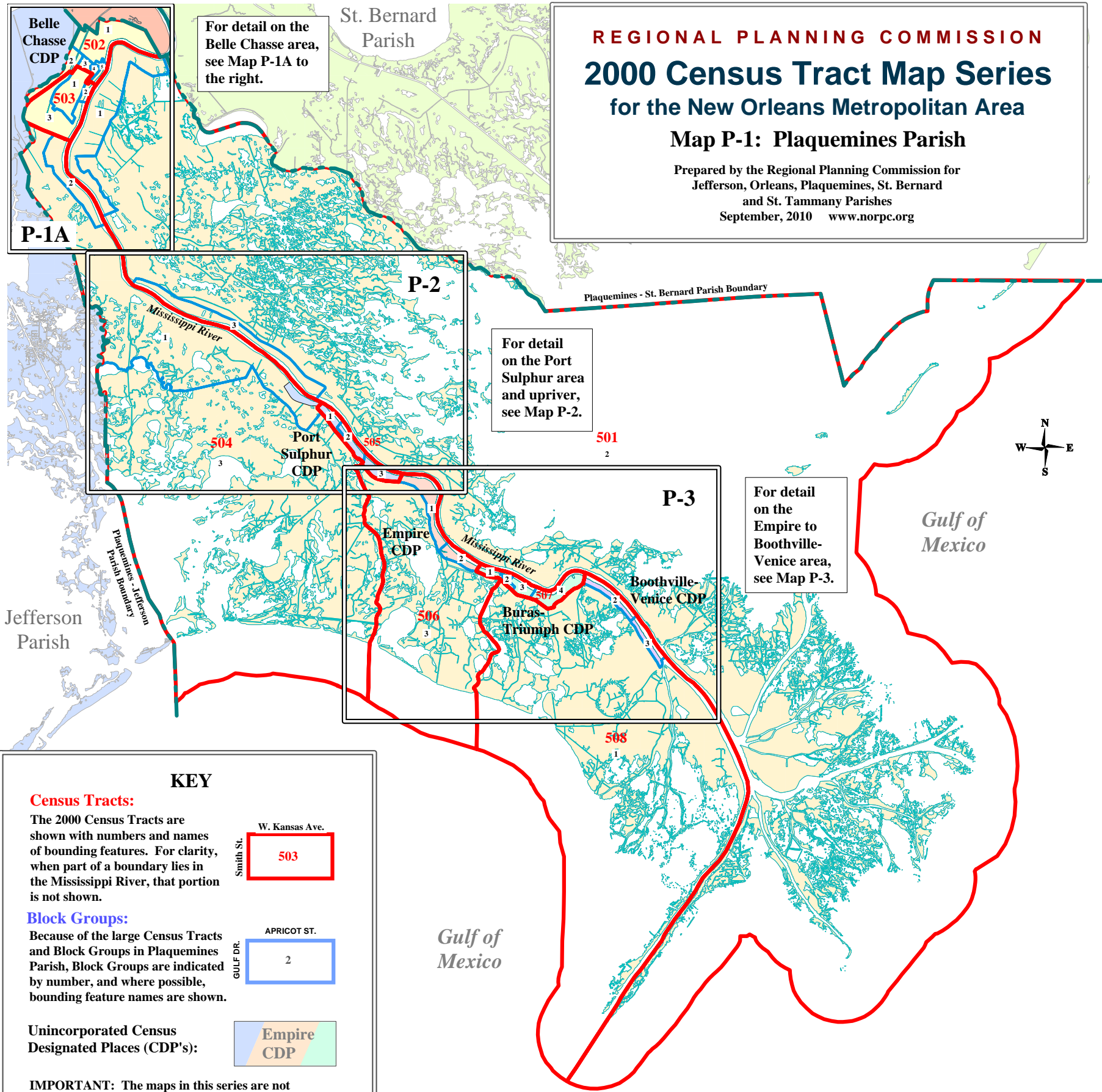


REGIONAL PLANNING COMMISSION
2000 Census Tract Map Series
 for the New Orleans Metropolitan Area
Map P-1: Plaquemines Parish
 Prepared by the Regional Planning Commission for
 Jefferson, Orleans, Plaquemines, St. Bernard
 and St. Tammany Parishes
 September, 2010 www.norpc.org



For detail on the Belle Chasse area, see Map P-1A to the right.

For detail on the Port Sulphur area and upriver, see Map P-2.

For detail on the Empire to Boothville-Venice area, see Map P-3.

KEY

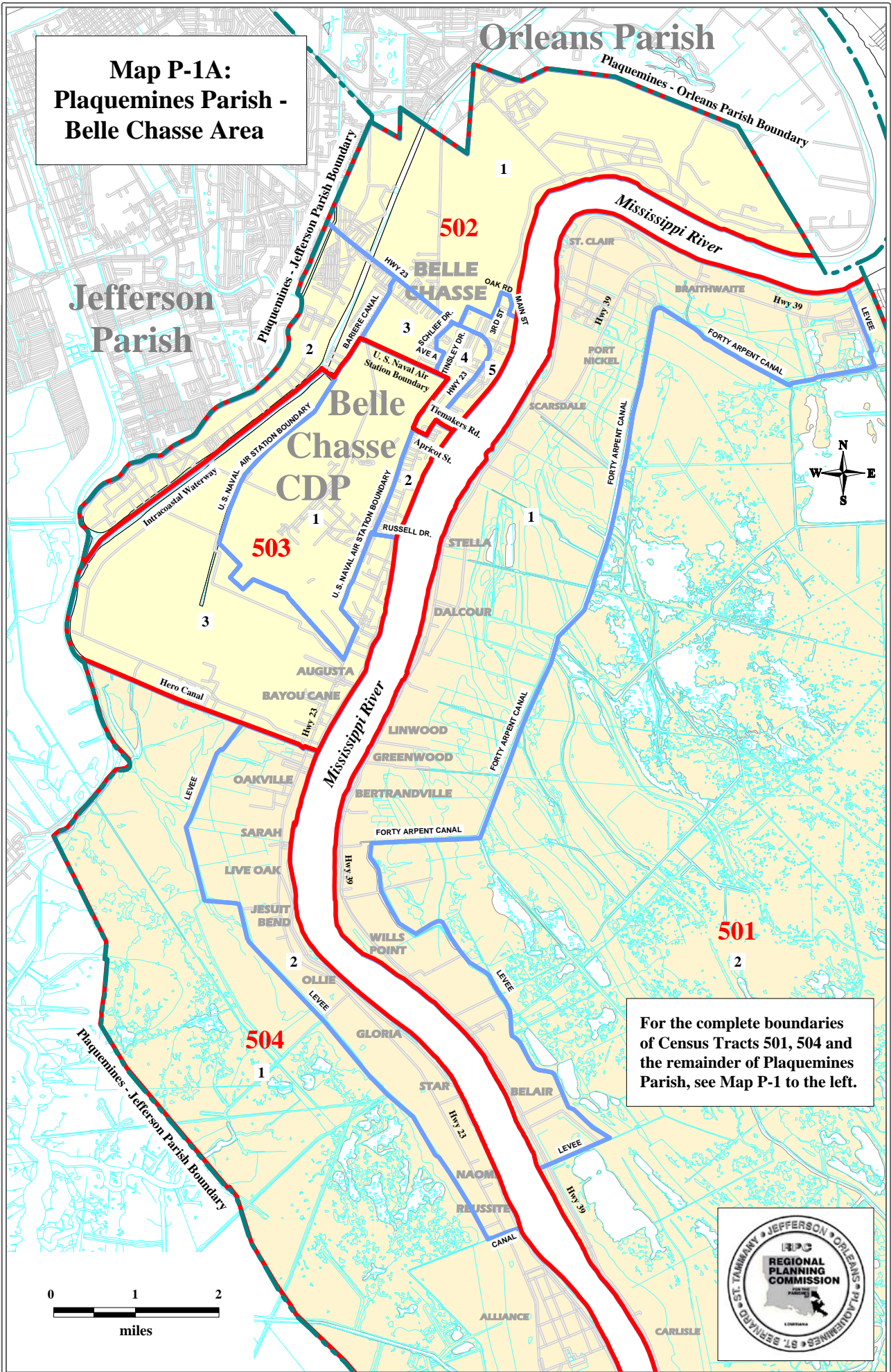
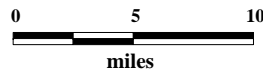
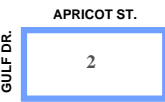
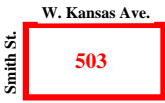
Census Tracts:
 The 2000 Census Tracts are shown with numbers and names of bounding features. For clarity, when part of a boundary lies in the Mississippi River, that portion is not shown.

Block Groups:
 Because of the large Census Tracts and Block Groups in Plaquemines Parish, Block Groups are indicated by number, and where possible, bounding feature names are shown.

Unincorporated Census Designated Places (CDP's):

IMPORTANT: The maps in this series are not official U.S. Census documents but are merely depictions of information provided by the Census. They do not purport to be 100% accurate, and may not be used for legal or official purposes.

© Copyright by the Regional Planning Commission
 September 2010.



Map P-1A:
Plaquemines Parish -
Belle Chasse Area

For the complete boundaries of Census Tracts 501, 504 and the remainder of Plaquemines Parish, see Map P-1 to the left.

