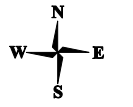


For complete boundaries of Census Tracts 501, 504, 506 and 508 and the remainder of Plaquemines Parish, see Map P-1.

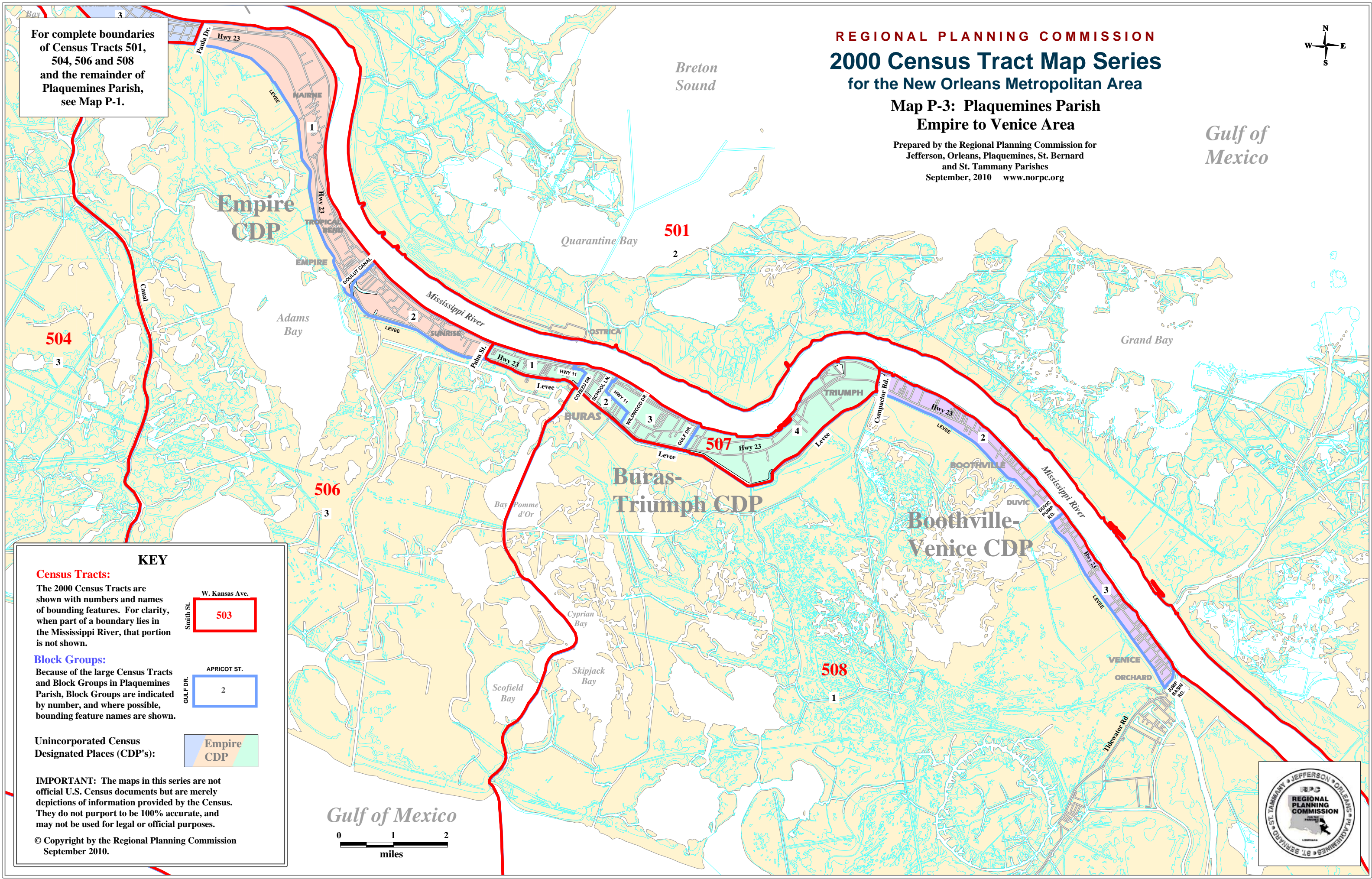
REGIONAL PLANNING COMMISSION
2000 Census Tract Map Series
 for the New Orleans Metropolitan Area



Map P-3: Plaquemines Parish
Empire to Venice Area

Prepared by the Regional Planning Commission for
 Jefferson, Orleans, Plaquemines, St. Bernard
 and St. Tammany Parishes
 September, 2010 www.norpc.org

Gulf of Mexico



KEY

Census Tracts:
 The 2000 Census Tracts are shown with numbers and names of bounding features. For clarity, when part of a boundary lies in the Mississippi River, that portion is not shown.

Block Groups:
 Because of the large Census Tracts and Block Groups in Plaquemines Parish, Block Groups are indicated by number, and where possible, bounding feature names are shown.

Unincorporated Census Designated Places (CDP's):

IMPORTANT: The maps in this series are not official U.S. Census documents but are merely depictions of information provided by the Census. They do not purport to be 100% accurate, and may not be used for legal or official purposes.

© Copyright by the Regional Planning Commission
 September 2010.

