



Prepared by the  
Regional Planning Commission  
December 2023

Disclaimer: The data herein, including but not limited to geographic data, tabular data, analytical data, electronic data structures or files, are provided "as is" without warranty of any kind, either expressed or implied, including, but not limited to, the implied warranties of merchantability and fitness for a particular purpose. The entire risk as to the quality and performance of the data is assumed by the user. No representation of accuracy is granted, nor is any responsibility for reliance thereon assumed, in no event shall the Regional Planning Commission be liable for any damages, including, but not limited to, direct, indirect, incidental, consequential, or special damages of any kind, including, but not limited to, loss of anticipated profits or benefits arising out of use of or reliance on the data. The RPC does not accept liability for any damages or compensation claims for inaccuracies in the data or as a result of changes in the data caused by system transfers or other transformations or conversions, nor is there responsibility assumed to maintain the data in any manner or form. These data have been developed from the best available sources. Although efforts have been made to ensure that the data are accurate and reliable, errors and data omissions are inevitable. Users must be aware of these conditions and bear responsibility for the appropriate use of the information with respect to possible errors, omissions, misstatements, misinterpretations, misapplications, misuses, or other consequences. The user is responsible for understanding the accuracy limitations of the data provided herein. The burden for determining those for use lies entirely with the user. The user should refer to the accompanying metadata notes for a description of the data and data development procedures. Although these data have been processed according to the standards of the RPC, no guarantee, expressed or implied, is made by the RPC regarding the use of these data as any other matter, nor does the use of these data constitute or imply any endorsement, distribution, or other support for information purposes and should not be considered authoritative for navigation, engineering, legal and other specific uses. Data was prepared by Geographic Information Systems (GIS) professionals, not by licensed professional land surveyors or engineers.

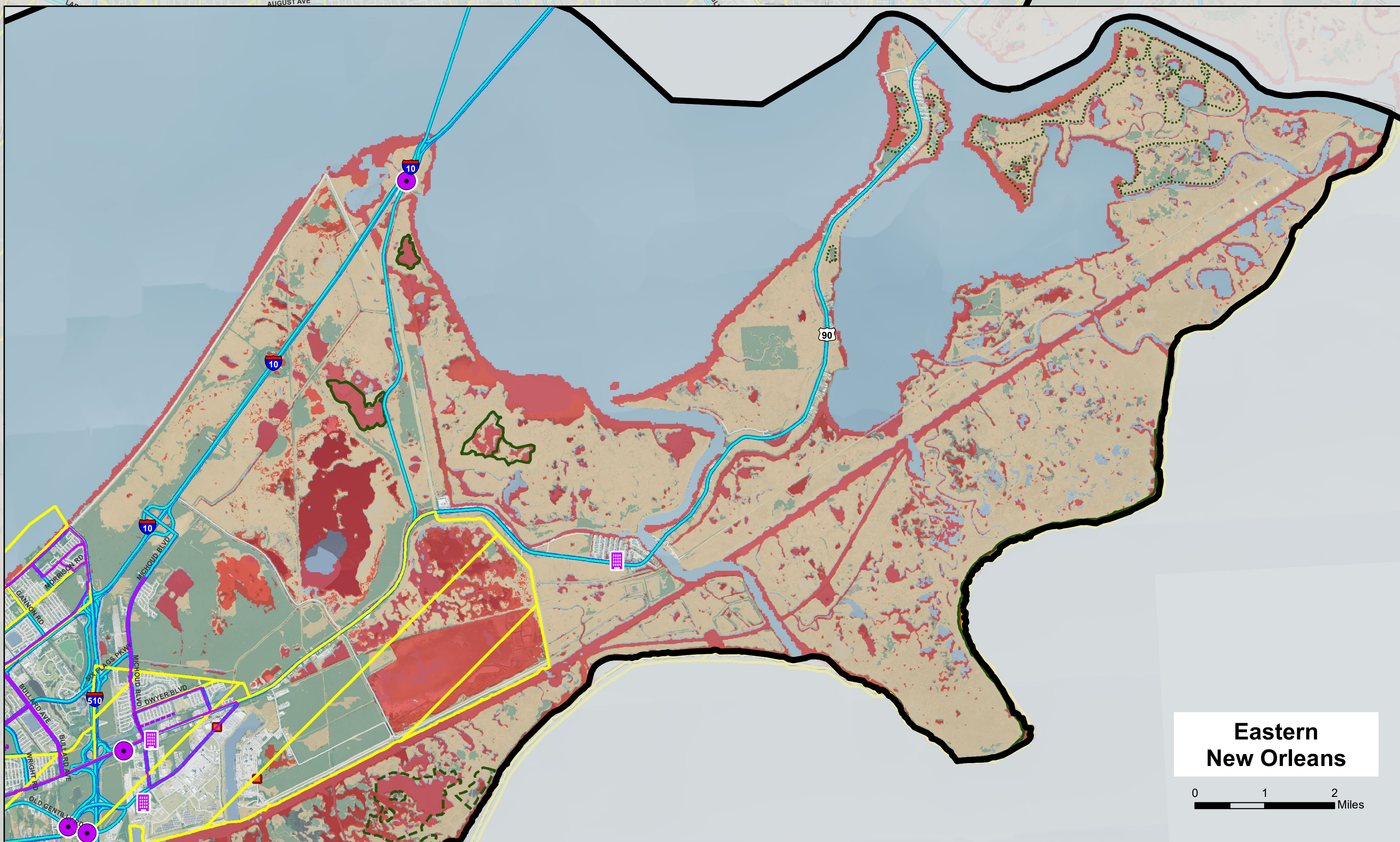
# Orleans Parish

Jefferson Parish

St. Bernard Parish

Plaquemines Parish

Jefferson Parish



Eastern  
New Orleans

0 1 2 Miles

## MAP LEGEND:

### POTENTIAL STATE PCAP PROJECTS

- OFFSHORE WIND - GLOW PROPELLER CONSORTIUM MEMBER (LOTF 2023)
- ELECTRIC SHORE POWER SUPPLIES AT PORT DOCKS (LDOOT 2019)
- TRANSIT INVESTMENT / VMT REDUCTION (USDOT 2019)
- ALTERNATIVE FUEL / IDLE REDUCTION AT TRUCK PARKING LOTS (USDOT 2019)
- FLEET TRANSITION / RETROFIT ENVIRONMENTS FOR GOVERNMENT OFFICES (DUSA 2022)
- COMMUNITY SOLAR HUBS AT PUBLIC SCHOOLS (RPC 2019)
- ALTERNATIVE MODES OF TRANSPORTATION BY EXISTING BICYCLE FACILITY (RPC 2023)
- FLEET TRANSITION / TRANSIT - BUS ROUTE (RTA 2022)
- FLEET TRANSITION / TRANSIT - FERRY ROUTE (RTA 2022)
- FLEET TRANSITION / TRANSIT - STREETCAR ROUTE (RTA 2022)
- REGIONAL TRANSIT - PASSENGER RAIL (RPC 2021)
- DISADVANTAGED TRACT (EPA CJEST 2023)

### GHG CONTRIBUTION LAYERS

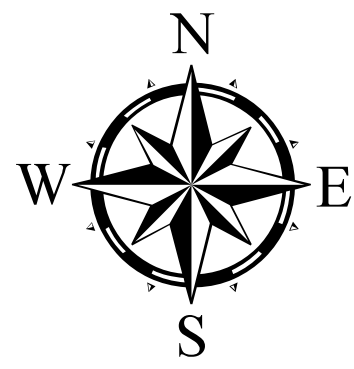
- CH4 EMISSION LANDFILLS (EPA LDOOT 2019)
- TYPE 1 - INDUSTRIAL
- TYPE 2 - NON INDUSTRIAL
- TYPE 3 - CONSTRUCTION & DEMOLITION
- GHG EMITTERS (EPA FLIGHT 2019)
- 1,876 - 931,225 METRIC TONS CO2e
- 931,226 - 1,880,575 METRIC TONS CO2e
- 1,880,576 - 2,789,924 METRIC TONS CO2e
- 2,789,925 - 3,719,274 METRIC TONS CO2e
- 3,719,275 - 4,848,623 METRIC TONS CO2e
- 1932-2015 LAND LOSS (USGS 2016)

### GHG REDUCTION LAYERS

- COMPLETED MARSH PLANTING (CPRA 2014)
- CONSTRUCTED MARSH RESTORATION (CPRA 2023)
- DESIGNED MARSH RESTORATION (CPRA 2023)
- PROPOSED MARSH RESTORATION (CPRA 2023)
- CANOPY (NOAA 2019)
- MARSH VEGETATION (CPRA 2021)
- TIP & MTP GHG-REDUCTION PROJECTS (RPC 2023)

### BASE LAYERS

- LOCAL ROADS (LDOOT 2023)
- FEDERAL AID / FUNCTIONAL CLASS SYSTEM (LDOOT 2023)
- CENSUS DESIGNATED PLACE (CENSUS 2022)
- INCORPORATED BOUNDARY (CENSUS 2022)
- PARISH BOUNDARY (LDOOT 2019)
- HYDROGRAPHY (CENSUS 2022)
- PARISH IMAGERY (USDA NAIP 2021)
- RED: BAND 1
- GREEN: BAND 2
- BLUE: BAND 3



## GHG Data Layers for Pollution Reduction Project Proposals Orleans Parish

0 0.5 1 1.5 2 Miles