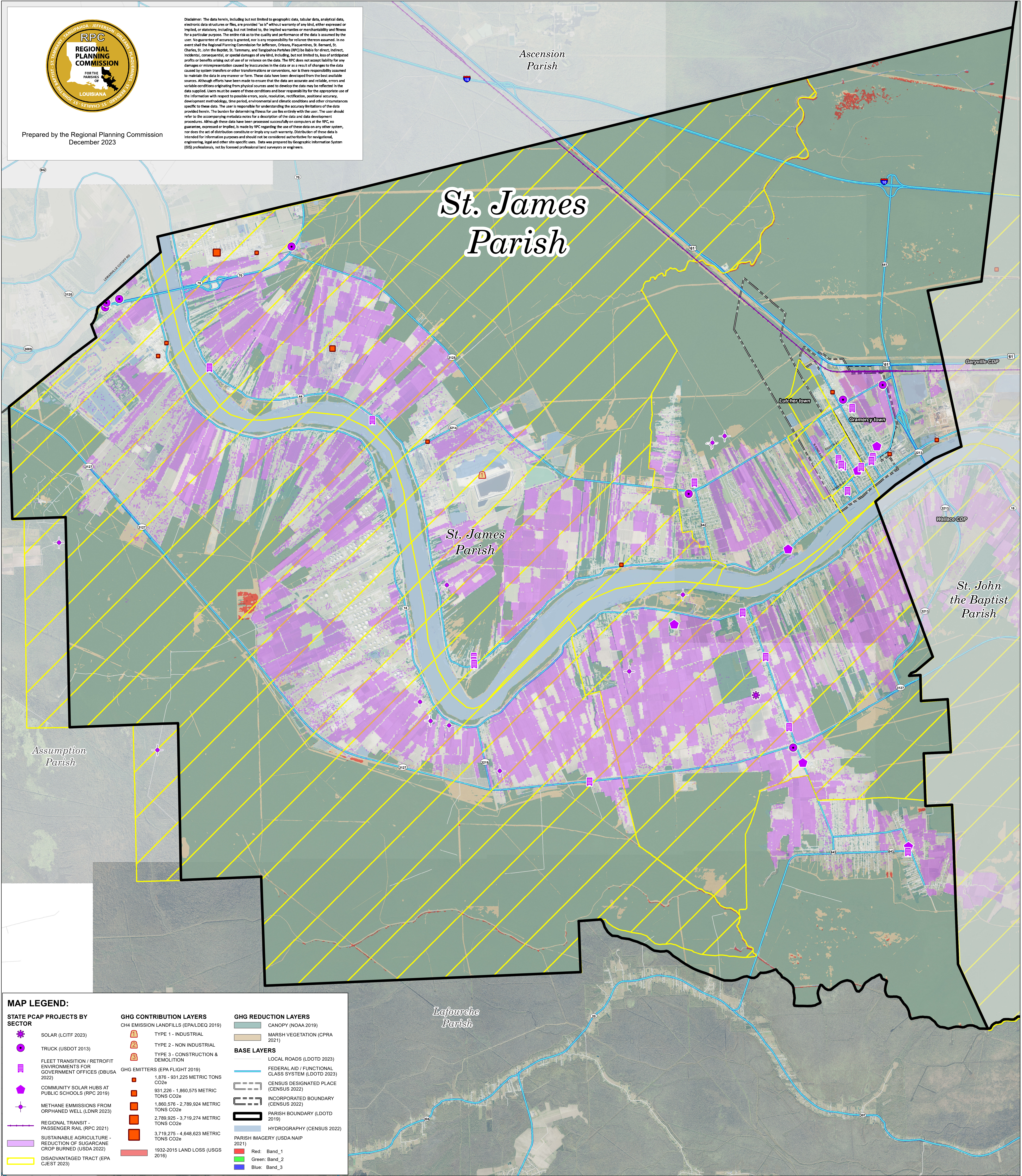




Prepared by the Regional Planning Commission
December 2023

Disclaimer: The data herein, including but not limited to geographic data, tabular data, analytical data, electronic data structures or files, are provided "as is" without warranty of any kind, either expressed or implied, or statutory, including, but not limited to, the implied warranties or merchantability and fitness for a particular purpose. The entire risk as to the quality and performance of the data is assumed by the user. No guarantee of accuracy is granted, nor is any responsibility for reliance thereon assumed. In no event shall the Regional Planning Commission for Jefferson, Orleans, Plaquemines, St. Bernard, St. Charles, St. John the Baptist, St. Landry, St. Martin, and Tangipahoa Parishes (RPC) be liable for direct, indirect, incidental, consequential, or special damages of any kind, including, but not limited to, loss of anticipated profits or benefits arising out of use of or reliance on the data. The RPC does not accept liability for any damages or misrepresentation caused by inaccuracies in the data or as a result of changes to the data caused by system transfers or other transformations or conversions, nor is there responsibility assumed to maintain the data in any manner or form. These data have been developed from the best available sources. Although efforts have been made to ensure that the data are accurate and reliable, errors and variable conditions originating from physical sources used to develop the data may be reflected in the data supplied. Users must be aware of these conditions and bear responsibility for the appropriate use of the information with respect to possible errors, scale, resolution, rectification, positional accuracy, development methodology, time period, environmental and climatic conditions and other circumstances specific to these data. The user is responsible for understanding the accuracy limitations of the data provided herein. The burden for determining fitness for use lies entirely with the user. The user should refer to the accompanying metadata notes for a description of the data and data development procedures. Although these data have been processed successfully on computers at the RPC, no guarantee, expressed or implied, is made by RPC regarding the use of these data on any other system, nor does the act of distribution constitute or imply any such warranty. Distribution of these data is intended for information purposes and should not be considered authoritative for navigational, engineering, legal and other site-specific uses. Data was prepared by Geographic Information System (GIS) professionals, not by licensed professional land surveyors or engineers.



MAP LEGEND:

STATE PCAP PROJECTS BY SECTOR

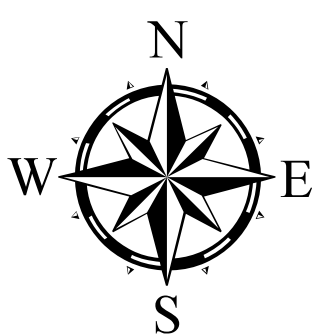
- SOLAR (LCITF 2023)
- TRUCK (USDOT 2013)
- FLEET TRANSITION / RETROFIT ENVIRONMENTS FOR GOVERNMENT OFFICES (DBUSA 2022)
- COMMUNITY SOLAR HUBS AT PUBLIC SCHOOLS (RPC 2019)
- METHANE EMISSIONS FROM ORPHANED WELL (LDNR 2023)
- REGIONAL TRANSIT - PASSENGER RAIL (RPC 2021)
- SUSTAINABLE AGRICULTURE - REDUCTION OF SUGARCANE CROP BURNED (USDA 2022)
- DISADVANTAGED TRACT (EPA CJEST 2023)

GHG CONTRIBUTION LAYERS

- CH4 EMISSION LANDFILLS (EPA/LDEQ 2019)
- TYPE 1 - INDUSTRIAL
- TYPE 2 - NON INDUSTRIAL
- TYPE 3 - CONSTRUCTION & DEMOLITION
- GHG EMITTERS (EPA FLIGHT 2019)
- 1,876 - 931,225 METRIC TONS CO2e
- 931,226 - 1,860,575 METRIC TONS CO2e
- 1,860,576 - 2,789,924 METRIC TONS CO2e
- 2,789,925 - 3,719,274 METRIC TONS CO2e
- 3,719,275 - 4,648,623 METRIC TONS CO2e
- 1932-2015 LAND LOSS (USGS 2016)

GHG REDUCTION LAYERS

- CANOPY (NOAA 2019)
- MARSH VEGETATION (CPRA 2021)
- BASE LAYERS
- LOCAL ROADS (LDOTD 2023)
- FEDERAL AID / FUNCTIONAL CLASS SYSTEM (LDOTD 2023)
- CENSUS DESIGNATED PLACE (CENSUS 2022)
- INCORPORATED BOUNDARY (CENSUS 2022)
- PARISH BOUNDARY (LDOTD 2019)
- HYDROGRAPHY (CENSUS 2022)
- PARISH IMAGERY (USDA NAIP 2021)
- Red: Band_1
- Green: Band_2
- Blue: Band_3



GHG Data Layers for Pollution Reduction Project Proposals

St. James Parish

