

SHARE:

[Join Our Email List](#)

REGIONAL PLANNING COMMISSION

Connecting People + Places in Southeast Louisiana

Jefferson, Orleans, Plaquemines, St. Bernard, St. Charles, St. John, St. Tammany and Tangipahoa Parishes



The New Orleans Regional Planning Commission is pleased to present quarterly news, events, and project updates to a region-wide audience.

In This Edition

- Letter From The Director
- Public Health in RPCs Safe Streets For All Action Plan
- RPC Teams Up With St. Bernard Parish and the Port of New Orleans For Transportation Study
- Southeast Louisiana Clean Fuel Partnership Participates in Tulane EV Workshop
- RPC Documents for Review: Public Participation Plan and Annual Report
- RPC Staff Member Highlight - Nicolette Jones
- The Regional Planning Commission Topographic Mapping Updates

Letter From The Director



It's Carnival Time!

Mardi Gras season, as a cultural event, dates to the very earliest days of the city. It is a very long established and treasured part of life here in southeast Louisiana. But while it is venerable and cherished, it is also dynamic and ever-changing. Every year is a new year that presents its own challenges and opportunities that must be addressed; the end product of which is a unique blend of tradition and modernity that continues to endure and thrive.

But behind the scenes, Mardi Gras is a complex social and logistical enterprise. It requires year-round coordination with the krewes that put on the individual parades, public safety and first responders, business

and civic groups, and cultural bearers that contribute to making the season a safe and enjoyable one for everyone.

I mention this as an example of the power of *collaborative effort*. Similarly- and building on the strengths and inputs of many diverse participants- RPC works to ensure that our region grows and prospers. Our efforts in transportation, economic development and environmental initiatives are all undertaken with the ultimate goal of sustainable and equitable growth, and enhanced quality of life for our residents.

To that end, each year presents its challenges and opportunities. We continue to work with our stakeholders, member parishes, and the public at large to meet the challenges and opportunities that will position our region for success in the present and the future.

In pursuing these efforts, I am thankful for the professionalism and commitment of our stakeholders and local parish and municipal partners. Their expertise has been invaluable in providing a more nuanced understanding of problems and challenges we face as a region. As always, we look forward to working with our Board members, in appreciation of their leadership, guidance, and service; our partner agencies at the local, state, and federal levels, and the residents of our region who makes us unique- like Mardi Gras - in America.

With Gratitude-

Jeff Roesel

Public Health in RPC's Safe Streets and Roads for All Action Plan



Traditional transportation planning typically relies on inputs sets such as crash data, level of service (LOS), and measures of congestion. However, over the past decade there has been a shift to view traffic safety as a public health issue, and to integrate public health methodologies into transportation planning. The RPC's

Safe Streets and Roads for All Action Plan incorporates public health methodologies into the traditional analysis to help inform countermeasure recommendations. Our hope is to create a plan that is both comprehensive and innovative in its traffic safety recommendations to help us achieve our goal of zero fatalities.

On November 1st, the Regional Planning Commission kicked off the Safe Streets and Roads for all Safety Action Plan grant for the Parishes of the St. John the Baptist, St. Tammany, and Tangipahoa Parish. Over the next ten months crash, infrastructure, land use, and demographic data will be analyzed and coupled with extensive public outreach and public health informed methodologies to develop a safety action plan. As the plan progresses, please be on the lookout for the forthcoming Safe Streets and Roads for All website where residents of St. John the Baptist, St. Tammany, and Tangipahoa Parishes are encouraged to provide their insights and post identified problems areas on an interactive map of the region, take a survey, and learn about all of our upcoming meetings. Getting to zero fatalities takes action from all of us, and we look forward to working together to help us realize that goal.

For more information on the Safe Streets and Roads for All project, please contact Nelson Hollings at nhollings@norpc.org

RPC Teams Up With St. Bernard Parish and Port of New Orleans for Transportation Study



The New Orleans Regional Planning Commission, Port of New Orleans, and St. Bernard Parish have teamed up to study how potential future jobs and industry across the Parish may affect roads, bridges and other transportation options as the area grows and changes.

This "Stage 0" study will look at how people and goods currently get around - whether by car, bus, bike, train, walking, and other ways to estimate future needs and develop options to improve transportation safety.

The Study's outreach and engagement process has just begun and will wrap up in July 2024. Keep an eye out for community workshops this Spring! **The study area covers all of St. Bernard Parish and we want to hear from everyone.** This is your chance to share what transportation

is like for you now and what you'd like to see in the future. Your feedback will support policies and project alternatives to make getting around safer and more efficient. [Sign up for email updates to stay in the loop!](#)

[Project Website](#)

Southeast Louisiana Clean Fuel Partnership Participates Tulane EV Workshop



The Southeast Louisiana Clean Fuel Partnership participated in a tour and workshop at Tulane University's Uptown Campus on January 11 to discuss the University's new Electric Shuttles and EV Infrastructure. The coalition presented on the grant with partners from the project including Tulane University, Entergy, and Synergy Engineers. Tulane University purchased electric Ford E-transits with portions of funding from a grant from the Department of Energy's Vehicle Technology's Office. The SLCFP is proud to be a partner on this project and will be continuing to help with outreach and some of

the data analysis to see how the vehicles perform in the New Orleans region. With this data, the SLCFP hopes to create a model for other fleets in the region to assist in more adoption of EV Shuttles and adding EVs to local fleets. Tulane is using these electric shuttles to transfer students to its various campus locations and other off-campus destinations throughout the region. The

SLCFP continues to track additional funding opportunities to fund alternative fuel vehicle projects and their corresponding infrastructure throughout the region, including the DOE's VTO grant. For additional information on electric vehicles in the region and Alternative Fuel vehicles, please contact Aspen Nero at anero@norpc.org and visit the coalition's website: <https://cleanfuelpartnership.weebly.com/>

RPC Documents Up For Review



PUBLIC PARTICIPATION PLAN 2024

New Orleans Regional Planning Commission for Jefferson, Orleans, Plaquemines, St. Bernard, St. Charles, St. John the Baptist, St. Tammany, and Tangipahoa Parishes.



1

Public Participation Plan 2024

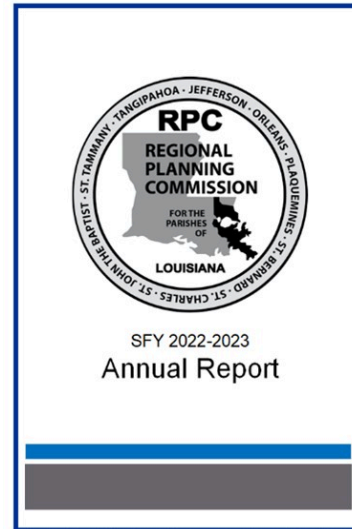
New Orleans Regional Planning Commission

Per RPC's 2023 Certification process with the Federal Highway Administration and Federal Transit Administration updates have been made to the agencies Public Participation Plan. The updated plan details the agencies participation goals, strategies and methods in regard to planning and programs.

Public comment period is open until March 9th, 2024.

The document can be found on the RPC website using the button below:

[RPC Public Participation Plan](#)



The Annual Report is a new document that describes several transportation trends we tracked regionwide in 2023. It also summarizes some of the work we did last year and many things we're looking forward to in 2024. The draft is available for review using the button below:

[Annual Report](#)

RPC Staff Member Highlight - Nicolette Jones

Nicolette is a native of Fort Wayne, Indiana and has been a resident of New Orleans for the last 23 years. The Regional Planning Commission (RPC) welcomed Nicolette in October as a Senior Transportation Planner. Nicolette has 11 years of planning experience specifically as a land use planner for the City of New Orleans. She helped assist in the management of the Regional Watershed Capacity Building Program at the Louisiana Office of Community Development, and later worked for the Desire Line company as a senior planner and grants administrator. She attributes her passion for planning in part to her grandfather, a professor of civil engineering and the Director of Housing in Fort Wayne, Indiana. As a youngster Nicolette would copy her grandfather's blueprints as she sat at his drafting table.

Nicolette is a strong advocate for safe, active transportation which was inspired by her time after college teaching English in Strasbourg, France where she only relied on the tram and biking systems to navigate the city. For Nicolette, biking in Strasbourg was reliable, environmentally friendly and safe, even in the snow! Her land use development background is a vital part of the transportation planning process, and she is an asset to the agency. At RPC, she is also assisting



with the development of the regional climate action plan funded through EPA's Climate Pollution Reduction Grant Program.

Nicolette obtained her Bachelor's degree in Political Economics with a minor in Spanish from Tulane University and Master of Urban and Regional Planning from the University of New Orleans.

Nicolette moved to New Orleans to pursue her studies at Tulane University and enjoys a good weekend brunch, stroller rides in her neighborhood and in City Park, and playing at the Louisiana Children's Museum with her husband and two boys. She has a talent for making baklava, a nod to her Albanian heritage.

If you would like to contact Nicolette, please reach out at: njones@norpc.org

December 2023

THE REGIONAL PLANNING COMMISSION TOPOGRAPHIC MAPPING DATA UPDATES

New Imagery Data for Mapping: Regional Update on Geospatial Products in
Coordination with LADOTD

December 2023 Update:

- High resolution imagery procured for the four urban areas within RPC member parish boundaries. RPC in coordination with U.S. Department of Agriculture (USDA) National Agriculture Imagery Program (NAIP).
- RPC Urban areas captured in 2023 at (15cm) ~6-inch pixel resolution (4-band).
- Parish areas outside of the Urban Area will be available at (30 cm)~1-foot pixel resolution (4-band) soon.
- High density LiDAR (QL1) - currently in large data sets—RPC is downloading and organizing by parish.

La. R.S. 48:36 Topographic Mapping

DOTD shall develop and maintain a statewide digital geospatial database

DOTD shall act as authority for geographic names

DOTD shall set standards for the mapping of topographic features

DOTD shall plan and manage data collection for incorporation into a statewide database

SEND an EXTERNAL DRIVE to RPC for a copy of orthophotos.

Jefferson, Orleans Plaquemines, St. Bernard, St. Charles, and St. John the Baptist Parishes Urban Area (486 gb)

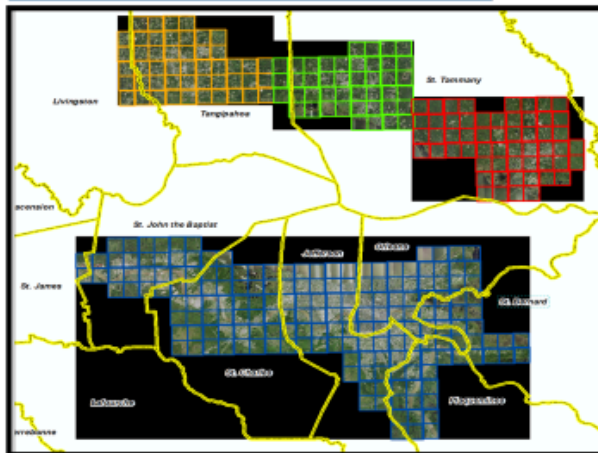
RPC will copy any area or sub area at your request.

Tangipahoa Parish:

- Hammond/Ponchatoula Urban Area (144 gb)

St. Tammany Parish:

- Covington/Mandeville Urban Area (120 gb)
- Slidell Urban Area (151 gb)



New Orleans Regional Planning Commission | 10 Veterans Boulevard, New Orleans, LA 70124

[Unsubscribe mgivhan@norpc.org](mailto:mgivhan@norpc.org)

[Constant Contact Data Notice](#)

Sent by mgivhan@norpc.org powered by



Try email marketing for free today!