

S3: OUTREACH & ENGAGEMENT

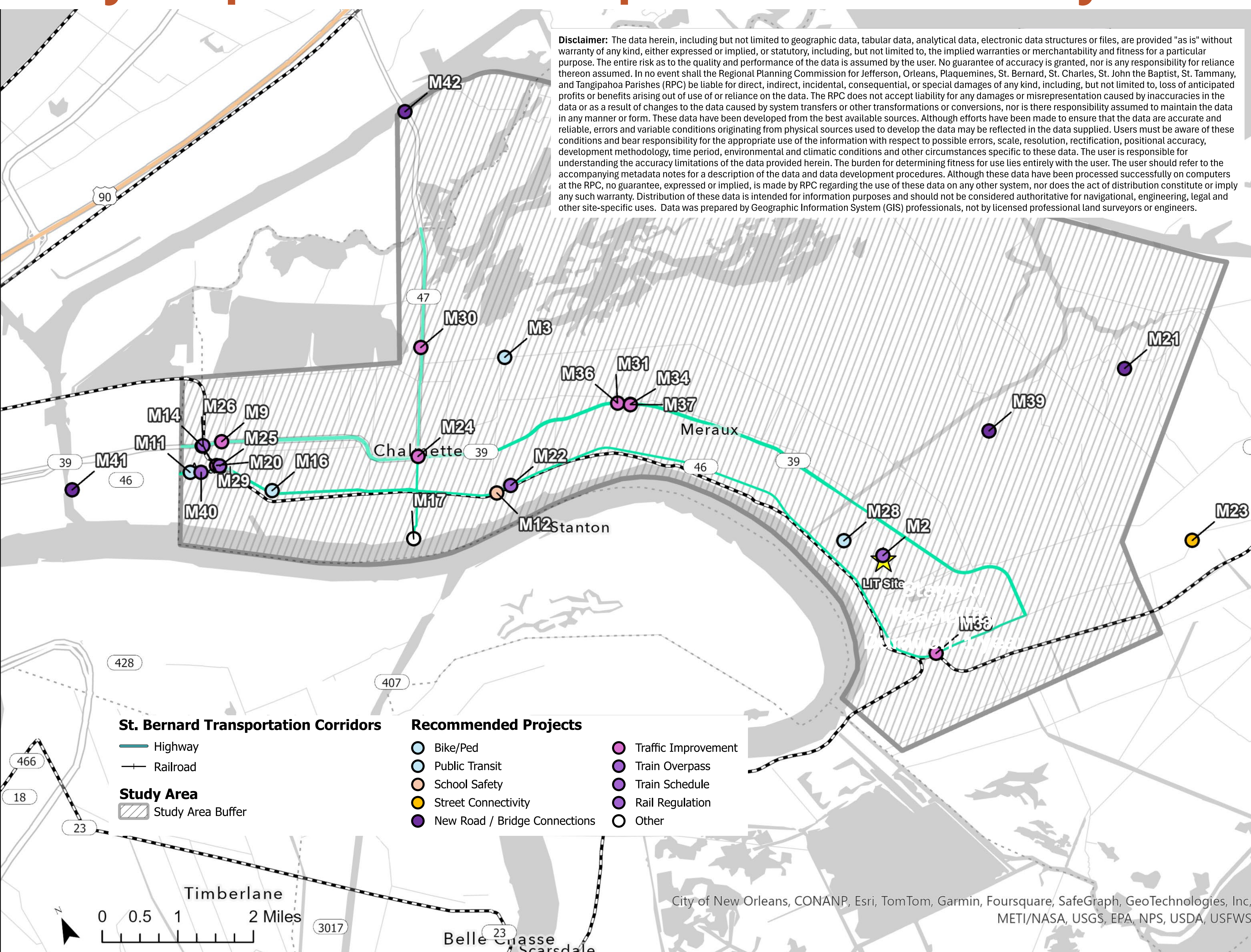
Public Comment Received To-Date

(continued)

Narrowing in on opportunities that may mitigate or reduce the likelihood of community concerns, the Project Team identified project concepts proposed through community feedback for the PLT's consideration and shared this information in late April (after Public Meeting No. 1 and Tabling events), and in Late June to support alternative development.

Thank you to all who have taken the time and energy to provide feedback to this Study!

Location-specific comments suggested by respondents incorporated into Study.



ID	MAPPED RESPONSE THEMES	PROPOSED PROJECTS AND CONCEPTS FROM THE PUBLIC
M16	Bike / Ped	Add wheelchair-accessible sidewalks with braille and other handicap features for crosswalks in and around the future hospital site so that everyone can access healthcare at the hospital.
M28	Bike / Ped	Improve neighborhood sidewalk connectivity, specifically in Violet
M3	Bike / Ped	Improve the existing road along Forty Arpent Canal to prioritize pedestrians, bicyclists, and motorized or manual wheelchairs as an accessible corridor for alternative travel modes; incorporate connections to this parish-wide lateral to increase its utility.
M11	Public Transit	Plan and construct a park-and-ride somewhere near the Bus Hub on St. Claude Ave and Mehle Street, including security cameras, gates, and consideration of a user fee to support local ridership.
M12	School Safety	Designate a school safety zone on LA 46 East from Paris Rd to Liccardi Dr/Jacob Dr in Chalmette, including crosswalks, lower speeds, signage around blind curves, improved striping, and lighting to support the safety of school-aged children.
M31	School Safety	Designate a school safety zone on LA 39 (E Judge Perez Drive) in Meraux.
M23	Street Connectivity	Reconnect and upgrade Bayou Road (Highway 300) in Toca, St Bernard, allowing for safe EMS access, effective bus routes, and local use.
M21	New Road / Bridge Connections	Build a multi-lane contra-flow bridge (tollway) that supports increased traffic in and out of the LIT.
M39	New Road / Bridge Connections	Build a dedicated road north of the Port to 1-10 that will support increased traffic in and out of the LIT.
M41	New Road / Bridge Connections	Investigate the development of a new East/West bridge connection to the Parish beyond the St. Claude and Claiborne bridges.
M42	New Road / Bridge Connections	Investigate the development of a new bridge connection to the Parish beyond the North/South Parish Road/Green Bridge.
M21	New Road / Bridge Connections	Create a dedicated access road directly from the LIT using a maritime transportation channel/canal for future container traffic.
M20	Traffic Improvement	Improve existing Judge Perez and St. Bernard Highway road capacity, including the effects of future heavy truck traffic, flooding, and subsidence.
M24	Traffic Improvement	Adjust light timing at Parish Road and E. Judge Perez Drive (hold times reportedly exceed 8 minutes).
M30	Traffic Improvement	Adjust light sensors at Parish Road near W. Agriculture Street.
M34	Traffic Improvement	Review and update signage related to the traffic light at Hannan Blvd and Judge Perez (both can turn left).
M36	Traffic Improvement	Add a red-light E Judge Perez Dr and Paul Dr, re: school safety and traffic.
M37	Traffic Improvement	Add a red light at the intersection of Archbishop Hannan Blvd and E. St. Bernard Hwy, re: traffic.
M38	Traffic Improvement	Add shoulders to St. Bernard Hwy.
M9	Traffic Improvement	Adjust light sensors at Judge Perez and Center Street.
M14, M26, M29	Train Overpass	Add a train overpass at the intersection of the Florida Walk Canal and West Judge Perez Street.
M20, M25	Train Overpass	Add a train overpass at the intersection of Center Street and St. Bernard Hwy.
M40	Train Overpass	Add a train overpass over the St. Claude Avenue neutral ground at or near the intersection of St. Claude Avenue and Aycock Street.
M2	Train Schedule	Amend night train schedules to reduce frequency and impacts on neighborhood quality of life
M22	Rail Regulation	Require railroad companies to use infrared imaging technology to check chemical rail cars for leaks and to detect overheating to prevent derailments before entering the Parish.
M17	Other	Relocate the Chalmette Ferry to improve access and safety, and consider alternatives to support better Mississippi River connections.

Learn more about feedback received today from the “Outreach Update To Date” Summary on the Project Website here: <http://tinyurl.com/sb-study> or scan the QR code (right).



REGIONAL PLANNING COMMISSION (RPC) ROADWAY NETWORK & RESILIENCE STAGE “0” FEASIBILITY STUDY

