

New Orleans Regional Planning Commission Data Disclaimer:
The data herein, including but not limited to geographic data, tabular data, analytical data, electronic data structures or files, are provided "as is" without warranty of any kind, either expressed or implied, or statutory, including, but not limited to, the implied warranties or merchantability and fitness for a particular purpose. The entire risk as to the quality and performance of the data is assumed by the user. No guarantee of accuracy is granted, nor is any responsibility for reliance thereon assumed. In no event shall the Regional Planning Commission for Jefferson, Orleans, Plaquemines, St. Bernard, St. Charles, St. John the Baptist, St. Tammany, and Tangipahoa Parishes (RPC) be liable for direct, indirect, incidental, consequential, or special damages of any kind, including, but not limited to, loss of anticipated profits or benefits arising out of use of or reliance on the data. The RPC does not accept liability for any damages or misrepresentation caused by inaccuracies in the data or as a result of changes to the data caused by system transfers or other transformations or conversions, nor is there responsibility assumed to maintain the data in any manner or form. These data have been developed from the best available sources. Although efforts have been made to ensure that the data are accurate and reliable, errors and variable conditions originating from physical sources used to develop the data may be reflected in the data supplied. Users must be aware of these conditions and bear responsibility for the appropriate use of the information with respect to possible errors, scale, resolution, rectification, positional accuracy, development methodology, time period, environmental and climatic conditions and other circumstances specific to these data. The user is responsible for understanding the accuracy limitations of the data provided herein. The burden for determining fitness for use lies entirely with the user. The user should refer to the accompanying metadata notes for a description of the data and data development procedures. Although these data have been processed successfully on computers at the RPC, no guarantee, expressed or implied, is made by RPC regarding the use of these data on any other system, nor does the act of distribution constitute or imply any such warranty. Distribution of these data is intended for information purposes and should not be considered authoritative for navigational, engineering, legal and other site-specific uses. Data was prepared by Geographic Information System (GIS) professionals, not by licensed professional land surveyors or engineers.

LEGEND

- STATE LINE
- PARKS
- PARISH & COUNTY BOUNDARY
- MAJOR WATERBODIES
- SCHOOL
- LIBRARY
- HOSPITAL
- INTERSTATE AND HIGHWAYS
- PRIMARY ROADS
- LOCAL ROADS
- RAILROADS
- TAMMANY TRACE
- PROPOSED INTERSECTION IMPROVEMENTS

ON-STREET ALL FACILITY TYPE, COMPLETED

- BIKE LANE
- SEPARATED BIKE LANE
- PAVED SHOULDER

ON-STREET ALL FACILITY TYPE, PROPOSED

- BIKE LANE
- SEPARATED BIKE LANE
- BICYCLE BOULEVARD
- PAVED SHOULDER

OFF-STREET ALL FACILITY TYPE, COMPLETED

- SHARED USE PATH
- SIDEWALK
- SIDEPATH

OFF-STREET ALL FACILITY TYPE, PROPOSED

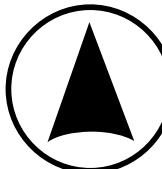
- SHARED USE PATH
- SIDEWALK
- SIDEPATH

Data Sources:
Pedestrian & Bicycle Facilities: The Regional Planning Commission for Jefferson, Orleans, Plaquemines, St. Bernard, St. John the Baptist, St. Tammany and Tangipahoa Parishes (RPC) 2023. BikeTrails Routes.
State Boundaries: Esri; U.S. Census Bureau. (2024). United States Boundaries 2023 [Feature layer]. Esri. <https://services.arcgis.com/your-service-url>
Cities: U.S. Geological Survey. (2010). National populated places 2000 [Vector digital data]. U.S. Geological Survey. <https://nationalatlas.gov/atlasftp.html>
Parks: Esri. (2024). USA Parks [Feature layer]. Esri. https://services.arcgis.com/P3ePLMYs2RVChkxj/arcgis/rest/services/USA_Parks/FeatureServer
Transportation Data: NGDA, National Geospatial Data Asset, U.S. Census Bureau, USDOT (2024). Transportation [Feature layer]. Esri. <https://fedmaps.maps.arcgis.com/home/item.html?id=f42ecc08a3634182b678514a35fac3>
Parish & County Boundaries: U.S. Census Bureau. (2019). TIGER/Line shapefile, 2019, Nation U.S., current county and equivalent [Shapefile]. U.S. Census Bureau. <https://catalog.data.gov/dataset/tiger-line-shapefile-2019-nation-u-s-current-county-and-equivalent-national-shapefile>
Waterbodies: U.S. Census Bureau. (n.d.) Louisiana Waterbodies [Feature Layer]. https://gs.wrlf.la.gov/arcgis/rest/services/Basemaps/LA_Water/MapServer



ST TAMMANY PARISH NETWORK - PARISH BOUNDARY

0 1.25 2.5 5 7.5 10 Miles



New Orleans Regional Planning Commission Data Disclaimer:
The data herein, including but not limited to geographic data, tabular data, analytical data, electronic data structures or files, are provided "as is" without warranty of any kind, either expressed or implied, or statutory, including, but not limited to, the implied warranties or merchantability and fitness for a particular purpose. The entire risk as to the quality and performance of the data is assumed by the user. No guarantee of accuracy is granted, nor is any responsibility for reliance thereon assumed. In no event shall the Regional Planning Commission for Jefferson, Orleans, Plaquemines, St. Bernard, St. Charles, St. John the Baptist, St. Tammany, and Tangipahoa Parishes (RPC) be liable for direct, indirect, incidental, consequential, or special damages of any kind, including, but not limited to, loss of anticipated profits or benefits arising out of use of or reliance on the data. The RPC does not accept liability for any damages or misrepresentation caused by inaccuracies in the data or as a result of changes to the data caused by system transfers or other transformations or conversions, nor is there responsibility assumed to maintain the data in any manner or form. These data have been developed from the best available sources. Although efforts have been made to ensure that the data are accurate and reliable, errors and variable conditions originating from physical sources used to develop the data may be reflected in the data supplied. Users must be aware of these conditions and bear responsibility for the appropriate use of the information with respect to possible errors, scale, resolution, rectification, positional accuracy, development methodology, time period, environmental and climatic conditions and other circumstances specific to these data. The user is responsible for understanding the accuracy limitations of the data provided herein. The burden of determining fitness for use lies entirely with the user. The user should refer to the accompanying metadata notes for a description of the data and data development procedures. Although these data have been processed successfully on computers at the RPC, no guarantee, expressed or implied, is made by RPC regarding the use of these data on any other system, nor does the act of distribution constitute or imply any such warranty. Distribution of these data is intended for information purposes and should not be considered authoritative for navigational, engineering, legal and other site-specific uses. Data was prepared by Geographic Information System (GIS) professionals, not by licensed professional land surveyors or engineers.

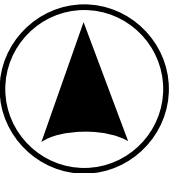
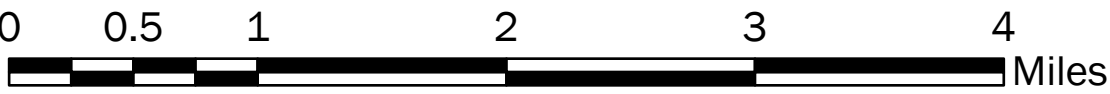
LEGEND

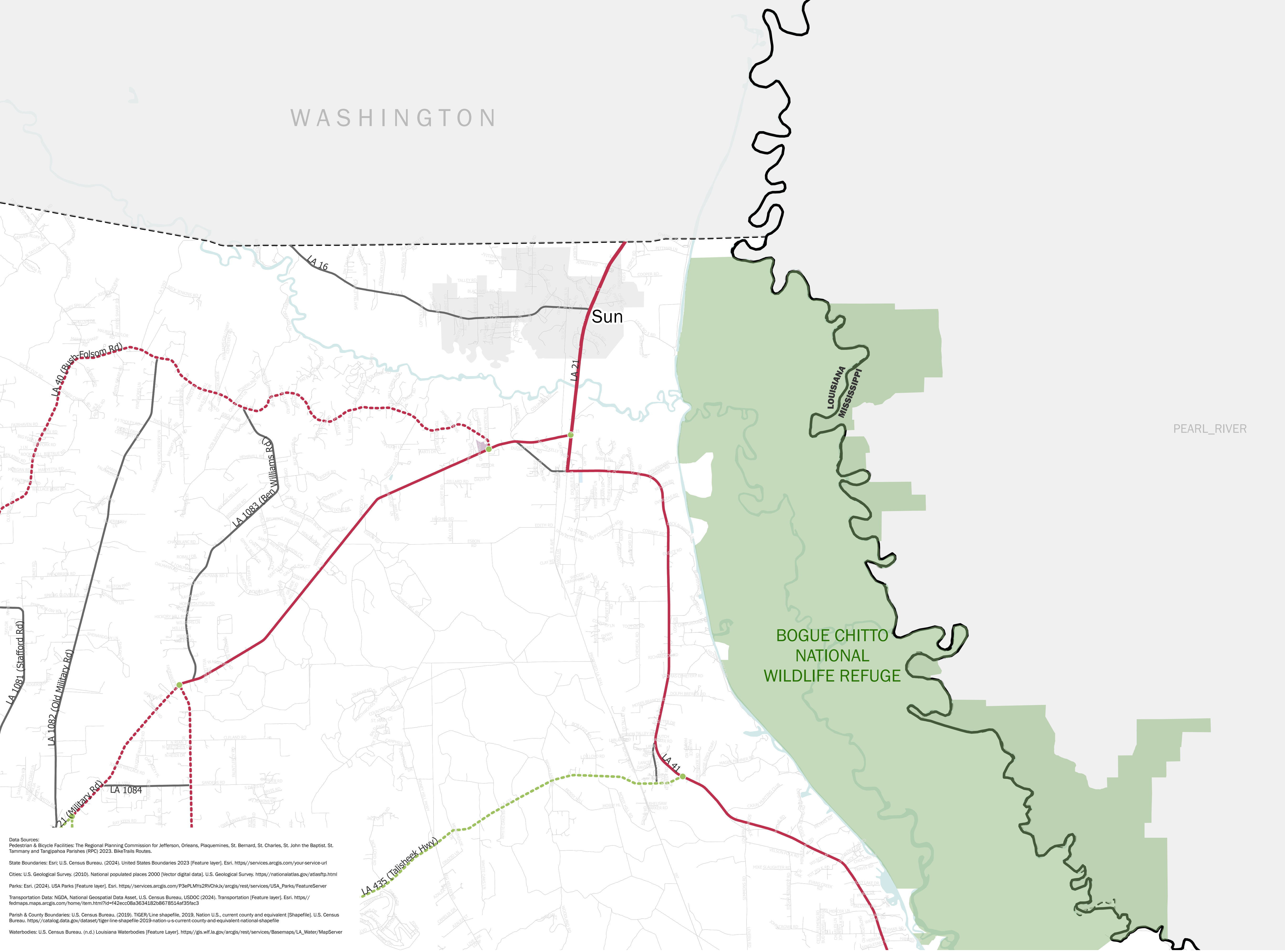
- STATE LINE
- PARKS
- PARISH & COUNTY BOUNDARY
- MAJOR WATERBODIES
- SCHOOL
- LIBRARY
- HOSPITAL
- INTERSTATE AND HIGHWAYS
- PRIMARY ROADS
- LOCAL ROADS
- RAILROADS
- PROPOSED INTERSECTION IMPROVEMENTS
- ON-STREET ALL FACILITY TYPE, COMPLETED
- BIKE LANE
- SEPARATED BIKE LANE
- PAVED SHOULDER
- ON-STREET ALL FACILITY TYPE, PROPOSED
- BIKE LANE
- SEPARATED BIKE LANE
- BICYCLE BOULEVARD
- PAVED SHOULDER
- OFF-STREET ALL FACILITY TYPE, COMPLETED
- SHARED USE PATH
- SIDEWALK
- SIDEPATH
- OFF-STREET ALL FACILITY TYPE, PROPOSED
- SHARED USE PATH
- SIDEWALK
- SIDEPATH

Data Sources:
Pedestrian & Bicycle Facilities: The Regional Planning Commission for Jefferson, Orleans, Plaquemines, St. Bernard, St. John the Baptist, St. Tammany and Tangipahoa Parishes (RPC) 2023. BikeTrails Routes.
State Boundaries: Esri; U.S. Census Bureau. (2024). United States Boundaries 2023 [Feature layer]. Esri. <https://services.arcgis.com/your-service-url>
Cities: U.S. Geological Survey. (2010). National populated places 2000 [Vector digital data]. U.S. Geological Survey. <https://nationalatlas.gov/atlasftp.html>
Parks: Esri. (2024). USA Parks [Feature layer]. Esri. https://services.arcgis.com/P3ePLMYs2RVChkJ/arcgis/rest/services/USA_Parks/FeatureServer
Transportation Data: NGDA, National Geospatial Data Asset, U.S. Census Bureau, USDOC (2024). Transportation [Feature layer]. Esri. <https://fedmaps.maps.arcgis.com/home/item.html?id=442ecc08a3634182b8678514a35fac3>
Parish & County Boundaries: U.S. Census Bureau. (2019). TIGER/Line shapefile, 2019, Nation U.S., current county and equivalent [Shapefile]. U.S. Census Bureau. <https://catalog.data.gov/dataset/tiger-line-shapefile-2019-nation-u-s-current-county-and-equivalent-national-shapefile>
Waterbodies: U.S. Census Bureau. (n.d.) Louisiana Waterbodies [Feature Layer]. https://gs.wrl.la.gov/arcgis/rest/services/Basemaps/LA_Water/MapServer



ST TAMMANY PARISH NETWORK - NORTHWEST





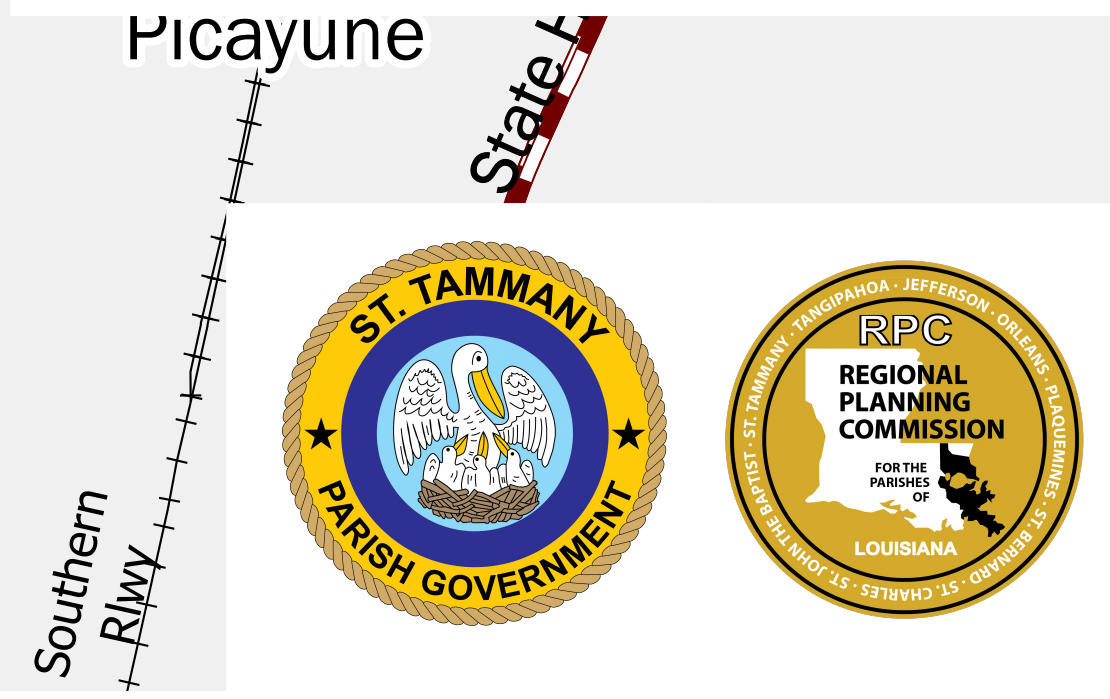
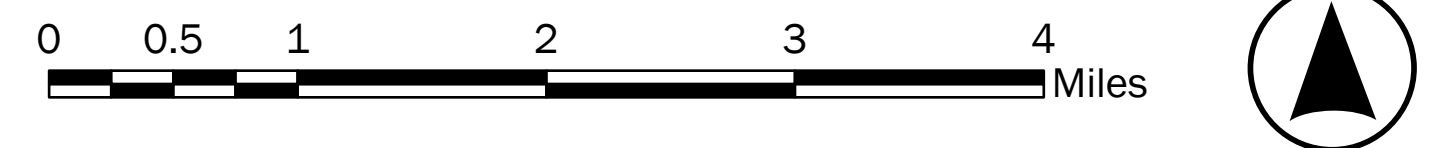
New Orleans Regional Planning Commission Data Disclaimer:
The data herein, including but not limited to geographic data, tabular data, analytical data, electronic data structures or files, are provided "as is", without warranty of any kind, either expressed or implied, or statutory, including, but not limited to, the implied warranties or merchantability and fitness for a particular purpose. The entire risk as to the quality and performance of the data is assumed by the user. No guarantee of accuracy is granted, nor is any responsibility for reliance thereon assumed. In no event shall the Regional Planning Commission for Jefferson, Orleans, Plaquemines, St. Bernard, St. Charles, St. John the Baptist, St. Tammany, and Tangipahoa Parishes (RPC) be liable for direct, indirect, incidental, consequential, or special damages of any kind, including, but not limited to, loss of anticipated profits or benefits arising out of use of or reliance on the data. The RPC does not accept liability for any damages or misrepresentation caused by inaccuracies in the data or as a result of changes to the data caused by system transfers or other transformations or conversions, nor is there responsibility assumed to maintain the data in any manner or form. These data have been developed from the best available sources. Although efforts have been made to ensure that the data are accurate and reliable, errors and variable conditions originating from physical sources used to develop the data may be reflected in the data supplied. Users must be aware of these conditions and bear responsibility for the appropriate use of the information with respect to possible errors, scale, resolution, rectification, positional accuracy, development methodology, time period, environmental and climatic conditions and other circumstances specific to these data. The user is responsible for understanding the accuracy limitations of the data provided herein. The burden for determining fitness for use lies entirely with the user. The user should refer to the accompanying metadata notes for a description of the data and data development procedures. Although these data have been processed successfully on computers at the RPC, no guarantee, expressed or implied, is made by RPC regarding the use of these data on any other system, nor does the act of distribution constitute or imply any such warranty. Distribution of these data is intended for information purposes and should not be considered authoritative for navigational, engineering, legal and other site-specific uses. Data was prepared by Geographic Information System (GIS) professionals, not by licensed professional land surveyors or engineers.

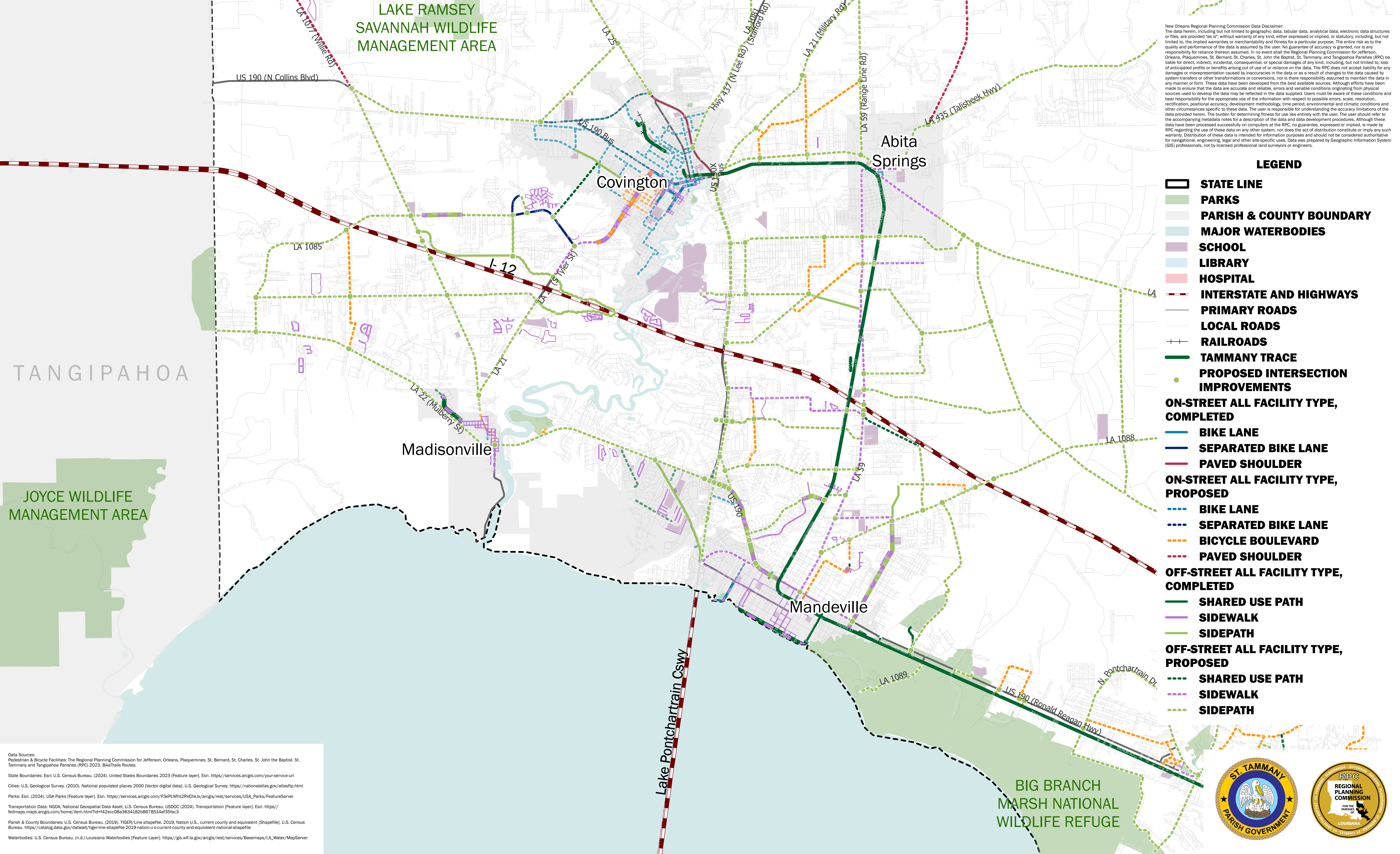
LEGEND

- STATE LINE
- PARKS
- PARISH & COUNTY BOUNDARY
- MAJOR WATERBODIES
- SCHOOL
- LIBRARY
- HOSPITAL
- INTERSTATE AND HIGHWAYS
- PRIMARY ROADS
- LOCAL ROADS
- RAILROADS
- PROPOSED INTERSECTION IMPROVEMENTS
- ON-STREET ALL FACILITY TYPE, COMPLETED
 - BIKE LANE
 - SEPARATED BIKE LANE
 - PAVED SHOULDER
- ON-STREET ALL FACILITY TYPE, PROPOSED
 - BIKE LANE
 - SEPARATED BIKE LANE
 - BICYCLE BOULEVARD
 - PAVED SHOULDER
- OFF-STREET ALL FACILITY TYPE, COMPLETED
 - SHARED USE PATH
 - SIDEWALK
 - SIDEPATH
- OFF-STREET ALL FACILITY TYPE, PROPOSED
 - SHARED USE PATH
 - SIDEWALK
 - SIDEPATH

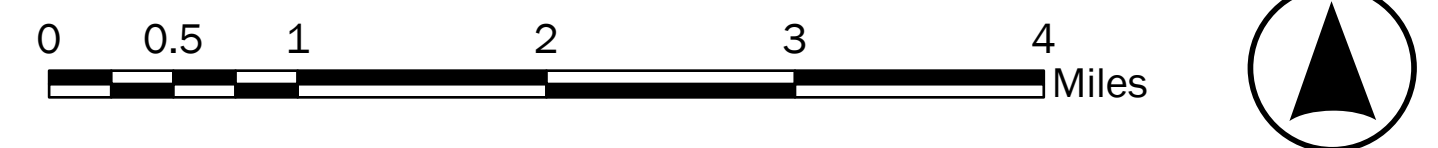
Data Sources:
Pedestrian & Bicycle Facilities: The Regional Planning Commission for Jefferson, Orleans, Plaquemines, St. Bernard, St. Charles, St. John the Baptist, St. Tammany and Tangipahoa Parishes (RPC) 2023. BikeTrails Routes.
State Boundaries: Esri; U.S. Census Bureau. (2024). United States Boundaries 2023 [Feature layer]. Esri. <https://services.arcgis.com/your-service-url>
Cities: U.S. Geological Survey. (2010). National populated places 2000 [Vector digital data]. U.S. Geological Survey. <https://nationalatlas.gov/atlasftp.html>
Parks: Esri. (2024). USA Parks [Feature layer]. Esri. https://services.arcgis.com/P3ePLMYs2RNChkx/arcgis/rest/services/USA_Parks/FeatureServer
Transportation Data: NGDA, National Geospatial Data Asset, U.S. Census Bureau, USDOC (2024). Transportation [Feature layer]. Esri. <https://fedmaps.maps.arcgis.com/home/item.html?id=442ecc08a3634182b678514a35f1ac3>
Parish & County Boundaries: U.S. Census Bureau. (2019). TIGER/Line shapefile. 2019, Nation U.S., current county and equivalent [Shapefile]. U.S. Census Bureau. <https://catalog.data.gov/dataset/tiger-line-shapefile-2019-nation-u-s-current-county-and-equivalent-national-shapefile>
Waterbodies: U.S. Census Bureau. (n.d.) Louisiana Waterbodies [Feature Layer]. https://gs.wrl.la.gov/arcgis/rest/services/Basemaps/LA_Water/MapServer

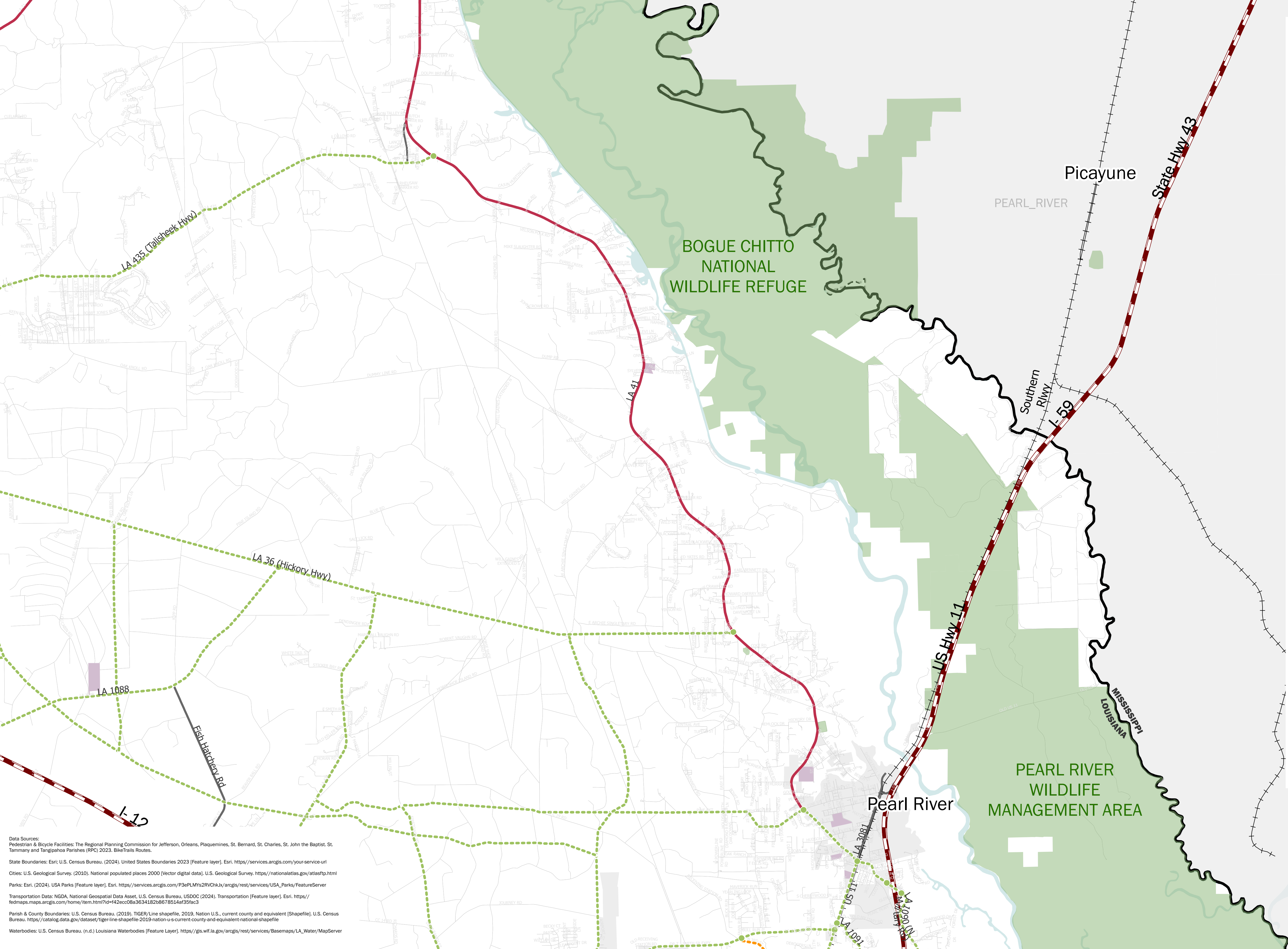
ST TAMMANY PARISH NETWORK - NORTHEAST





New Orleans Regional Planning Commission Data Disclaimer:
The data herein, including but not limited to geographic data, tabular data, analytical data, electronic data structures or files, are provided "as is", without warranty of any kind, either expressed or implied, or statutory, including, but not limited to, the implied warranties or merchantability and fitness for a particular purpose. The entire risk as to the quality and performance of the data is assumed by the user. No guarantee of accuracy is granted, nor is any responsibility for reliance thereon assumed. In no event shall the Regional Planning Commission for Jefferson, Orleans, Plaquemines, St. Bernard, St. Charles, St. John the Baptist, St. Tammany, and Tangipahoa Parishes (RPC) be liable for direct, indirect, incidental, consequential, or special damages of any kind, including, but not limited to, loss of anticipated profits or benefits arising out of use of or reliance on the data. The RPC does not accept liability for any damages or misrepresentation caused by inaccuracies in the data or as a result of changes to the data caused by system transfers or other transformations or conversions, nor is there responsibility assumed to maintain the data in any manner or form. These data have been developed from the best available sources. Although efforts have been made to ensure that the data are accurate and reliable, errors and variable conditions originating from physical sources used to develop the data may be reflected in the data supplied. Users must be aware of these conditions and bear responsibility for the appropriate use of the information with respect to possible errors, scale, resolution, rectification, positional accuracy, development methodology, time period, environmental and climatic conditions and other circumstances specific to these data. The user is responsible for understanding the accuracy limitations of the data provided herein. The burden for determining fitness for use lies entirely with the user. The user should refer to the accompanying metadata notes for a description of the data and data development procedures. Although these data have been processed successfully on computers at the RPC, no guarantee, expressed or implied, is made by RPC regarding the use of these data on any other system, nor does the act of distribution constitute or imply any such warranty. Distribution of these data is intended for information purposes and should not be considered authoritative for navigational, engineering, legal and other site-specific uses. Data was prepared by Geographic Information System (GIS) professionals, not by licensed professional land surveyors or engineers.





New Orleans Regional Planning Commission Data Disclaimer:
The data herein, including but not limited to geographic data, tabular data, analytical data, electronic data structures or files, are provided "as is" without warranty of any kind, either expressed or implied, or statutory, including, but not limited to, the implied warranties or merchantability and fitness for a particular purpose. The entire risk as to the quality and performance of the data is assumed by the user. No guarantee of accuracy is granted, nor is any responsibility for reliance thereon assumed. In no event shall the Regional Planning Commission for Jefferson, Orleans, Plaquemines, St. Bernard, St. Charles, St. John the Baptist, St. Tammany, and Tangipahoa Parishes (RPC) be liable for direct, indirect, incidental, consequential, or special damages of any kind, including, but not limited to, loss of anticipated profits or benefits arising out of use of or reliance on the data. The RPC does not accept liability for any damages or misrepresentation caused by inaccuracies in the data or as a result of changes to the data caused by system transfers or other transformations or conversions, nor is there responsibility assumed to maintain the data in any manner or form. These data have been developed from the best available sources. Although efforts have been made to ensure that the data are accurate and reliable, errors and variable conditions originating from physical sources used to develop the data may be reflected in the data supplied. Users must be aware of these conditions and bear responsibility for the appropriate use of the information with respect to possible errors, scale, resolution, rectification, positional accuracy, development methodology, time period, environmental and climatic conditions and other circumstances specific to these data. The user is responsible for understanding the accuracy limitations of the data provided herein. The burden for determining fitness for use lies entirely with the user. The user should refer to the accompanying metadata notes for a description of the data and data development procedures. Although these data have been processed successfully on computers at the RPC, no guarantee, expressed or implied, is made by RPC regarding the use of these data on any other system, nor does the act of distribution constitute or imply any such warranty. Distribution of these data is intended for information purposes and should not be considered authoritative for navigational, engineering, legal and other site-specific uses. Data was prepared by Geographic Information System (GIS) professionals, not by licensed professional land surveyors or engineers.

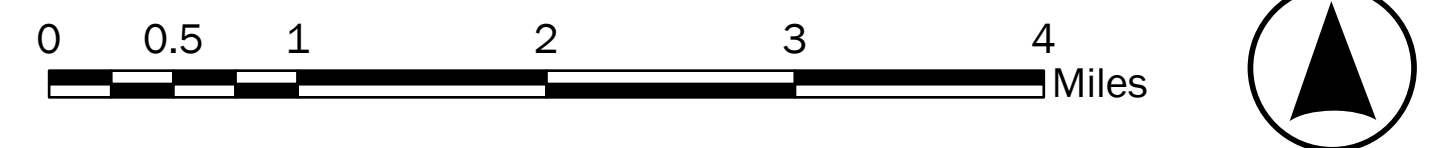
LEGEND

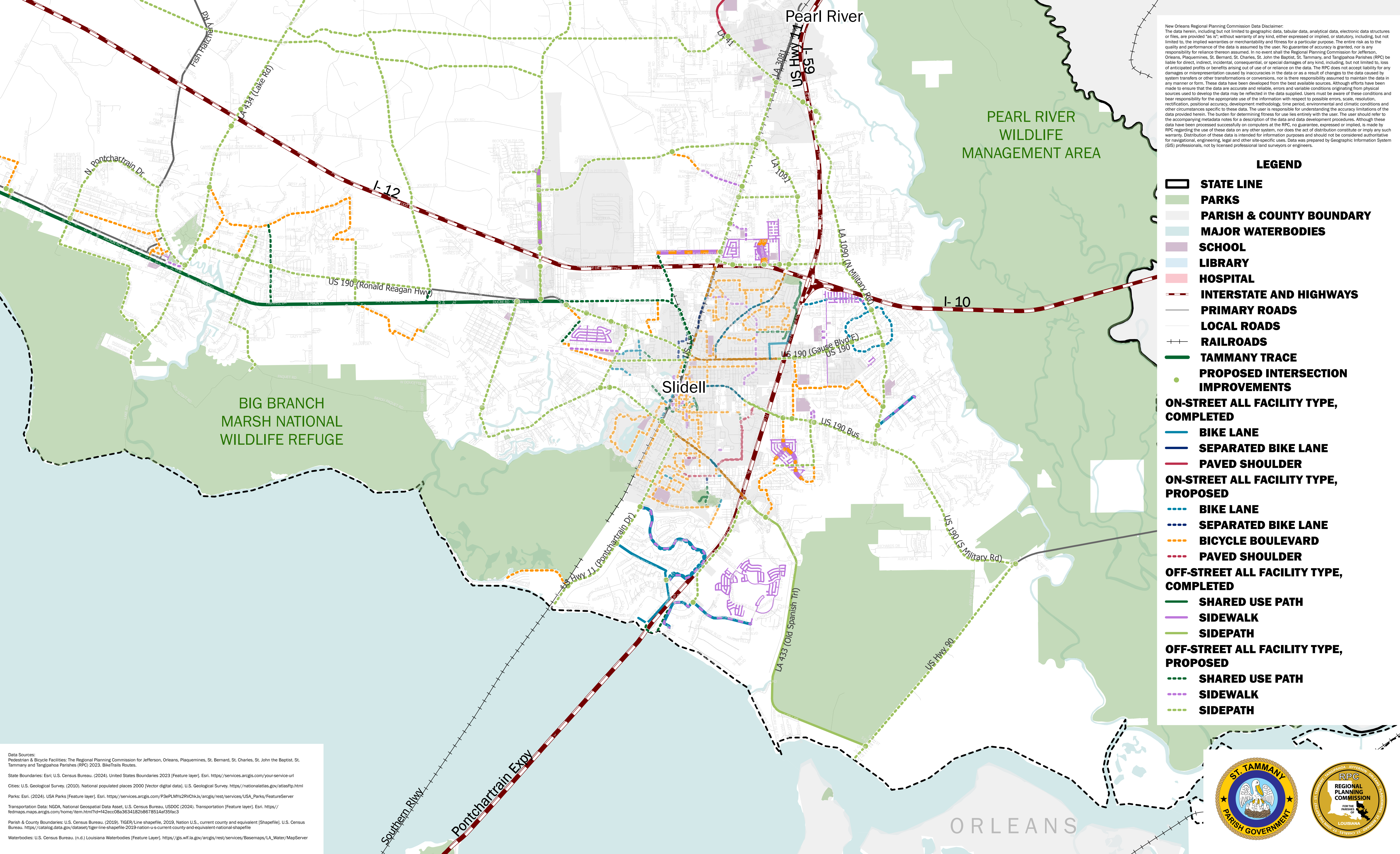
- STATE LINE
- PARKS
- PARISH & COUNTY BOUNDARY
- MAJOR WATERBODIES
- SCHOOL
- LIBRARY
- HOSPITAL
- INTERSTATE AND HIGHWAYS
- PRIMARY ROADS
- LOCAL ROADS
- RAILROADS
- PROPOSED INTERSECTION IMPROVEMENTS
- ON-STREET ALL FACILITY TYPE, COMPLETED
 - BIKE LANE
 - SEPARATED BIKE LANE
 - PAVED SHOULDER
- ON-STREET ALL FACILITY TYPE, PROPOSED
 - BIKE LANE
 - SEPARATED BIKE LANE
 - BICYCLE BOULEVARD
 - PAVED SHOULDER
- OFF-STREET ALL FACILITY TYPE, COMPLETED
 - SHARED USE PATH
 - SIDEWALK
 - SIDEPATH
- OFF-STREET ALL FACILITY TYPE, PROPOSED
 - SHARED USE PATH
 - SIDEWALK
 - SIDEPATH

Data Sources:
Pedestrian & Bicycle Facilities: The Regional Planning Commission for Jefferson, Orleans, Plaquemines, St. Bernard, St. Charles, St. John the Baptist, St. Tammany and Tangipahoa Parishes (RPC) 2023. BikeTrails Routes.
State Boundaries: Esri; U.S. Census Bureau. (2024). United States Boundaries 2023 [Feature layer]. Esri. <https://services.arcgis.com/your-service-url>
Cities: U.S. Geological Survey. (2010). National populated places 2000 [Vector digital data]. U.S. Geological Survey. <https://nationalatlas.gov/atlasftp.html>
Parks: Esri. (2024). USA Parks [Feature layer]. Esri. https://services.arcgis.com/P3ePLMYs2RVChkJ/arcgis/rest/services/USA_Parks/FeatureServer
Transportation Data: NGDA, National Geospatial Data Asset, U.S. Census Bureau, USDOC (2024). Transportation [Feature layer]. Esri. <https://fedmaps.maps.arcgis.com/home/item.html?id=142ecc08a3634182b8678514a935fac3>
Parish & County Boundaries: U.S. Census Bureau. (2019). TIGER/Line shapefile. 2019, Nation U.S., current county and equivalent [Shapefile]. U.S. Census Bureau. <https://catalog.data.gov/dataset/tiger-line-shapefile-2019-nation-u-s-current-county-and-equivalent-national-shapefile>
Waterbodies: U.S. Census Bureau. (n.d.) Louisiana Waterbodies [Feature Layer]. https://gs.wf.la.gov/arcgis/rest/services/Basemaps/LA_Water/MapServer



ST TAMMANY PARISH NETWORK - EAST





New Orleans Regional Planning Commission Data Disclaimer:
The data herein, including but not limited to geographic data, tabular data, analytical data, electronic data structures or files, are provided "as is" without warranty of any kind, either expressed or implied, or statutory, including, but not limited to, the implied warranties or merchantability and fitness for a particular purpose. The entire risk as to the quality and performance of the data is assumed by the user. No guarantee of accuracy is granted, nor is any responsibility for reliance thereon assumed. In no event shall the Regional Planning Commission for Jefferson, Orleans, Plaquemines, St. Bernard, St. Charles, St. John the Baptist, St. Tammany, and Tangipahoa Parishes (RPC) be liable for direct, indirect, incidental, consequential, or special damages of any kind, including, but not limited to, loss of anticipated profits or benefits arising out of use of or reliance on the data. The RPC does not accept liability for any damages or misrepresentation caused by inaccuracies in the data or as a result of changes to the data caused by system transfers or other transformations or conversions, nor is there responsibility assumed to maintain the data in any manner or form. These data have been developed from the best available sources. Although efforts have been made to ensure that the data are accurate and reliable, errors and variable conditions originating from physical sources used to develop the data may be reflected in the data supplied. Users must be aware of these conditions and bear responsibility for the appropriate use of the information with respect to possible errors, scale, resolution, rectification, positional accuracy, development methodology, time period, environmental and climatic conditions and other circumstances specific to these data. The user is responsible for understanding the accuracy limitations of the data provided herein. The burden for determining fitness for use lies entirely with the user. The user should refer to the accompanying metadata notes for a description of the data and data development procedures. Although these data have been processed successfully on computers at the RPC, no guarantee, expressed or implied, is made by RPC regarding the use of these data on any other system, nor does the act of distribution constitute or imply any such warranty. Distribution of these data is intended for information purposes and should not be considered authoritative for navigational, engineering, legal and other site-specific uses. Data was prepared by Geographic Information System (GIS) professionals, not by licensed professional land surveyors or engineers.

- LEGEND**
- STATE LINE**
 - PARKS**
 - PARISH & COUNTY BOUNDARY**
 - MAJOR WATERBODIES**
 - SCHOOL**
 - LIBRARY**
 - HOSPITAL**
 - INTERSTATE AND HIGHWAYS**
 - PRIMARY ROADS**
 - LOCAL ROADS**
 - RAILROADS**
 - TAMMANY TRACE**
 - PROPOSED INTERSECTION IMPROVEMENTS**
 - ON-STREET ALL FACILITY TYPE, COMPLETED**
 - BIKE LANE**
 - SEPARATED BIKE LANE**
 - PAVED SHOULDER**
 - ON-STREET ALL FACILITY TYPE, PROPOSED**
 - BIKE LANE**
 - SEPARATED BIKE LANE**
 - BICYCLE BOULEVARD**
 - PAVED SHOULDER**
 - OFF-STREET ALL FACILITY TYPE, COMPLETED**
 - SHARED USE PATH**
 - SIDEWALK**
 - SIDEPATH**
 - OFF-STREET ALL FACILITY TYPE, PROPOSED**
 - SHARED USE PATH**
 - SIDEWALK**
 - SIDEPATH**

Data Sources:
Pedestrian & Bicycle Facilities: The Regional Planning Commission for Jefferson, Orleans, Plaquemines, St. Bernard, St. John the Baptist, St. Tammany and Tangipahoa Parishes (RPC) 2023. BikeTrails Routes.
State Boundaries: Esri; U.S. Census Bureau. (2024). United States Boundaries 2023 [Feature layer]. Esri. <https://services.arcgis.com/your-service-url>
Cities: U.S. Geological Survey. (2010). National populated places 2000 [Vector digital data]. U.S. Geological Survey. <https://nationalatlas.gov/atlasftp.html>
Parks: Esri. (2024). USA Parks [Feature layer]. Esri. https://services.arcgis.com/P3ePLMYs2RVChkJx/arcgis/rest/services/USA_Parks/FeatureServer
Transportation Data: NGDA, National Geospatial Data Asset, U.S. Census Bureau, USDOC (2024). Transportation [Feature layer]. Esri. <https://fedmaps.maps.arcgis.com/home/item.html?id=442ecc08a3634182b8678514a35fac3>
Parish & County Boundaries: U.S. Census Bureau. (2019). TIGER/Line shapefile, 2019, Nation U.S., current county and equivalent [Shapefile]. U.S. Census Bureau. <https://catalog.data.gov/dataset/tiger-line-shapefile-2019-nation-u-s-current-county-and-equivalent-national-shapefile>
Waterbodies: U.S. Census Bureau. (n.d.) Louisiana Waterbodies [Feature Layer]. https://gis.wrlf.la.gov/arcgis/rest/services/Basemaps/LA_Water/MapServer



ST TAMMANY PARISH NETWORK - SOUTHEAST

